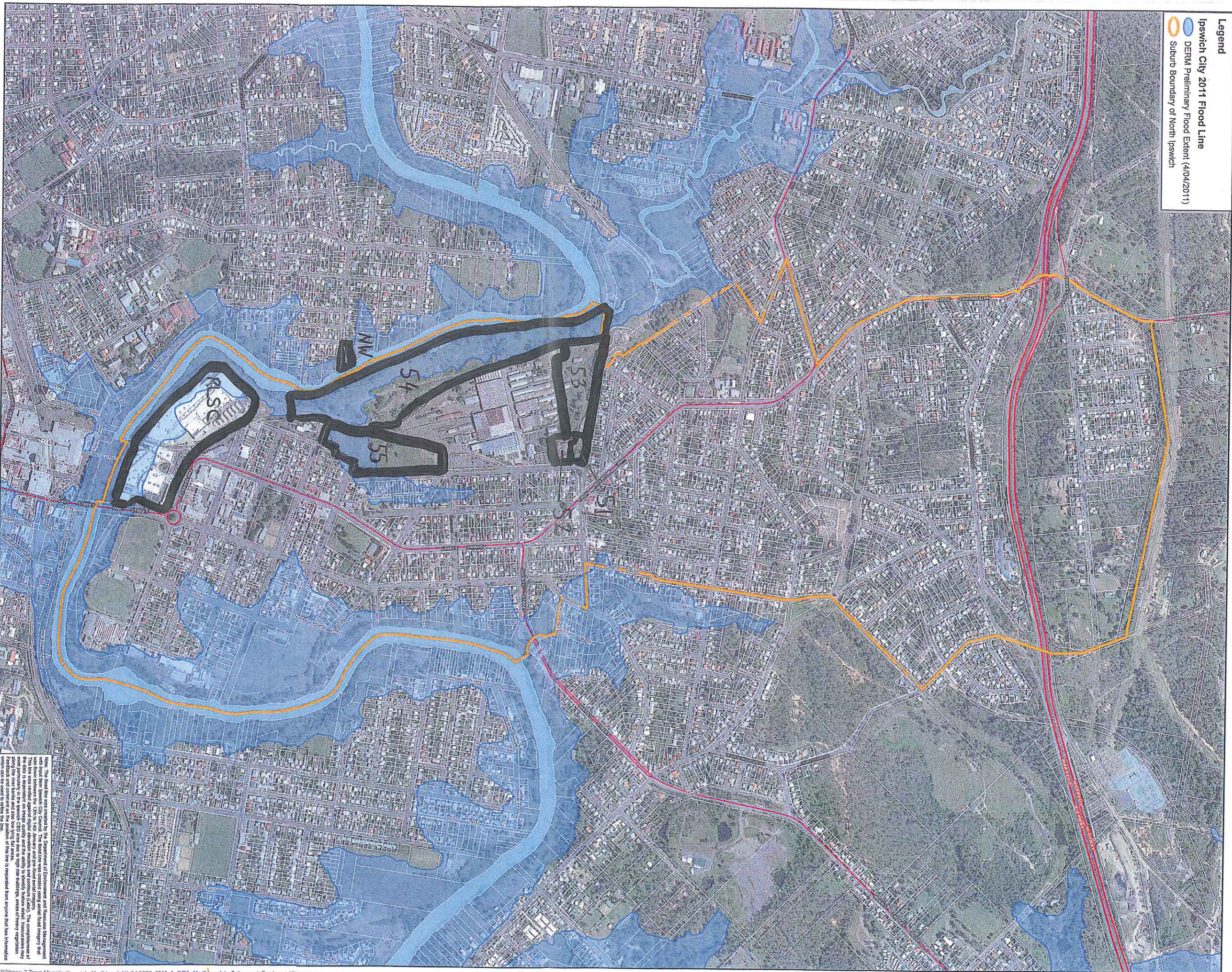


**QFCI**

Date: 28/10/11 JM

Exhibit Number: 908

**Legend**  
 Ipswich City 2011 Flood Line  
 DEMM Preliminary Flood Extent (4/04/2011)  
 Suburb Boundary of North Ipswich



**MAP INFORMATION**

**Imagery:** Flying date of aerial photography: April 2008  
 File Name: Ipswich\_Ortho.tif  
 File Sample Size: 0.5 metre

**Coordinates:** Shown as white lines  
 Digital Camera Database (DCDB) is correct at May 2011.  
 Positional accuracy representing the maximum error has been calculated at ± 0.5 metres.

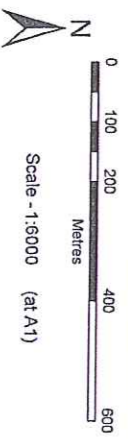
**Local Authority:** Ipswich City Council

**Location:** North Ipswich

**Datum:** Australian Geometric Datum of Australia 1984 (GDA84)

**Projection:** Horizontal - Map Grid of Australia (MGA), which is a Web Mercator projection system (GCS 1981)

**Projection:** Horizontal - Map Grid of Australia (MGA), which is a projection in Zone 56 with Central Meridian 153° East



While every care is taken to ensure the accuracy of this data, the Department of Environment and Heritage reserves the right to make no representation or warranties about its accuracy, reliability, completeness or fitness for any particular purpose and disclaims all responsibility and all liability for any loss or damage, including indirect or consequential damage, and costs which might be incurred as a result of the data being inaccurate or incomplete in any way or for any reason.

© The State of Queensland 2011

Note: This flood line was created by the Department of Environment and Heritage in consultation with Ipswich City Council. The flood line was created using aerial flood imagery that was taken between the 12th to 14th January and the exact result may vary. The completeness of the data is dependent on image quality and the ability to identify features such as structures and vegetation. Feedback and comment on the position of this line is requested from anyone that has information which can be used to refine the line.

**Queensland Reconstruction Authority**  
 1800 110 841  
 www.qldreconstruction.org.au

**SUBURB OF NORTH IPSWICH**  
 Population - 4273  
 (Australian Bureau of Statistics 2006)

**DISASTER AFFECTED PROPERTIES**

**DRAWING NUMBER**  
 LGA3960-0012-1

**DATE:**  
 MAY 2011