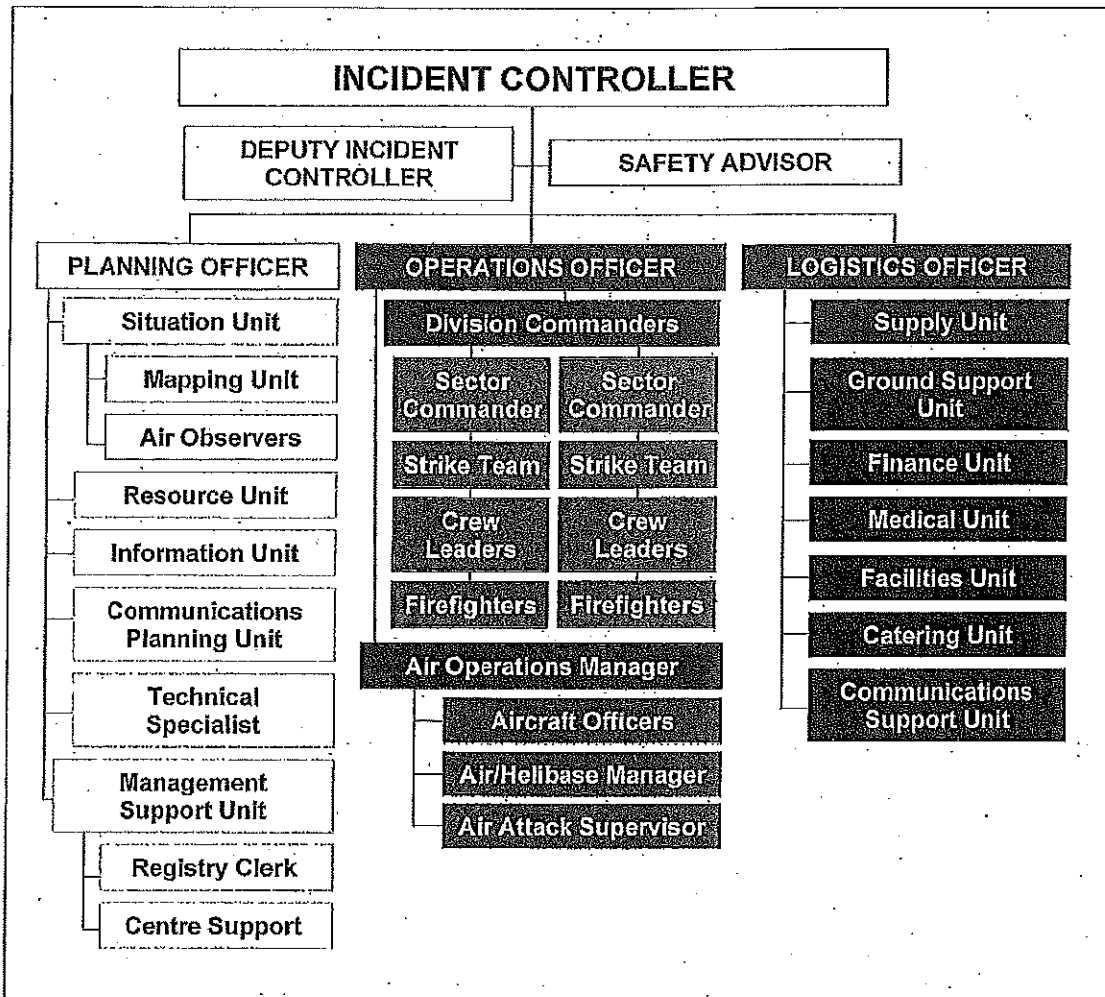


The diagram below illustrates the potential structure with the majority of roles delegated to personnel however the Operations area may be larger than indicated with the possibility of each division having five sectors assigned with each of those sectors have five strike teams or task force which in turn have five individual units per strike team or task force.



**QFRS Operations Doctrine has structure examples relevant to levels of incident classification in:**

***IMS 3.1 Level One Incident Classification***

***IMS 3.2 Level Two Incident Classification***

***IMS 3.2 Level Three Incident Classification***