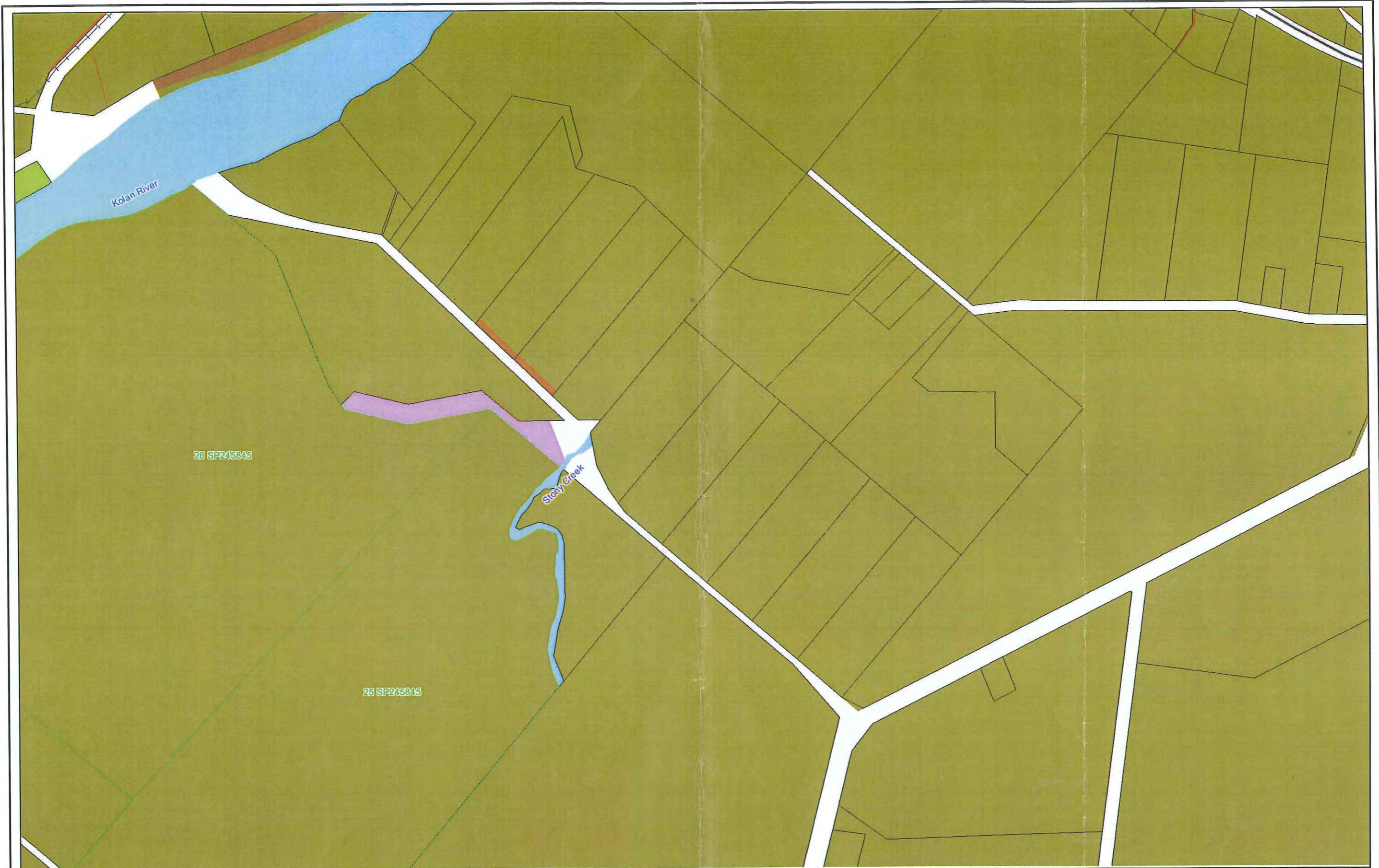


QFCI

Date: 10/10/11 Jm

Exhibit Number: 756



© The State of Queensland (Department of Environment and Resource Management) 2011. Based on Cadastral Data provided with the permission of the Department of Environment and Resource Management 2011. The information contained within this document is given without acceptance of responsibility for its accuracy. The Bundaberg Regional Council (and its officers, servants and agents), contract and agree to supply information only on that basis 2011.

While every care is taken to ensure the accuracy of this data, the Department of Environment and Resource Management and Bundaberg Regional Council makes no representation or warranties about its accuracy, reliability, completeness or stability for any particular purpose and disclaims all responsibility and all liability (including without limitation, liability in negligence) for all expenses, losses, damages (including indirect or consequential damage) and costs which you might incur as a result of the data being inaccurate or incomplete in any way and for any reason.

Smiths C



Road - Zoning (Rural)

Scale = 1:10,599
on A3 Sheet

Printed by: valeria Oct 10, 2011 8:29:20 AM

Underwood