

**QFCI**




Date:

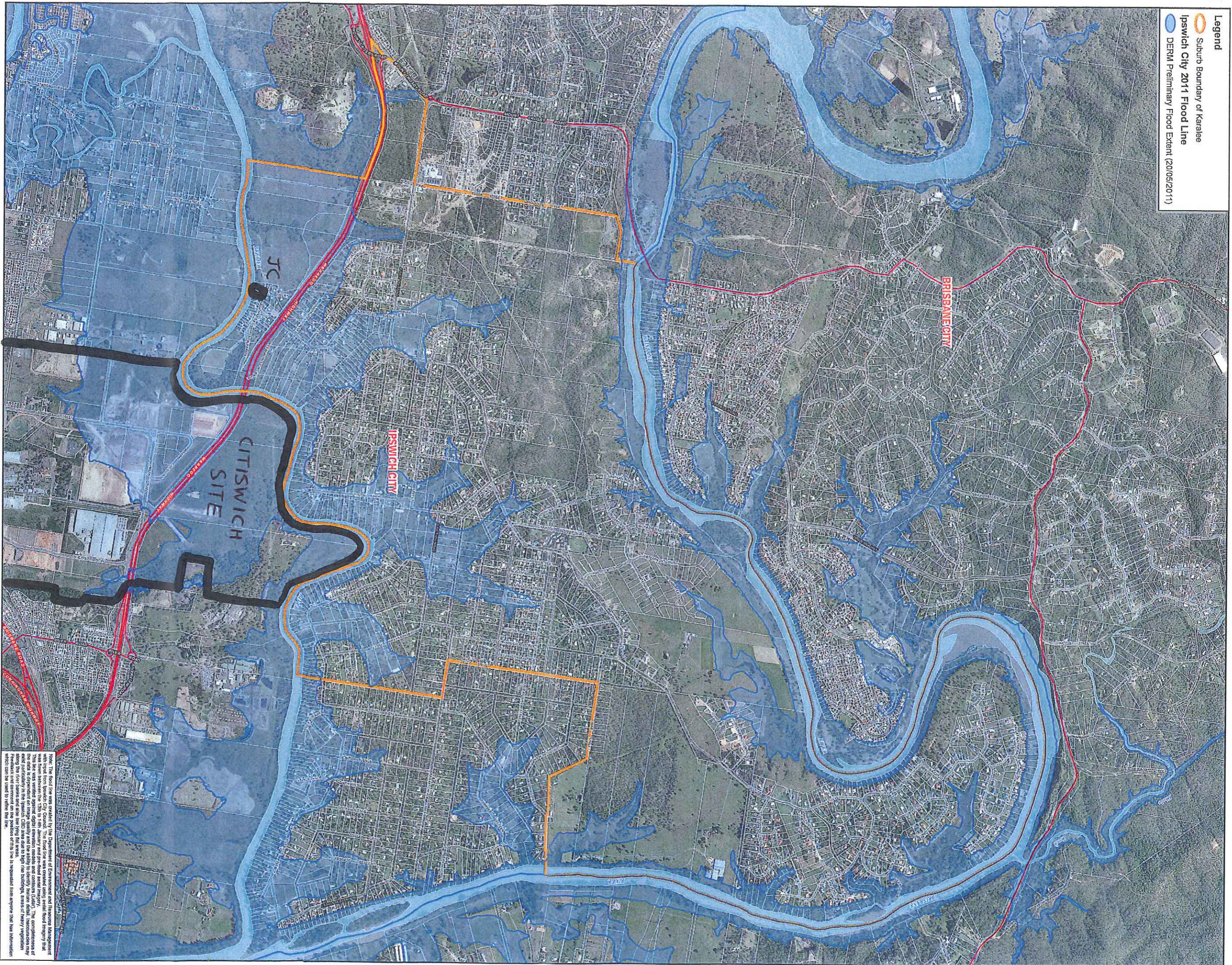
18 | 10 | 11

JM

Exhibit Number:

844

- Legend**
-  Suburb Boundary of Karalee
  -  Ipswich City 2011 Flood Line
  -  DERM Preliminary Flood Extent (20/05/2011)



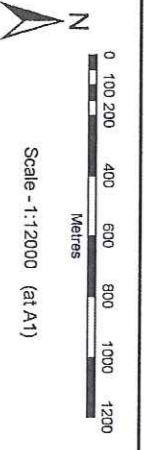
Note: The flood line was created by the Department of Environment and Resource Management with input from Ipswich City Council. The flood line was created using aerial flood imagery that has been verified against digital elevation models and contours (LiDAR). The completeness of this data is dependent on image quality and the ability to identify feature detail. Inaccuracies may occur due to the resolution of the data and the ability to identify feature detail. Heavy vegetation along the river banks and low lying flat areas may not be accurately represented. Feedback and comment on the position of this line is requested from anyone that has information which can be used to refine the line.

Queensland Reconstruction Authority  
1800 110 841  
www.qldreconstruction.org.au



**MAP INFORMATION**

Imagery: Flying date of aerial photography: April 2009  
 Projection: STEREO RADIAL  
 Datum: GDA94  
 Scale: 1:12000  
 Projection: UTM  
 Zone: 58  
 Datum: GDA94  
 Horizontal Accuracy: ± 0.5 metres  
 Vertical Accuracy: ± 0.5 metres  
 Horizontal - Map Grid of Australia (MGA94), which is a projection in Zone 58 with Central Meridian 153 East.



While every care is taken to ensure the accuracy of this data, the Department of Environment and Resource Management does not accept any liability for any particular purpose and does not accept any liability for any damage (including indirect or consequential damage) and costs which may be incurred as a result of the data being inaccurate or incomplete in any way or for any reason.

© The State of Queensland 2011

|  |                                     |
|--|-------------------------------------|
| <b>SUBURB OF KARALEE</b><br>Population - 3170<br>(Australian Bureau of<br>Statistics 2006) | <b>DRAWING<br/>         NUMBER</b>  |
|  | <b>LGA3960-<br/>         0015-2</b> |
| <b>DISASTER AFFECTED<br/>         PROPERTIES</b>   | <b>DATE:<br/>         MAY 2011</b>  |