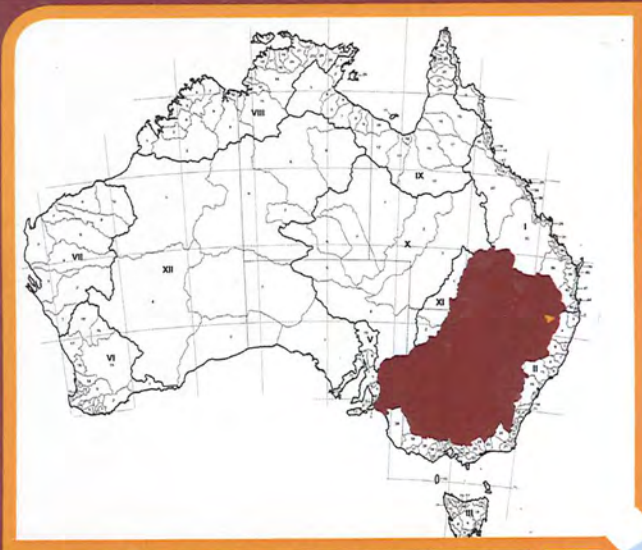


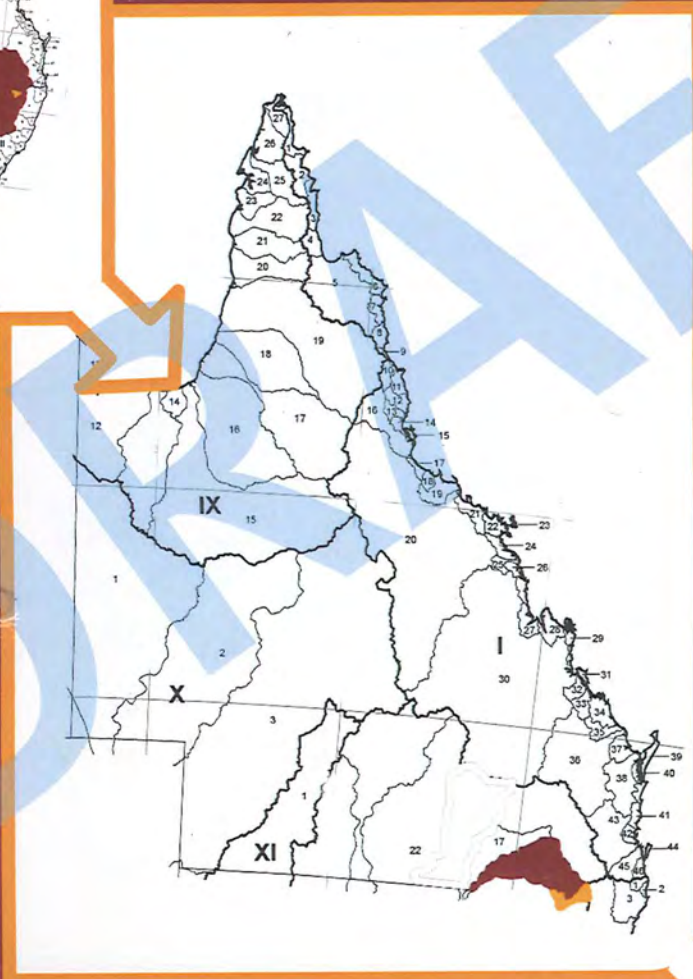


# Interim Floodplain Assessment Overlay Maps

## Dumaresq River Sub-Basin



Murray Darling Drainage Division



Border Rivers Basin

Applicable to the following LGAs:

- Goondiwindi Regional
- Southern Downs Regional



Dumaresq River Sub-Basin

QFCI Date: 8/11/11 Jm

Exhibit Number: 928

August 2011



## INTERIM FLOODPLAIN ASSESSMENT OVERLAY



The Queensland Reconstruction Authority has developed a toolkit entitled Planning for stronger, more resilient floodplains. The toolkit is provided to Local Government Authorities (LGAs) to support greater resilience and understanding of floodplains and to better inform and influence the land use planning process. Part 1 - *Interim measures to support floodplain management in existing planning schemes* delivers a toolkit that includes interim planning scheme measures and Mapbooks such as these which identify an Interim Floodplain Assessment Overlay.

### Product Overview

The spatial dataset(s) have been developed using the best available information which delineates the floodplain area appropriate to allow consideration by Council of flooding issues. The dataset was developed using the following principles:

- suitability for a state wide approach
- a consistent approach
- repeatable if more accurate data is available in the future
- evidential and justifiable

The Interim Floodplain Assessment Overlay was derived from overlaying available state-wide information sources, including:

- The best available statewide drainage location information (typically 1:100,000 or 1:250,000)<sup>1</sup>
- A standard drainage classification system to determine similar orders of importance
- The best available statewide contour information (typically 10 metre contours)<sup>2</sup>
- The best available statewide satellite imagery (typically Landsat 5)

Where other datasets exist and can aid the visual interpretation, the following were also used:

- Datasets that provide evidence of historical flooding, specifically interpreted or actual flood information from 2010/2011 events
- DERM gauging station information <http://watermonitoring.derm.qld.gov.au/host.htm>
- A dataset that combines Pre-clear Vegetation Mapping of Landzone 3 (Alluvium), Landzone 1 (Estuarine) and SALI Soil Flooding Limitation Mapping

The Department of Environment and Resource Management will provide this product to LGAs and make available (subject to any licensing conditions under which the department acquired the data) the datasets used in the interpretation to assist LGAs.

The product can be used to identify individual properties or parts of properties located within an Interim Floodplain Assessment Overlay area.

For further information on the specific datasets used please contact [productdelivery@derm.qld.gov.au](mailto:productdelivery@derm.qld.gov.au).

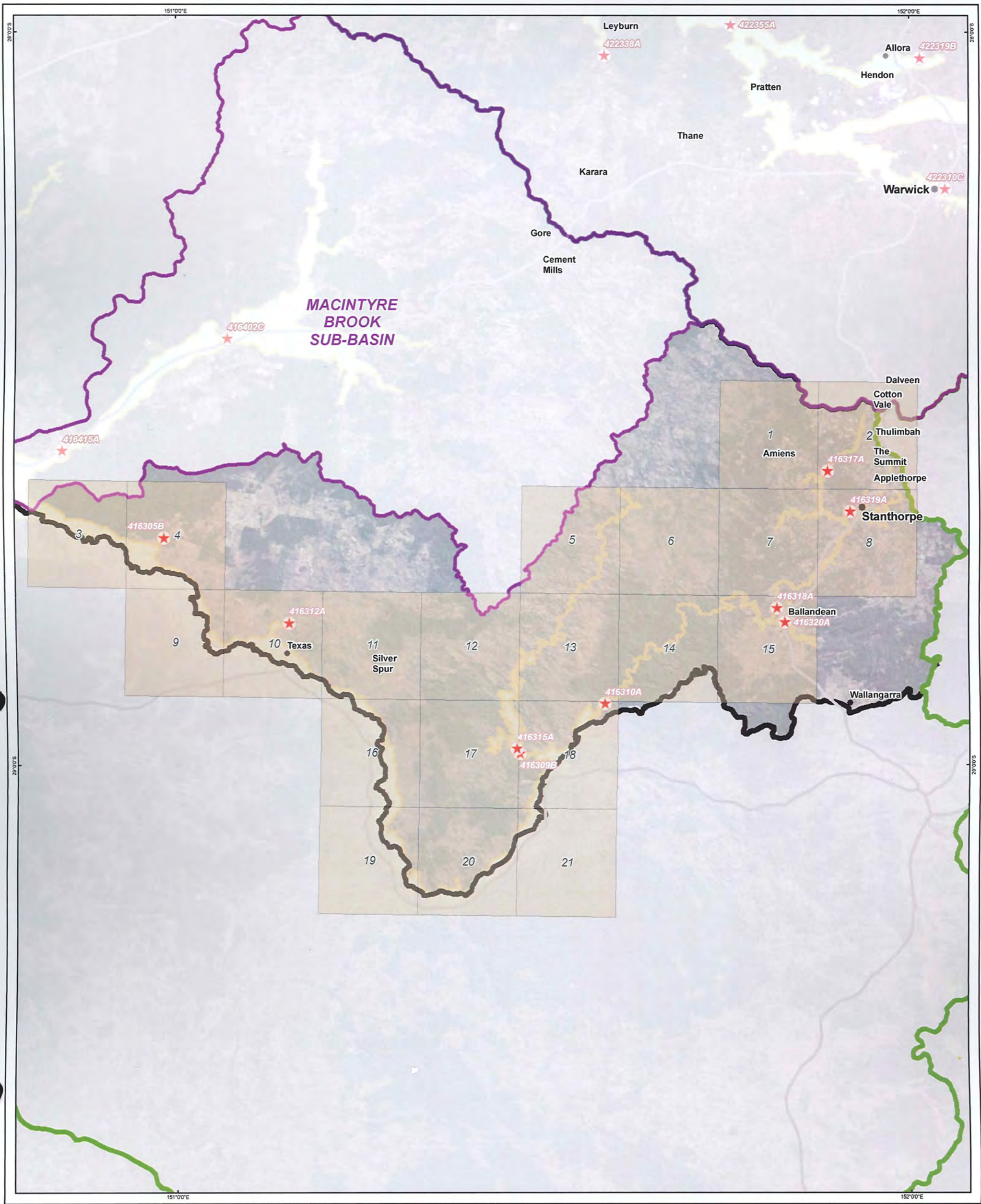
[1] Positional accuracy of this data is typically 1mm at map scale (eg 100m +/- at 1:100,000 scale)

[2] Horizontal contour accuracy is typically +/- half a contour interval (relevant to gradient at any given location)

© State of Queensland 2011

*Disclaimer: The State of Queensland makes no representations and gives no guarantees or warranties regarding the accuracy, reliability completeness, currency or suitability for any particular purpose of the Information Products. To the extent permitted by law, all warranties relating to accuracy, reliability, completeness, currency or suitability for any particular purpose and all liability for loss, cost, expense, damage and liability of any kind (including consequential damage) incurred in any way (including but not limited to that arising from negligence) in connection with any use of or reliance on the Information Products are excluded or limited. By using or relying on any of the Information Products you agree to continually indemnify the State of Queensland (and their officers and employees against any loss, cost, expense, damage and liability of any kind (including consequential damage and liability in negligence)) arising directly or indirectly from or related to your use of the Information Product or the use of the Information Products by anyone who has obtained the Information Products through you. An Information Product means a product supplied by the Queensland Reconstruction Authority and includes all information and material whether made available in hardcopy or online.*





**INTERIM FLOODPLAIN ASSESSMENT OVERLAY  
DUMARESQ RIVER SUB-BASIN  
KEYMAP  
2011 V1.0**

0 1 2 3 4 5 10 15 20 25  
Kilometres

**SCALE 1:550000**  
Original Size is A3

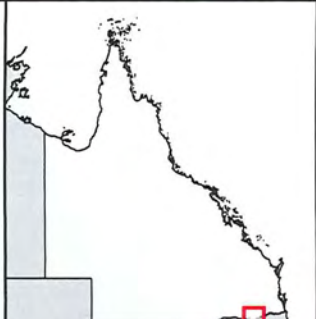
© The State of Queensland (Department of Environment and Resource Management) 2011. Imagery © ESRI 2009.  
Produced for the Queensland Reconstruction Authority by the Department of Environment and Resource Management, August 2011.

**LEGEND**

	MapGrid
	Interim Floodplain Assessment Overlay
	Highways
	Unsealed Highways
	Drainage Sub-Basins Mask
	Drainage Divisions
	Drainage Basins
	Gauging Station

**MAP INFORMATION**

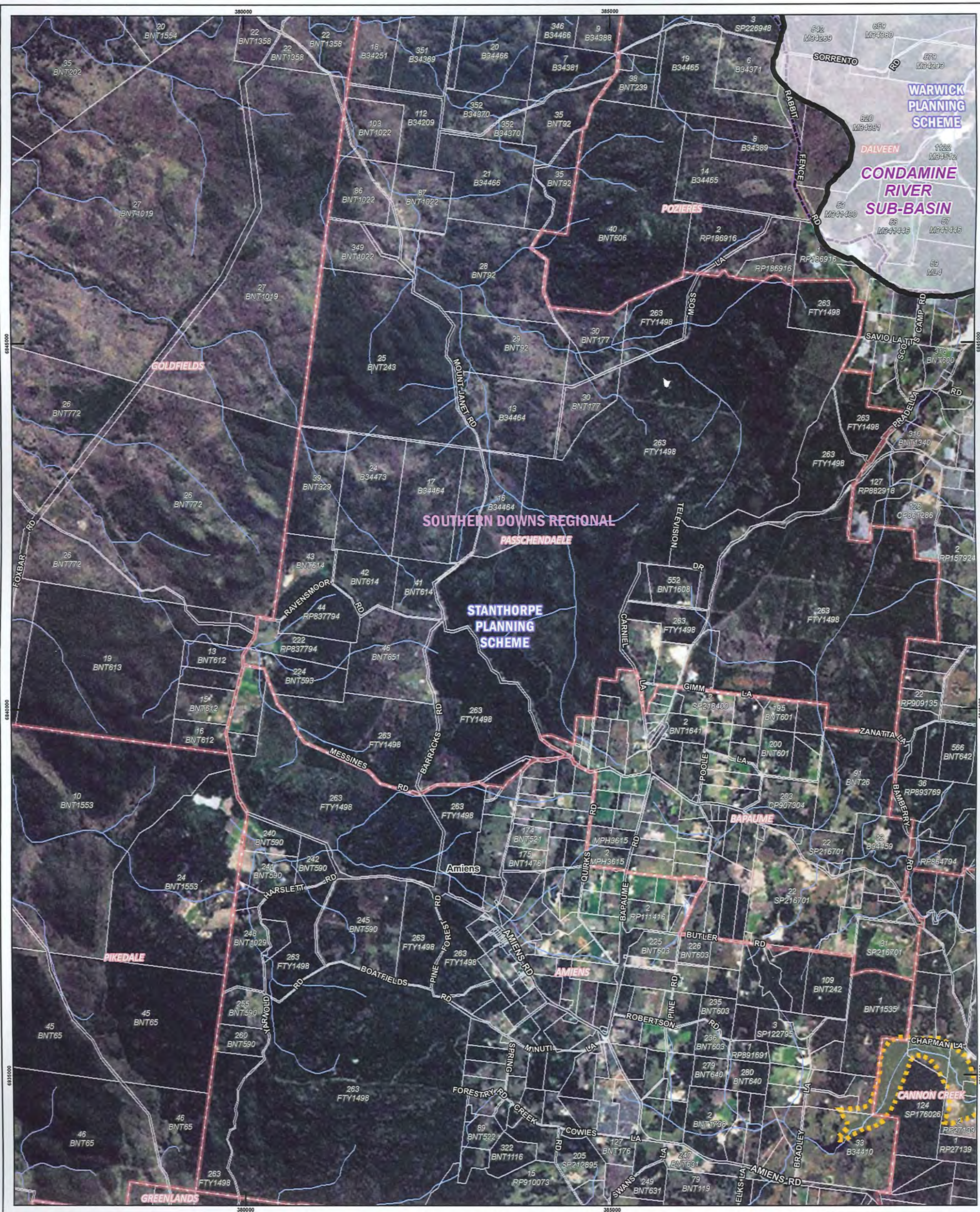
Imagery:	ESRI ArcGIS Online Imagery Basemap
Cadastral:	Digital Cadastral Database (DCDB) is current at August 2011. Positional accuracy representing the 'maximum error' has been calculated at ± 57 metres.
Floodplain Assessment Overlay:	For more information regarding the capture of this line please see the Foreword at the front of this atlas.
Drainage Sub-Basin:	Dumaresq River
Drainage Basin:	Border Rivers
Drainage Division:	Murray Darling
Datum:	Horizontal - Geocentric Datum of Australia 1994 (GDA94)
Projection:	Horizontal - Geocentric Datum of Australia 1994 (GDA94)
Graticule:	Graticule lines are at 1 degree intervals
Technical enquiries:	The Manager GIS Mapping Services (Client Outcomes), Spatial Information Group Department of Environment and Resource Management GPO Box 2454, Brisbane QLD 4001



While every care is taken to ensure the accuracy of this data, the Department of Environment and Resource Management, and/or contributors to this publication, makes no representations or warranties about its accuracy, reliability, completeness or suitability for any particular purpose and disclaims all responsibility and all liability (including without limitation, liability in negligence) for all injuries, expenses, losses, damages (including indirect or consequential damage) and costs which might be incurred as a result of the data being inaccurate or incomplete in any way or for any reason.

**Map No.:**  
**4163.K**





**INTERIM FLOODPLAIN ASSESSMENT OVERLAY  
DUMARESQ RIVER SUB-BASIN  
2011 V1.0**

0 200 400 600 800 1000 2000 3000  
Metres

**SCALE 1:50000**  
Original Size is A3

© The State of Queensland (Department of Environment and Resource Management) 2011. Imagery © ESRI 2009.  
Produced for the Queensland Reconstruction Authority by the Department of Environment and Resource Management, August 2011.

**LEGEND**

- Interim Floodplain Assessment Overlay
- Cadastre
- Planning Scheme Boundaries
- Locality Boundaries
- Current Local Government Boundaries
- Watercourses
- Drainage Divisions
- Drainage Basins
- Gauging Station

**MAP INFORMATION**

Imagery: ESRI ArcGIS Online Imagery Basemap  
 Cadastre: Digital Cadastral Database (DCDB) is current as August 2011. Positional accuracy representing the 'maximum error' has been calculated at a 57 metres.  
 Floodplain Assessment Overlay: For more information regarding the capture of this line please see the Foreword at the front of this atlas.  
 Watercourses: The average accuracy of the data is plus or minus 25 metres in the horizontal position  
 Drainage Sub-Basin: Dumaresq River  
 Drainage Basin: Border Rivers  
 Drainage Division: Murray-Darling  
 Datum: Horizontal - Geocentric Datum of Australia 1994 (GDA94)  
 Projection: Horizontal - Map Grid of Australia (MGA94), which is a standard Universal Transverse Mercator (UTM) projection in Zone 56 with Central Meridian 153° East  
 Grid: Grid lines are at 5 kilometre intervals

Technical enquiries:  
 The Manager  
 GIS Mapping Services (Client Outcomes), Spatial Information Group  
 Department of Environment and Resource Management  
 GPO Box 2454, Brisbane QLD 4001

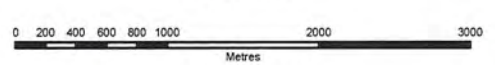
While every care is taken to ensure the accuracy of this data, the Department of Environment and Resource Management, and/or contributors to this publication, makes no representations or warranties about its accuracy, reliability, completeness or suitability for any particular purpose and disclaims all responsibility and all liability (including without limitation, liability in negligence) for all injuries, expenses, losses, damages (including indirect or consequential damage) and costs which may be incurred as a result of the data being inaccurate or incomplete in any way or for any reason.

Map No.:  
**4163.1**





**INTERIM FLOODPLAIN ASSESSMENT OVERLAY  
DUMARESQ RIVER SUB-BASIN  
2011 V1.0**



SCALE 1:50000  
Original Size is A3

© The State of Queensland (Department of Environment and Resource Management) 2011. Imagery © ESRI 2009.  
Produced for the Queensland Reconstruction Authority by the Department of Environment and Resource Management, August 2011.

LEGEND	
	Interim Floodplain Assessment Overlay
	Cadastre
	Planning Scheme Boundaries
	Locality Boundaries
	Current Local Government Boundaries
	Watercourses
	Drainage Divisions
	Drainage Basins
	Gauging Station

MAP INFORMATION	
Imagery:	ESRI ArcGIS Online Imagery Basemap
Cadastre:	Digital Cadastral Database (DCDB) is current as August 2011. Positional accuracy representing the maximum error has been calculated at a 57 metres.
Floodplain Assessment Overlay:	For more information regarding the capture of this line please see the Foreword at the front of this atlas.
Watercourses:	The average accuracy of the data is plus or minus 25 metres in the horizontal position
Drainage Sub-Basin:	Dumaresq River
Drainage Basin:	Border Rivers
Drainage Division:	Murray-Darling
Datum:	Horizontal - Geocentric Datum of Australia 1994 (GDA94)
Projection:	Horizontal - Map Grid of Australia (MGA94), which is a standard Universal Transverse Mercator (UTM) projection in Zone 56 with Central Meridian 153° East
Grid:	Grid lines are at 5 kilometre intervals
Technical enquiries:	The Manager GIS Mapping Services (Client Outcomes), Spatial Information Group Department of Environment and Resource Management GPO Box 264, Brisbane QLD 4001



Map No.:  
**4163.2**

While every care is taken to ensure the accuracy of this data, the Department of Environment and Resource Management, and/or contributors to this publication, makes no representations or warranties about its accuracy, reliability, completeness or suitability for any particular purpose and disclaims all responsibility and liability (including without limitation, liability in negligence) for all injuries, expenses, losses, damages (including indirect or consequential damage) and costs which might be incurred as a result of the data being inaccurate or incomplete in any way or for any reason.





**INTERIM FLOODPLAIN ASSESSMENT OVERLAY  
DUMARESQ RIVER SUB-BASIN  
2011 V1.0**



SCALE 1:50000  
Original Size is A3

© The State of Queensland (Department of Environment and Resource Management) 2011. Imagery © ESRI 2009.  
Produced for the Queensland Reconstruction Authority by the Department of Environment and Resource Management, August 2011.

- LEGEND**
- Interim Floodplain Assessment Overlay
  - Cadastre
  - Planning Scheme Boundaries
  - Locality Boundaries
  - Current Local Government Boundaries
  - Watercourses
  - Drainage Divisions
  - Drainage Basins
  - Gauging Station

**MAP INFORMATION**

Imagery: ESRI ArcGIS Online Imagery Basemap  
 Cadastre: Digital Cadastral Database (DCDB) is current as at August 2011. Positional accuracy representing the 'maximum error' has been calculated at a 57 metres.  
 Floodplain Assessment Overlay: For more information regarding the capture of this line please see the Foreword at the front of this atlas.  
 Watercourses: The average accuracy of the data is plus or minus 25 metres in the horizontal position.  
 Drainage Sub-Basin: Dumaresq River  
 Drainage Basin: Border Rivers  
 Drainage Division: Murray-Darling  
 Datum: Horizontal - Geocentric Datum of Australia 1994 (GDA94)  
 Projection: Horizontal - Map Grid of Australia (MGA94), which is a standard Universal Transverse Mercator (UTM) projection in Zone 56 with Central Meridian 153° East  
 Grid: Grid lines are at 5 kilometre intervals

Technical enquiries:  
 The Manager  
 GIS Mapping Services (Client Outcomes), Spatial Information Group  
 Department of Environment and Resource Management  
 GPO Box 2454, Brisbane QLD 4001



Map No.:  
**4163.3**

While every care is taken to ensure the accuracy of this data, the Department of Environment and Resource Management, and/or contributors to this publication, makes no representations or warranties about its accuracy, reliability, completeness or suitability for any particular purpose and disclaims all responsibility and all liability (including without limitation, liability in negligence) for all injuries, expenses, losses, damages (including indirect or consequential damage) and costs which might be incurred as a result of the data being inaccurate or incomplete in any way or for any reason.





**INTERIM FLOODPLAIN ASSESSMENT OVERLAY  
DUMARESQ RIVER SUB-BASIN  
2011 V1.0**

0 200 400 600 800 1000 2000 3000  
Metres

**SCALE 1:50000**  
Original Size is A3

© The State of Queensland (Department of Environment and Resource Management) 2011. Imagery © ESRI 2009.  
Produced for the Queensland Reconstruction Authority by the Department of Environment and Resource Management, August 2011.

- LEGEND**
- Interim Floodplain Assessment Overlay
  - Cadastre
  - Planning Scheme Boundaries
  - Locality Boundaries
  - Current Local Government Boundaries
  - Watercourses
  - Drainage Divisions
  - Drainage Basins
  - Gauging Station

**MAP INFORMATION**

Imagery: ESRI ArcGIS Online Imagery Basemap

Cadastre: Digital Cadastral Database (DCDB) is current at August 2011. Positional accuracy representing the maximum error has been calculated at a 57 metres.

Floodplain Assessment Overlay: For more information regarding the capture of this line please see the Foreword at the front of this atlas.

Watercourses: The average accuracy of the data is plus or minus 25 metres in the horizontal position

Drainage Sub-Basin: Dumaresq River

Drainage Basin: Border Rivers

Drainage Division: Murray-Darling

Datum: Horizontal - Geocentric Datum of Australia 1994 (GDAG4)

Projection: Horizontal - Map Grid of Australia (MGA84), which is a standard Universal Transverse Mercator (UTM) projection in Zone 56 with Central Meridian 153° East

Grid: Grid lines are at 5 kilometre intervals

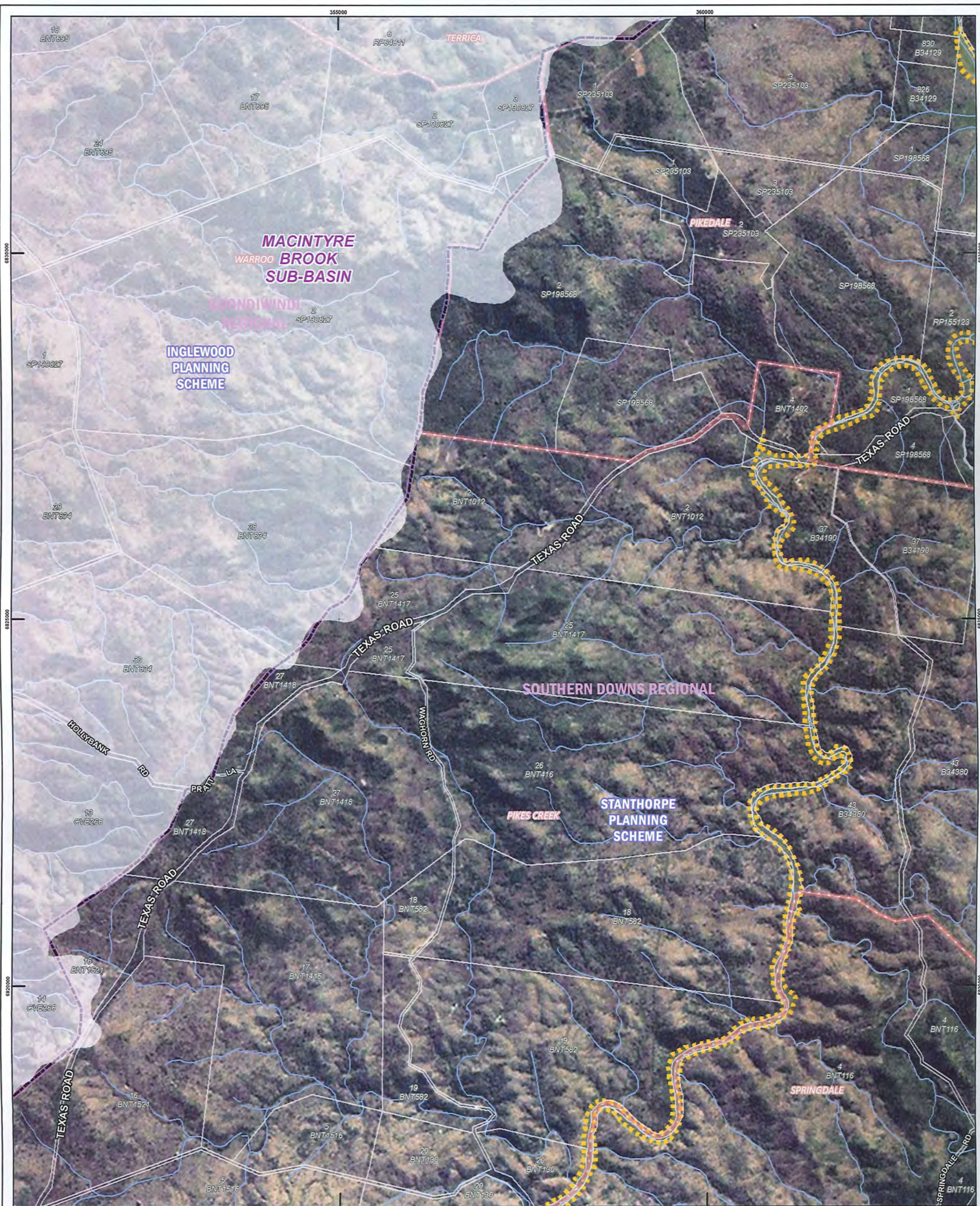
Technical enquiries:  
The Manager  
GIS Mapping Services (Client Outcomes), Spatial Information Group  
Department of Environment and Resource Management  
GPO Box 2654, Brisbane QLD 4001



While every care is taken to ensure the accuracy of this data, the Department of Environment and Resource Management, and/or contributors to this publication, makes no representations or warranties about its accuracy, reliability, completeness or suitability for any particular purpose and disclaims all responsibility and all liability (including without limitation, liability in negligence) for all injuries, expenses, losses, damages (including indirect or consequential damage) and costs which might be incurred as a result of the data being inaccurate or incomplete in any way or for any reason.

Map No.:  
**4163.4**





**INTERIM FLOODPLAIN ASSESSMENT OVERLAY  
DUMARESQ RIVER SUB-BASIN  
2011 V1.0**

0 200 400 600 800 1000 2000 3000  
Metres

**SCALE 1:50000**  
Original Size is A3

© The State of Queensland (Department of Environment and Resource Management) 2011. Imagery © ESRI 2009.  
Produced for the Queensland Reconstruction Authority by the Department of Environment and Resource Management, August 2011.

- LEGEND**
- Interim Floodplain Assessment Overlay
  - Cadastre
  - Planning Scheme Boundaries
  - Locality Boundaries
  - Current Local Government Boundaries
  - Watercourses
  - Drainage Divisions
  - Drainage Basins
  - Gauging Station

**MAP INFORMATION**

Imagery: ESRI ArcGIS Online Imagery Basemap

Cadastre: Digital Cadastral Database (DCDB) is current as August 2011. Positional accuracy representing the maximum error has been calculated at ± 57 metres.

Floodplain Assessment Overlay: For more information regarding the capture of this line please see the Foreword at the front of this atlas.

Watercourses: The average accuracy of the data is plus or minus 25 metres in the horizontal position

Drainage Sub-Basin: Dumaresq River

Drainage Basin: Border Rivers

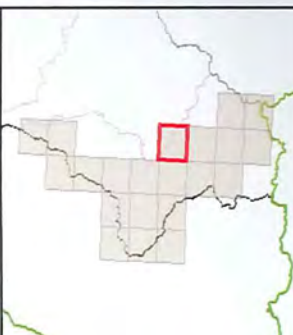
Drainage Division: Murray-Darling

Datum: Horizontal - Geocentric Datum of Australia 1994 (GDA94)

Projection: Horizontal - Map Grid of Australia (MGA94), which is a standard Universal Transverse Mercator (UTM) projection in Zone 56 with Central Meridian 153° East

Grid: Grid lines are at 5 kilometre intervals

Technical enquiries:  
The Manager  
GIS Mapping Services (Client Outcomes), Spatial Information Group  
Department of Environment and Resource Management  
GPO Box 2454, Brisbane QLD 4001



While every care is taken to ensure the accuracy of this data, the Department of Environment and Resource Management, and/or contributors to this publication, makes no representations or warranties about its accuracy, reliability, completeness or suitability for any particular purpose and disclaims all responsibility and all liability (including indirect or consequential damage) and costs which might be incurred as a result of the data being inaccurate or incomplete in any way or for any reason.

Map No.:  
**4163.5**





**INTERIM FLOODPLAIN ASSESSMENT OVERLAY  
DUMARESQ RIVER SUB-BASIN  
2011 V1.0**



SCALE 1:50000  
Original Size is A3

© The State of Queensland (Department of Environment and Resource Management) 2011. Imagery © ESRI 2009.  
Produced for the Queensland Reconstruction Authority by the Department of Environment and Resource Management, August 2011.

- LEGEND**
- Interim Floodplain Assessment Overlay
  - Cadastre
  - Planning Scheme Boundaries
  - Locality Boundaries
  - Current Local Government Boundaries
  - Watercourses
  - Drainage Divisions
  - Drainage Basins
  - Gauging Station

**MAP INFORMATION**

Imagery: ESRI ArcGIS Online Imagery Basemap  
 Cadastre: Digital Cadastral Database (DCDB) is current at August 2011. Positional accuracy representing the maximum error has been calculated at a 57 metres.  
 Floodplain Assessment Overlay: For more information regarding the capture of this line please see the Foreword at the front of this atlas.  
 Watercourses: The average accuracy of the data is plus or minus 25 metres in the horizontal position  
 Drainage Sub-Basin: Dumaresq River  
 Drainage Basin: Border Rivers  
 Drainage Division: Murray-Darling  
 Datum: Horizontal - Geocentric Datum of Australia 1994 (GDA94)  
 Projection: Horizontal - Map Grid of Australia (MGA94), which is a standard Universal Transverse Mercator (UTM) projection in Zone 56 with Central Meridian 153° East  
 Grid: Grid lines are at 5 kilometre intervals

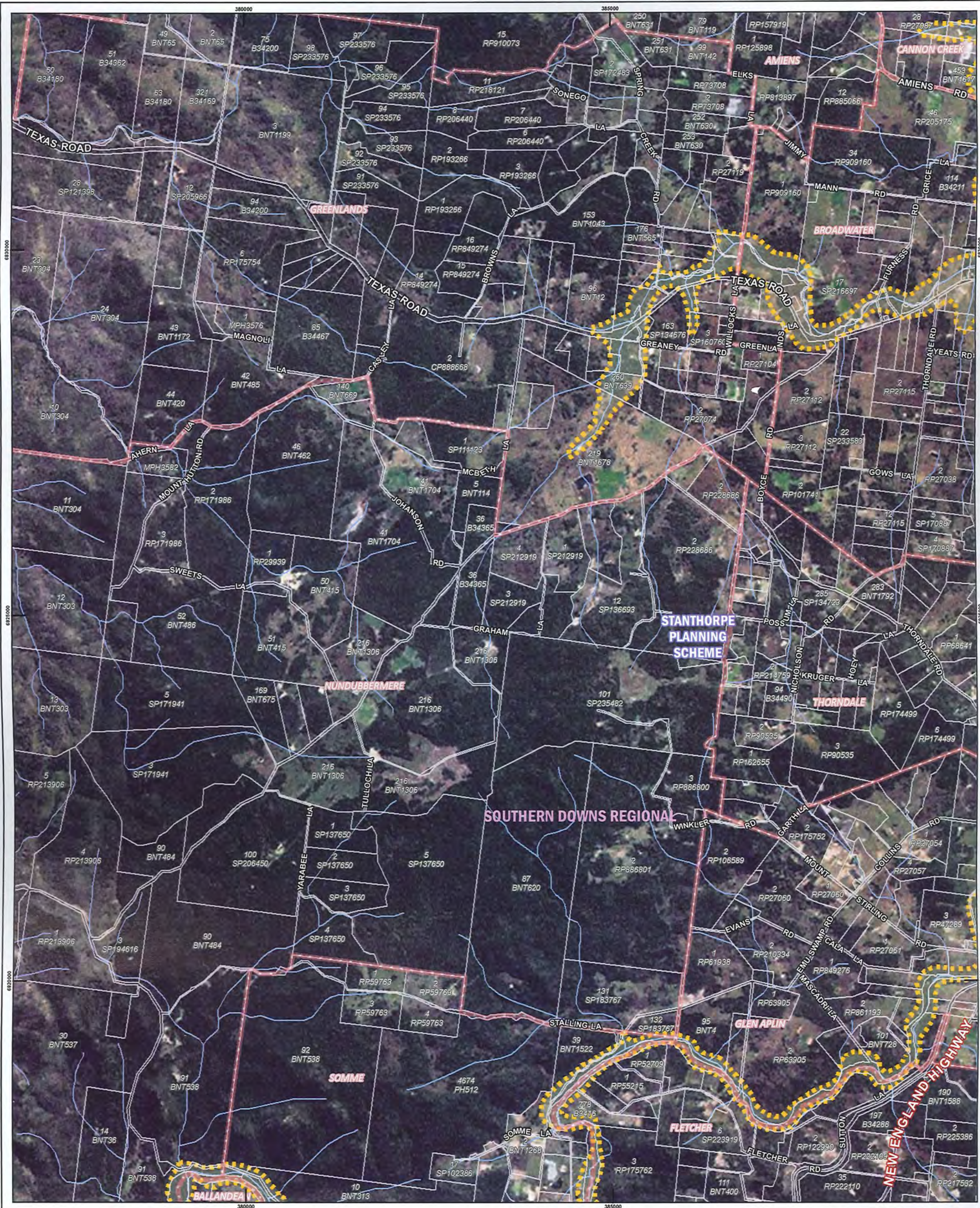
Technical enquiries:  
 The Manager  
 GIS Mapping Services (Client Outcomes), Spatial Information Group  
 Department of Environment and Resource Management  
 GPO Box 2464, Brisbane QLD 4001



While every care is taken to ensure the accuracy of this data, the Department of Environment and Resource Management, and/or contributors to this publication, makes no representations or warranties about its accuracy, reliability, completeness or suitability for any particular purpose and disclaims all responsibility and all liability (including without limitation, liability in negligence) for all injuries, expenses, losses, damages (including indirect or consequential damage) and costs which might be incurred as a result of the data being inaccurate or incomplete in any way or for any reason.

Map No.:  
**4163.6**





**INTERIM FLOODPLAIN ASSESSMENT OVERLAY  
DUMARESQ RIVER SUB-BASIN  
2011 V1.0**

0 200 400 600 800 1000 2000 3000  
Metres

**SCALE 1:50000**  
Original Size is A3

© The State of Queensland (Department of Environment and Resource Management) 2011. Imagery © ESRI 2009.  
Produced for the Queensland Reconstruction Authority by the Department of Environment and Resource Management, August 2011.

**LEGEND**

- Interim Floodplain Assessment Overlay
- Cadastral
- Planning Scheme Boundaries
- Locality Boundaries
- Current Local Government Boundaries
- Watercourses
- Drainage Divisions
- Drainage Basins
- Gauging Station

**MAP INFORMATION**

Imagery: ESRI ArcGIS Online Imagery Basemap  
 Cadastre: Digital Cadastral Database (DCDB) is current as August 2011. Positional accuracy representing the 'maximum error' has been calculated at a 57 metres.  
 Floodplain Assessment Overlay: For more information regarding the capture of this line please see the Foreword at the front of this atlas.  
 Watercourses: The average accuracy of the data is plus or minus 25 metres in the horizontal position  
 Dumaresq River  
 Border Rivers  
 Drainage Basin: Murray-Darling  
 Drainage Division: Horizontal - Geocentric Datum of Australia 1994 (GDA94)  
 Datum: Horizontal - Map Grid of Australia (MGAS4), which is a standard Universal Transverse Mercator (UTM) projection in Zone 56 with Central Meridian 153° East  
 Projection: Horizontal - Map Grid of Australia (MGAS4), which is a standard Universal Transverse Mercator (UTM) projection in Zone 56 with Central Meridian 153° East  
 Grid: Grid lines are at 5 kilometre intervals

Technical enquiries:  
 The Manager  
 GIS Mapping Services (Client Outcomes), Spatial Information Group  
 Department of Environment and Resource Management  
 GPO Box 2454, Brisbane QLD 4001

Map No.:  
**4163.7**





**INTERIM FLOODPLAIN ASSESSMENT OVERLAY  
DUMARESQ RIVER SUB-BASIN  
2011 V1.0**



SCALE 1:50000  
Original Size is A3

© The State of Queensland (Department of Environment and Resource Management) 2011. Imagery © ESRI 2009.  
Produced for the Queensland Reconstruction Authority by the Department of Environment and Resource Management, August 2011.

- LEGEND**
- Interim Floodplain Assessment Overlay
  - Cadastre
  - Planning Scheme Boundaries
  - Locality Boundaries
  - Current Local Government Boundaries
  - Watercourses
  - Drainage Divisions
  - Drainage Basins
  - Gauging Station

**MAP INFORMATION**

Imagery: ESRI ArcGIS Online Imagery Basemap  
 Cadastre: Digital Cadastral Database (DCDB) is current at August 2011. Positional accuracy representing the 'maximum error' has been calculated at a 57 metres.  
 Floodplain Assessment Overlay: For more information regarding the capture of this line please see the Foreword at the front of this atlas.  
 Watercourses: The average accuracy of the data is plus or minus 25 metres in the horizontal position  
 Drainage Sub-Basin: Dumaresq River  
 Drainage Basin: Border Rivers  
 Drainage Division: Murray-Darling  
 Datum: Horizontal - Geocentric Datum of Australia 1994 (GDA94)  
 Projection: Horizontal - Map Grid of Australia (MGA94), which is a standard Universal Transverse Mercator (UTM) projection in Zone 56 with Central Meridian 153° East  
 Grid: Grid lines are at 5 kilometre intervals

Technical enquiries:  
 The Manager  
 GIS Mapping Services (Client Outcomes), Spatial Information Group  
 Department of Environment and Resource Management  
 GPO Box 2454, Brisbane QLD 4001



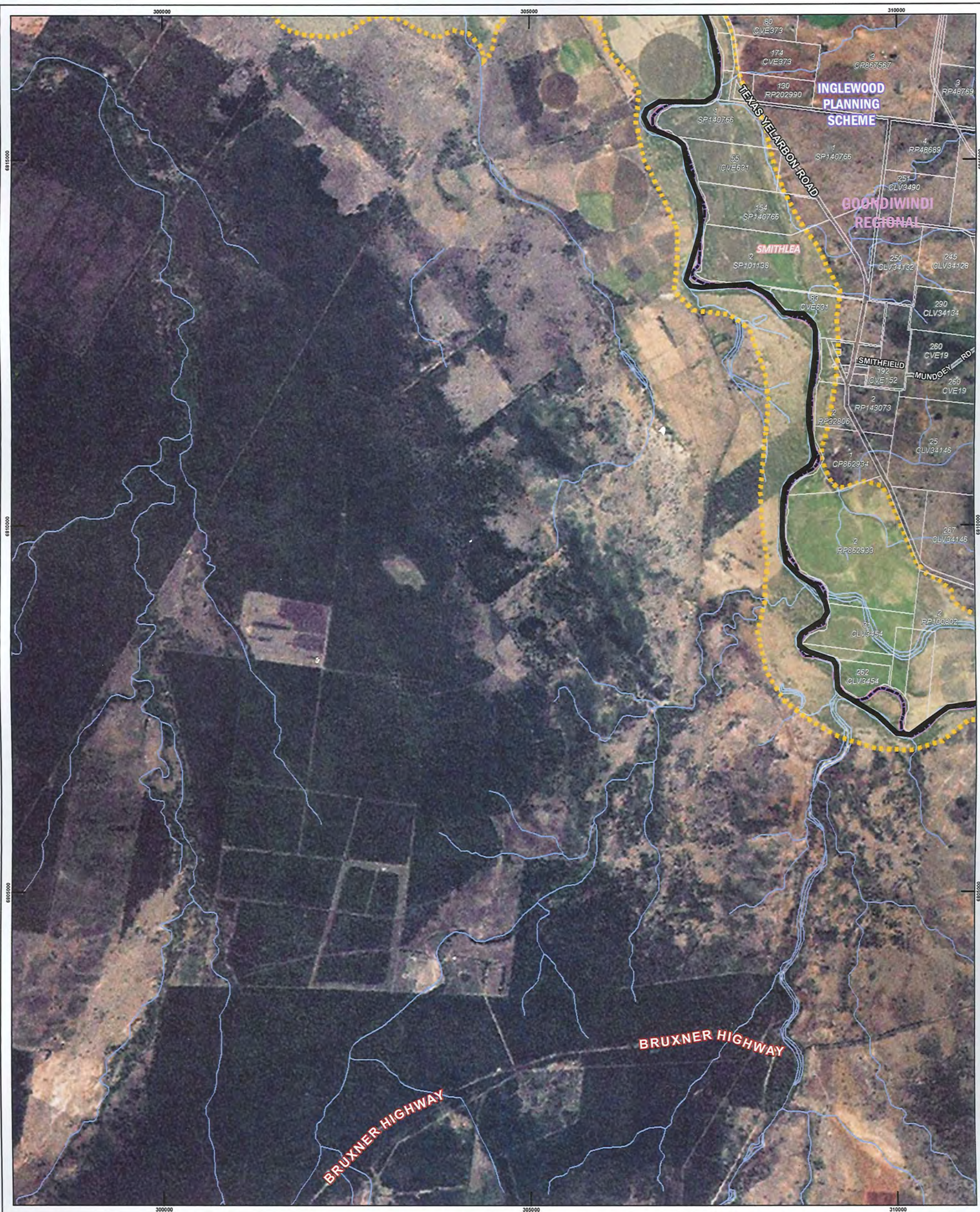
Queensland Reconstruction Authority



Map No.:  
**4163.8**

While every care is taken to ensure the accuracy of this data, the Department of Environment and Resource Management, and/or contributors to this publication, makes no representations or warranties about its accuracy, reliability, completeness or suitability for any particular purpose and disclaims all responsibility and all liability (including without limitation, liability in negligence) for all injuries, expenses, losses, damages (including indirect or consequential damage) and costs which might be incurred as a result of the data being inaccurate or incomplete in any way or for any reason.





**INTERIM FLOODPLAIN ASSESSMENT OVERLAY  
DUMARESQ RIVER SUB-BASIN  
2011 V1.0**

0 200 400 600 800 1000 2000 3000  
Metres

**SCALE 1:50000**  
Original Size is A3

© The State of Queensland (Department of Environment and Resource Management) 2011. Imagery © ESRI 2009.  
Produced for the Queensland Reconstruction Authority by the Department of Environment and Resource Management, August 2011.

**LEGEND**

- Interim Floodplain Assessment Overlay
- Cadastre
- Planning Scheme Boundaries
- Locality Boundaries
- Current Local Government Boundaries
- Watercourses
- Drainage Divisions
- Drainage Basins
- Gauging Station

**MAP INFORMATION**

Imagery: ESRI ArcGIS Online Imagery Basemap

Cadastre: Digital Cadastral Database (DCDB) is current at August 2011. Positional accuracy representing the 'maximum error' has been calculated at ± 57 metres.

Floodplain Assessment Overlay: For more information regarding the capture of this line please see the Foreword at the front of this atlas.

Watercourses: The average accuracy of the data is plus or minus 25 metres in the horizontal position

Drainage Sub-Basin: Dumaresq River

Drainage Basin: Border Rivers

Drainage Division: Murray-Darling

Datum: Horizontal - Geocentric Datum of Australia 1994 (GDA94)

Projection: Horizontal - Map Grid of Australia (MGA94), which is a standard Universal Transverse Mercator (UTM) projection in Zone 56 with Central Meridian 153° East

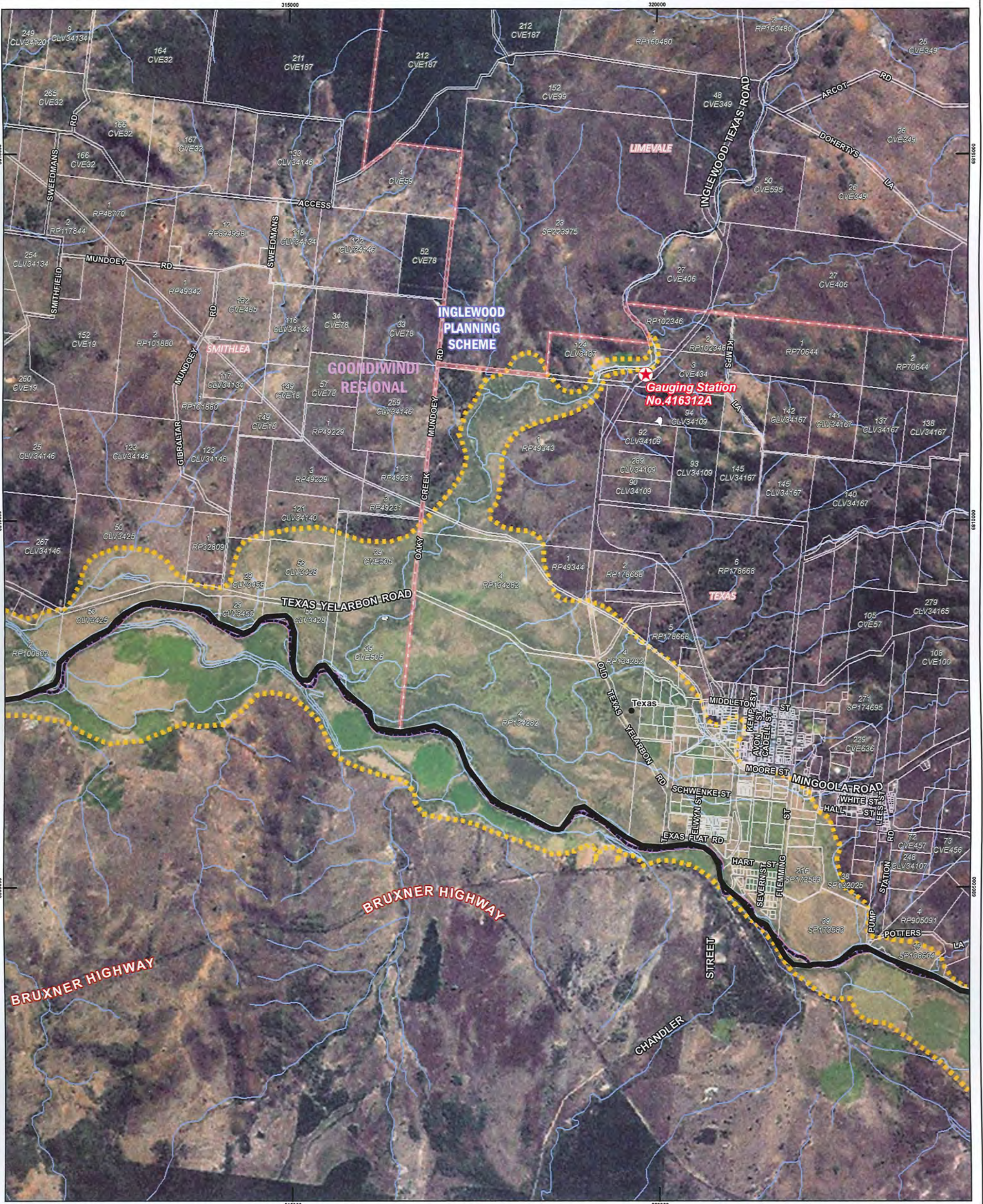
Grid: Grid lines are at 5 kilometre intervals

Technical enquiries:  
The Manager  
GIS Mapping Services (Client Outcomes), Spatial Information Group  
Department of Environment and Resource Management  
GPO Box 2454, Brisbane QLD 4001

While every care is taken to ensure the accuracy of this data, the Department of Environment and Resource Management, and/or contributors to this publication, makes no representations or warranties about its accuracy, reliability, completeness or suitability for any particular purpose and disclaims all responsibility and all liability (including without limitation, liability in negligence) for all injuries, expenses, losses, damages (including indirect or consequential damage) and costs which might be incurred as a result of the data being inaccurate or incomplete in any way or for any reason.

**Map No.:**  
**4163.9**





**INTERIM FLOODPLAIN ASSESSMENT OVERLAY  
DUMARESQ RIVER SUB-BASIN  
2011 V1.0**

0 200 400 600 800 1000 2000 3000  
Metres

**SCALE 1:50000**  
Original Size is A3

© The State of Queensland (Department of Environment and Resource Management) 2011. Imagery © ESRI 2009.  
Produced for the Queensland Reconstruction Authority by the Department of Environment and Resource Management, August 2011.

- LEGEND**
- Interim Floodplain Assessment Overlay
  - Cadastre
  - Planning Scheme Boundaries
  - Locality Boundaries
  - Current Local Government Boundaries
  - Watercourses
  - Drainage Divisions
  - Drainage Basins
  - Gauging Station

**MAP INFORMATION**

Imagery: ESRI ArcGIS Online Imagery Basemap  
 Cadastre: Digital Cadastral Database (DCDB) is current at August 2011. Positional accuracy representing the 'maximum error' has been calculated at a 57 metres.  
 Floodplain Assessment Overlay: For more information regarding the capture of this line please see the Foreword at the front of this atlas.  
 Watercourses: The average accuracy of the data is plus or minus 25 metres in the horizontal position  
 Drainage Sub-Basin: Dumaresq River  
 Drainage Basin: Border Rivers  
 Drainage Division: Murray-Darling  
 Datum: Horizontal - Geocentric Datum of Australia 1994 (GDA94)  
 Projection: Horizontal - Map Grid of Australia (MGA94), which is a standard Universal Transverse Mercator (UTM) projection in Zone 56 with Central Meridian 153° East  
 Grid: Grid lines are at 5 kilometre intervals

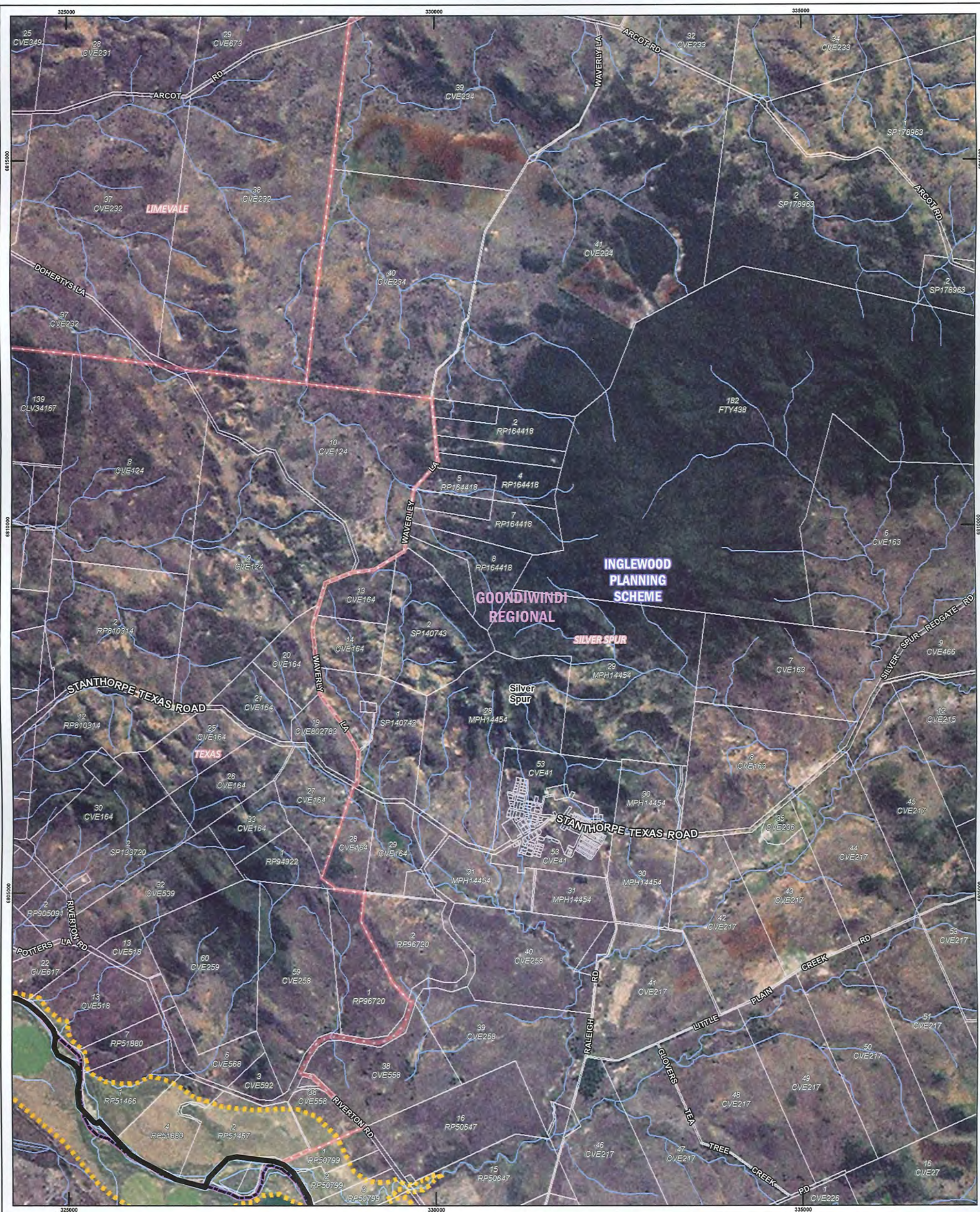
Technical enquiries:  
 The Manager  
 GIS Mapping Services (Client Outcomes), Spatial Information Group  
 Department of Environment and Resource Management  
 GPO Box 264, Brisbane QLD 4001



While every care is taken to ensure the accuracy of this data, the Department of Environment and Resource Management, and/or contributors to this publication, makes no representations or warranties about its accuracy, reliability, completeness or suitability for any particular purpose and disclaims all responsibility and liability (including without limitation, liability in negligence) for all injuries, expenses, losses, damages (including indirect or consequential damage) and costs which might be incurred as a result of the data being inaccurate or incomplete in any way or for any reason.

Map No.:  
**4163.10**





**INTERIM FLOODPLAIN ASSESSMENT OVERLAY  
DUMARESQ RIVER SUB-BASIN  
2011 V1.0**

0 200 400 600 800 1000 2000 3000  
Metres

**SCALE 1:50000**  
Original Size is A3

© The State of Queensland (Department of Environment and Resource Management) 2011. Imagery © ESRI 2009.  
Produced for the Queensland Reconstruction Authority by the Department of Environment and Resource Management, August 2011.

**LEGEND**

- Interim Floodplain Assessment Overlay
- Cadastre
- Planning Scheme Boundaries
- Locality Boundaries
- Current Local Government Boundaries
- Watercourses
- Drainage Divisions
- Drainage Basins
- Gauging Station

**MAP INFORMATION**

Imagery: ESRI ArcGIS Online Imagery Basemap  
 Cadastre: Digital Cadastral Database (DCDB) is current at August 2011. Positional accuracy representing the 'maximum error' has been calculated at ± 57 metres.  
 Floodplain Assessment Overlay: For more information regarding the capture of this line please see the Foreword at the front of this atlas.  
 Watercourses: The average accuracy of the data is plus or minus 25 metres in the horizontal position  
 Drainage Sub-Basin: Dumaresq River  
 Drainage Basin: Border Rivers  
 Drainage Division: Murray-Darling  
 Datum: Horizontal - Geocentric Datum of Australia 1994 (GDA94)  
 Projection: Horizontal - Map Grid of Australia (MGA94), which is a standard Universal Transverse Mercator (UTM) projection in Zone 56 with Central Meridian 153° East  
 Grid: Grid lines are at 5 kilometre intervals

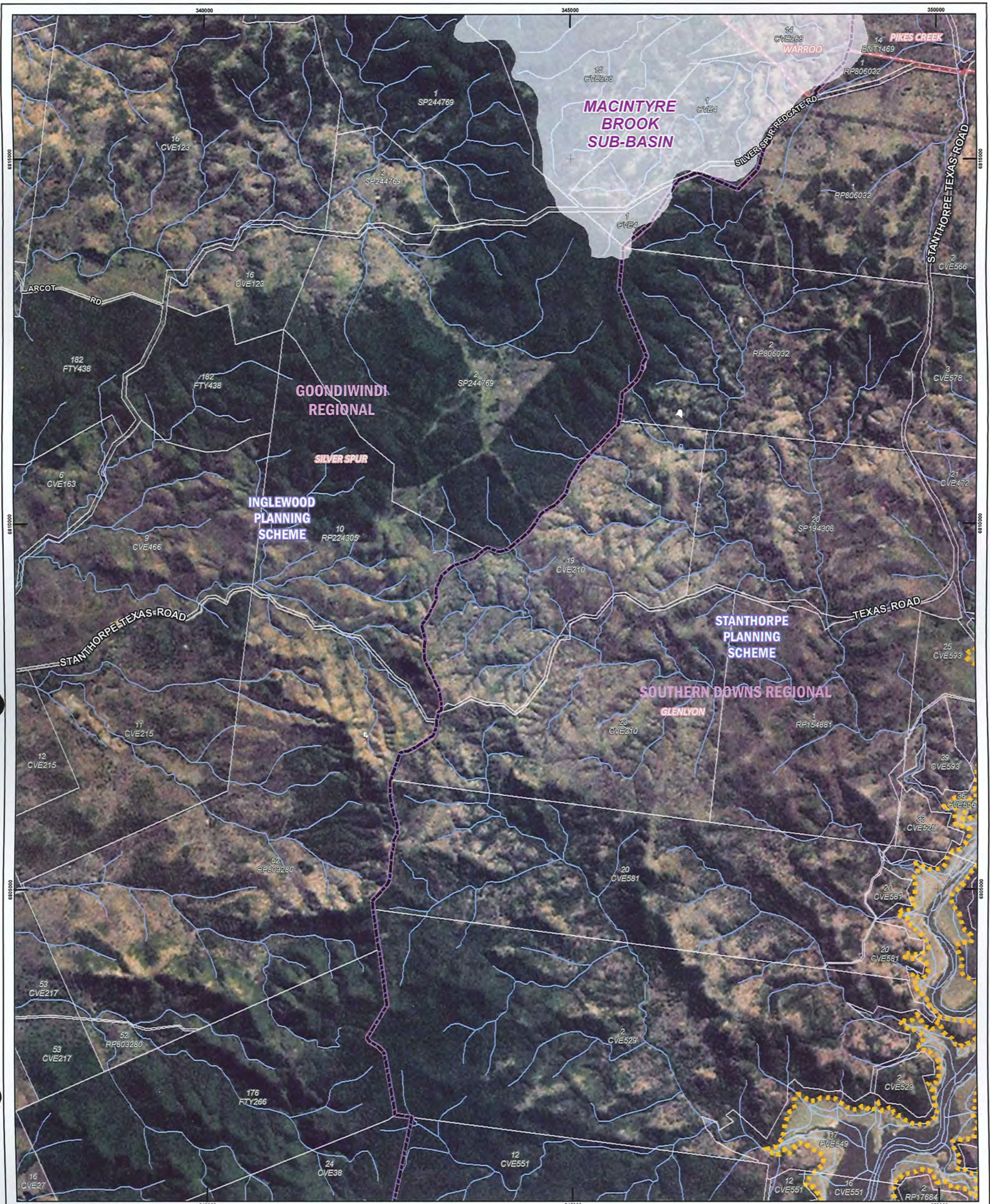
Technical enquiries:  
 The Manager  
 GIS Mapping Services (Client Outcomes), Spatial Information Group  
 Department of Environment and Resource Management  
 GPO Box 2454, Brisbane QLD 4001

While every care is taken to ensure the accuracy of this data, the Department of Environment and Resource Management, and/or contributors to this publication, makes no representations or warranties about its accuracy, reliability, completeness or suitability for any particular purpose and disclaims all responsibility and all liability (including without limitation, liability in negligence) for all injuries, expenses, losses, damages (including indirect or consequential damage) and costs which might be incurred as a result of the data being inaccurate or incomplete in any way or for any reason.

Map No.:  
**4163.11**







**INTERIM FLOODPLAIN ASSESSMENT OVERLAY  
DUMARESQ RIVER SUB-BASIN  
2011 V1.0**



SCALE 1:50000  
Original Size is A3

© The State of Queensland (Department of Environment and Resource Management) 2011. Imagery © ESRI 2009.  
Produced for the Queensland Reconstruction Authority by the Department of Environment and Resource Management, August 2011.

- LEGEND**
- Interim Floodplain Assessment Overlay
  - Cadastre
  - Planning Scheme Boundaries
  - Locality Boundaries
  - Current Local Government Boundaries
  - Watercourses
  - Drainage Divisions
  - Drainage Basins
  - Gauging Station

- MAP INFORMATION**
- Imagery: ESRI ArcGIS Online Imagery Basemap
- Cadastre: Digital Cadastral Database (DCDB) is current as August 2011. Positional accuracy representing the 'maximum error' has been calculated as a 57 metres.
- Floodplain Assessment Overlay: For more information regarding the capture of this line please see the Foreword at the front of this atlas.
- Watercourses: The average accuracy of the data is plus or minus 25 metres in the horizontal position
- Drainage Sub-Basin: Dumaresq River
- Drainage Basin: Border Rivers
- Drainage Division: Murray-Darling
- Datum: Horizontal - Geocentric Datum of Australia 1994 (GDA94)
- Projection: Horizontal - Map Grid of Australia (MGA94), which is a standard Universal Transverse Mercator (UTM) projection in Zone 56 with Central Meridian 153° East
- Grid: Grid lines are at 5 kilometre intervals
- Technical enquiries:  
The Manager  
GIS Mapping Services (Client Outcomes), Spatial Information Group  
Department of Environment and Resource Management  
GPO Box 2454, Brisbane QLD 4001



Queensland Reconstruction Authority



Map No.:  
**4163.12**

While every care is taken to ensure the accuracy of this data, the Department of Environment and Resource Management, and/or contributors to this publication, makes no representations or warranties about its accuracy, reliability, completeness or suitability for any particular purpose and disclaims all responsibility and all liability (including without limitation, liability in negligence) for all injuries, expenses, losses, damages (including indirect or consequential damage) and costs which might be incurred as a result of the data being inaccurate or incomplete in any way or for any reason.





**INTERIM FLOODPLAIN ASSESSMENT OVERLAY  
DUMARESQ RIVER SUB-BASIN  
2011 V1.0**

0 200 400 600 800 1000 2000 3000  
Metres

**SCALE 1:50000**  
Original Size is A3

© The State of Queensland (Department of Environment and Resource Management) 2011. Imagery © ESRI 2009.  
Produced for the Queensland Reconstruction Authority by the Department of Environment and Resource Management, August 2011.

**LEGEND**

- Interim Floodplain Assessment Overlay
- Cadastre
- Planning Scheme Boundaries
- Locality Boundaries
- Current Local Government Boundaries
- Watercourses
- Drainage Divisions
- Drainage Basins
- Gauging Station

**MAP INFORMATION**

Imagery: ESRI ArcGIS Online Imagery Basemap

Cadastre: Digital Cadastral Database (DCDB) is current as August 2011. Positional accuracy representing the 'maximum error' has been calculated at ± 57 metres.

Floodplain Assessment Overlay: For more information regarding the capture of this line please see the Foreword at the front of this atlas.

Watercourses: The average accuracy of the data is plus or minus 25 metres in the horizontal position

Drainage Sub-Basin: Dumaresq River

Drainage Basin: Border Rivers

Drainage Division: Murray-Darling

Datum: Horizontal - Geocentric Datum of Australia 1994 (GDA94)

Projection: Horizontal - Map Grid of Australia (MGDA), which is a standard Universal Transverse Mercator (UTM) projection in Zone 56 with Central Meridian 153° East

Grid: Grid lines are at 5 kilometre intervals

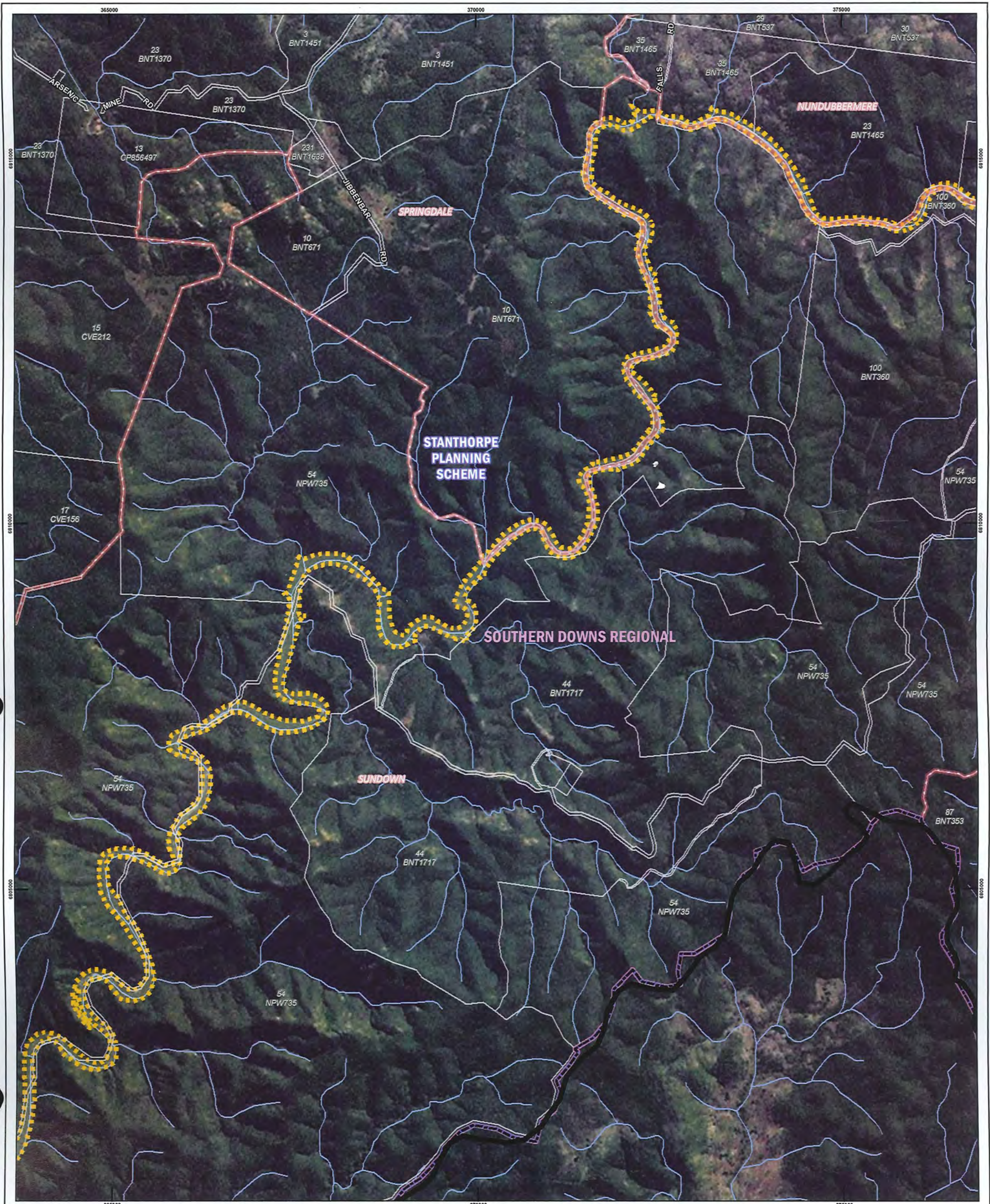
Technical enquiries:  
The Manager  
GIS Mapping Services (Client Outcomes), Spatial Information Group  
Department of Environment and Resource Management  
GPO Box 2454, Brisbane QLD 4001

While every care is taken to ensure the accuracy of this data, the Department of Environment and Resource Management, and/or contributors to this publication, makes no representations or warranties about its accuracy, reliability, completeness or suitability for any particular purpose and disclaims all responsibility and all liability (including without limitation, liability in negligence) for all injuries, expenses, losses, damages (including indirect or consequential damage) and costs which might be incurred as a result of the data being inaccurate or incomplete in any way or for any reason.

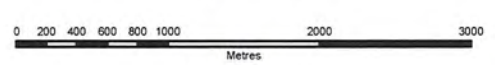
**Map No.:**  
**4163.13**







**INTERIM FLOODPLAIN ASSESSMENT OVERLAY  
DUMARESQ RIVER SUB-BASIN  
2011 V1.0**



SCALE 1:50000  
Original Size is A3

© The State of Queensland (Department of Environment and Resource Management) 2011. Imagery © ESRI 2009.  
Produced for the Queensland Reconstruction Authority by the Department of Environment and Resource Management, August 2011.

LEGEND	
	Interim Floodplain Assessment Overlay
	Cadastral
	Planning Scheme Boundaries
	Locality Boundaries
	Current Local Government Boundaries
	Watercourses
	Drainage Divisions
	Drainage Basins
	Gauging Station

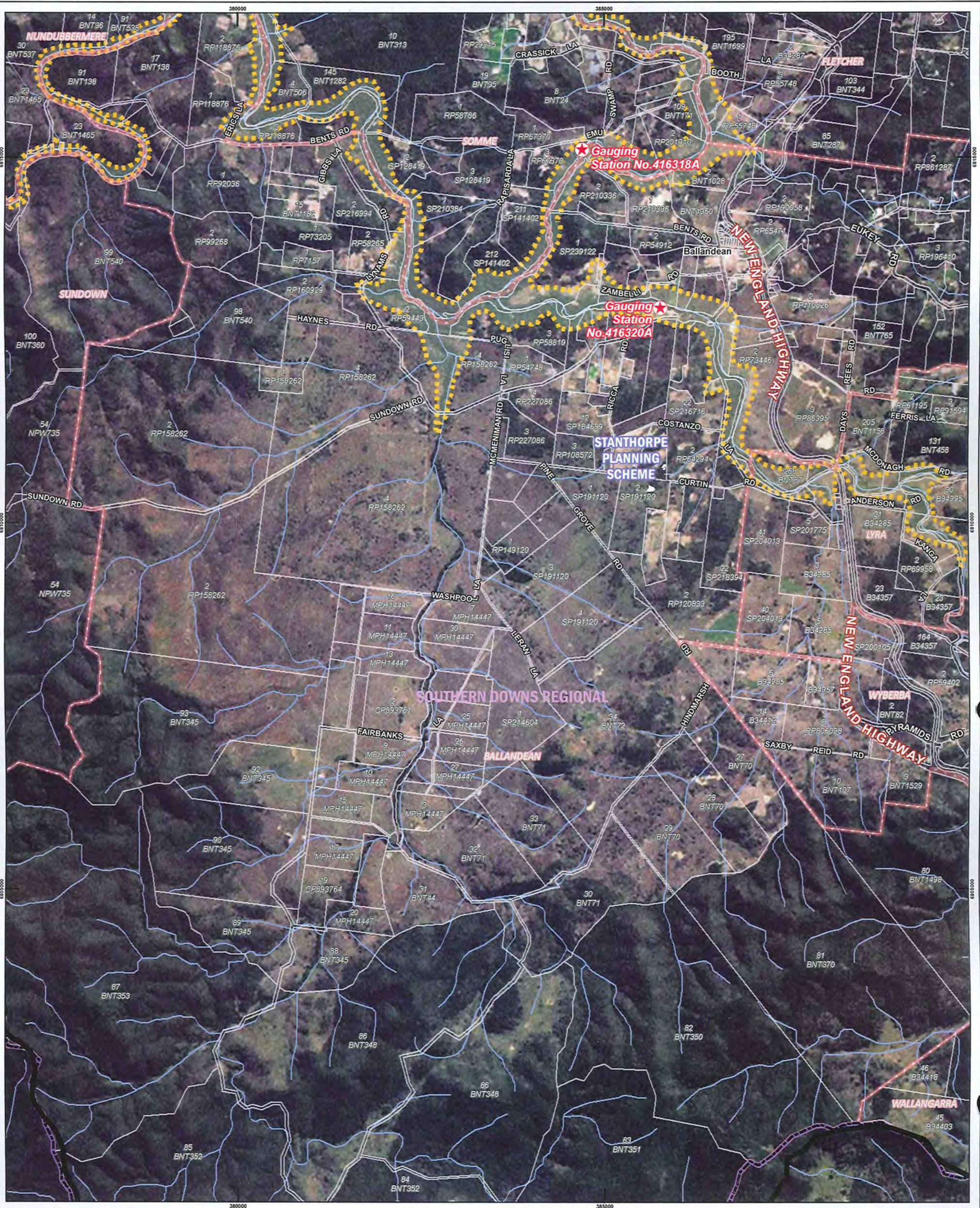
MAP INFORMATION	
Imagery:	ESRI ArcGIS Online Imagery Basemap
Cadastral:	Digital Cadastral Database (DCDB) is current at August 2011. Positional accuracy representing the 'maximum error' has been calculated at ± 57 metres.
Floodplain Assessment Overlay:	For more information regarding the capture of this line please see the Foreword at the front of this atlas.
Watercourses:	The average accuracy of the data is plus or minus 25 metres in the horizontal position
Drainage Sub-Basin:	Dumaresq River
Drainage Basin:	Border Rivers
Drainage Division:	Murray-Darling
Datum:	Horizontal - Geocentric Datum of Australia 1994 (GDA94)
Projection:	Horizontal - Map Grid of Australia (MGA94), which is a standard Universal Transverse Mercator (UTM) projection in Zone 56 with Central Meridian 153° East
Grid:	Grid lines are at 5 kilometre intervals
Technical enquiries:	The Manager GIS Mapping Services (Client Outcomes), Spatial Information Group Department of Environment and Resource Management GPO Box 2464, Brisbane QLD 4001



While every care is taken to ensure the accuracy of this data, the Department of Environment and Resource Management, and/or contributors to this publication, makes no representations or warranties about its accuracy, reliability, completeness or suitability for any particular purpose and disclaims all responsibility and all liability (including without limitation, liability in negligence) for all injuries, expenses, losses, damages (including indirect or consequential damage) and costs which might be incurred as a result of the data being inaccurate or incomplete in any way or for any reason.

Map No.:  
**4163.14**





**INTERIM FLOODPLAIN ASSESSMENT OVERLAY  
DUMARESQ RIVER SUB-BASIN  
2011 V1.0**

0 200 400 600 800 1000 2000 3000  
Metres

**SCALE 1:50000**  
Original Size is A3

© The State of Queensland (Department of Environment and Resource Management) 2011. Imagery © ESRI 2009.  
Produced for the Queensland Reconstruction Authority by the Department of Environment and Resource Management, August 2011.

LEGEND	
	Interim Floodplain Assessment Overlay
	Cadastre
	Planning Scheme Boundaries
	Locality Boundaries
	Current Local Government Boundaries
	Watercourses
	Drainage Divisions
	Drainage Basins
	Gauging Station

MAP INFORMATION	
Imagery:	ESRI ArcGIS Online Imagery Basemap
Cadastre:	Digital Cadastral Database (DCDB) is current at August 2011. Positional accuracy representing the 'maximum error' has been calculated at a 57 metres.
Floodplain Assessment Overlay:	For more information regarding the capture of this line please see the Foreword at the front of this atlas.
Watercourses:	The average accuracy of the data is plus or minus 25 metres in the horizontal position
Drainage Sub-Basin:	Dumaresq River
Drainage Basin:	Border Rivers
Drainage Division:	Murray-Darling
Datum:	Horizontal - Geocentric Datum of Australia 1994 (GDA94)
Projection:	Horizontal - Map Grid of Australia (MGA94), which is a standard Universal Transverse Mercator (UTM) projection in Zone 56 with Central Meridian 153° East
Grid:	Grid lines are at 5 kilometre intervals
Technical enquiries:	The Manager GIS Mapping Services (Client Outcomes), Spatial Information Group Department of Environment and Resource Management GPO Box 2454, Brisbane QLD 4001



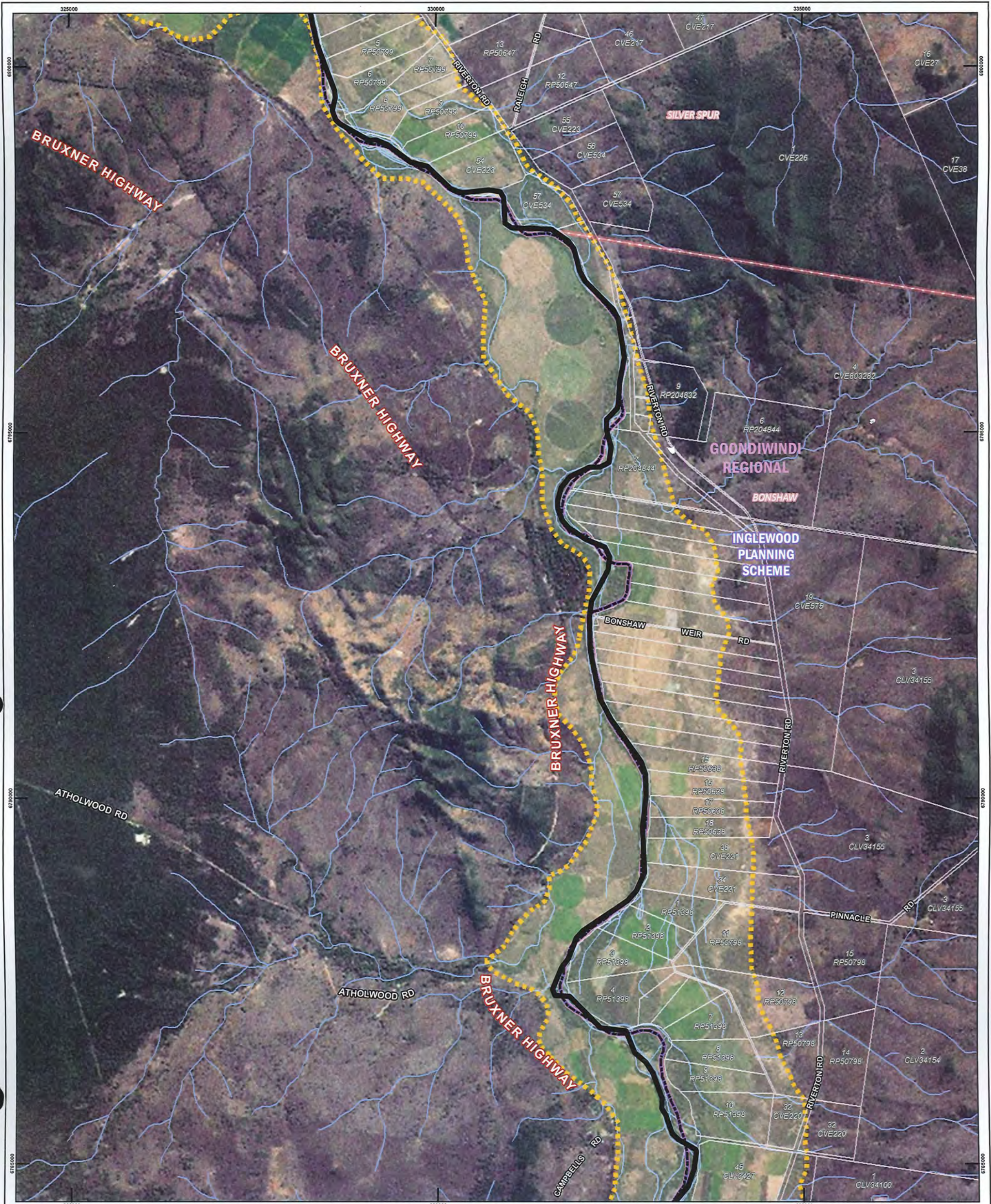
**Queensland Reconstruction Authority**

**Queensland Government**

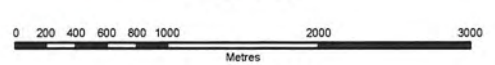
While every care is taken to ensure the accuracy of this data, the Department of Environment and Resource Management, and/or contributors to this publication, makes no representations or warranties about its accuracy, reliability, completeness or suitability for any particular purpose and disclaims all responsibility and all liability (including without limitation, liability in negligence) for all injuries, expenses, losses, damages (including indirect or consequential damage) and costs which might be incurred as a result of the data being inaccurate or incomplete in any way or for any reason.

Map No.:  
**4163.15**





**INTERIM FLOODPLAIN ASSESSMENT OVERLAY  
DUMARESQ RIVER SUB-BASIN  
2011 V1.0**



SCALE 1:50000  
Original Size is A3

© The State of Queensland (Department of Environment and Resource Management) 2011. Imagery © ESRI 2009.  
Produced for the Queensland Reconstruction Authority by the Department of Environment and Resource Management, August 2011.

LEGEND	
	Interim Floodplain Assessment Overlay
	Cadastre
	Planning Scheme Boundaries
	Locality Boundaries
	Current Local Government Boundaries
	Watercourses
	Drainage Divisions
	Drainage Basins
	Gauging Station

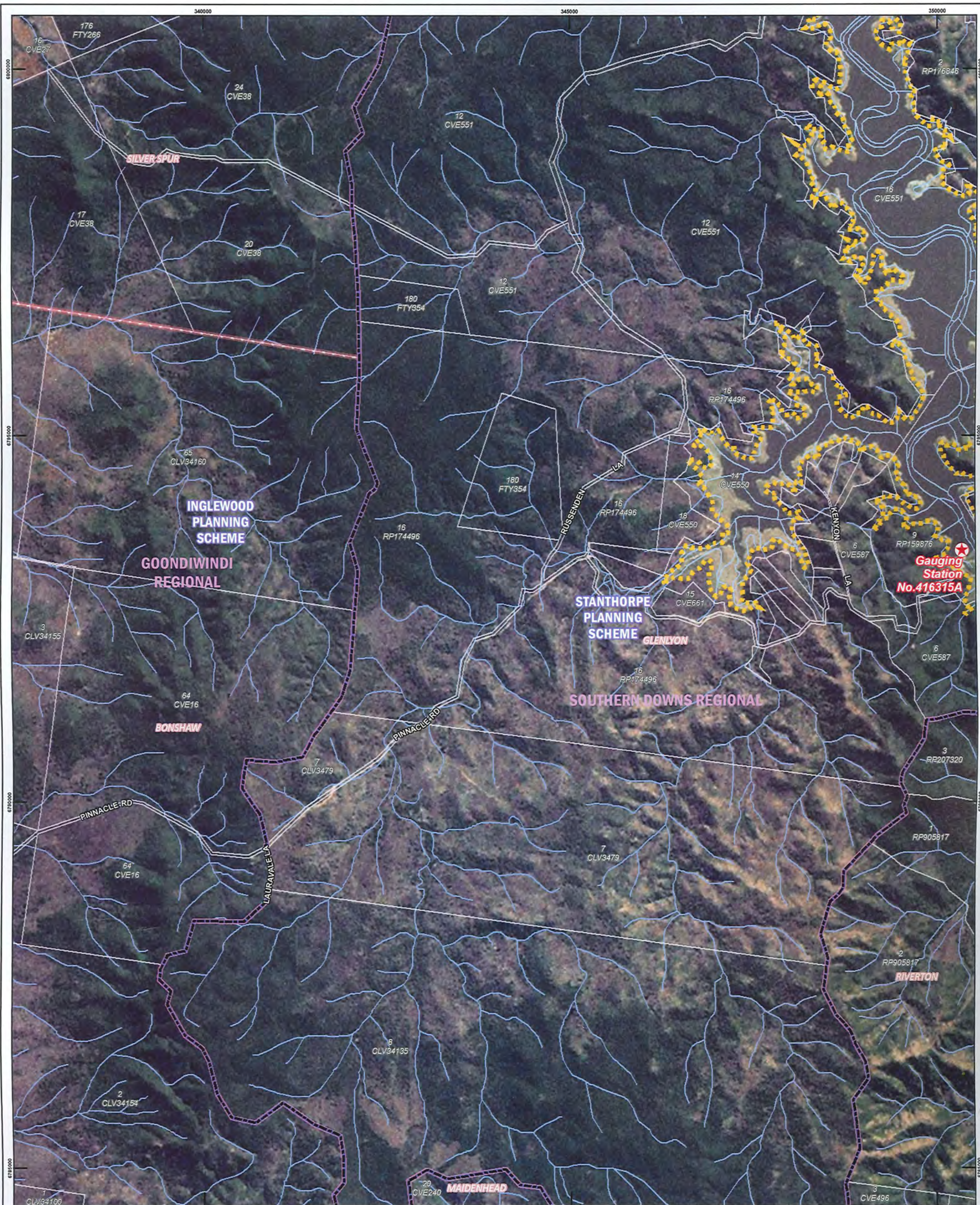
MAP INFORMATION	
Imagery:	ESRI ArcGIS Online Imagery Basemap
Cadastre:	Digital Cadastral Database (DCDB) is current at August 2011. Positional accuracy representing the 'maximum error' has been calculated at a 5' metres.
Floodplain Assessment Overlay:	For more information regarding the capture of this line please see the Foreword at the front of this atlas.
Watercourses:	The average accuracy of the data is plus or minus 25 metres in the horizontal position
Drainage Sub-Basin:	Dumaresq River
Drainage Basin:	Border Rivers
Drainage Division:	Murray-Darling
Datum:	Horizontal - Geocentric Datum of Australia 1994 (GDA94)
Projection:	Horizontal - Map Grid of Australia (MGA94), which is a standard Universal Transverse Mercator (UTM) projection in Zone 56 with Central Meridian 153° East
Grid:	Grid lines are at 5 kilometre intervals
Technical enquiries:	The Manager GIS Mapping Services (Client Outcomes), Spatial Information Group Department of Environment and Resource Management GPO Box 2454, Brisbane QLD 4001



While every care is taken to ensure the accuracy of this data, the Department of Environment and Resource Management, and/or contributors to this publication, makes no representations or warranties about its accuracy, reliability, completeness or suitability for any particular purpose and disclaims all responsibility and all liability (including without limitation, liability in negligence) for all injuries, expenses, losses, damages (including indirect or consequential damage) and costs which might be incurred as a result of the data being inaccurate or incomplete in any way or for any reason.

Map No.:  
**4163.16**





**INTERIM FLOODPLAIN ASSESSMENT OVERLAY  
DUMARESQ RIVER SUB-BASIN  
2011 V1.0**

0 200 400 600 800 1000 2000 3000  
Metres

**SCALE 1:50000**  
Original Size is A3

© The State of Queensland (Department of Environment and Resource Management) 2011. Imagery © ESRI 2009.  
Produced for the Queensland Reconstruction Authority by the Department of Environment and Resource Management, August 2011.

LEGEND	
	Interim Floodplain Assessment Overlay
	Cadastral
	Planning Scheme Boundaries
	Locality Boundaries
	Current Local Government Boundaries
	Watercourses
	Drainage Divisions
	Drainage Basins
	Gauging Station

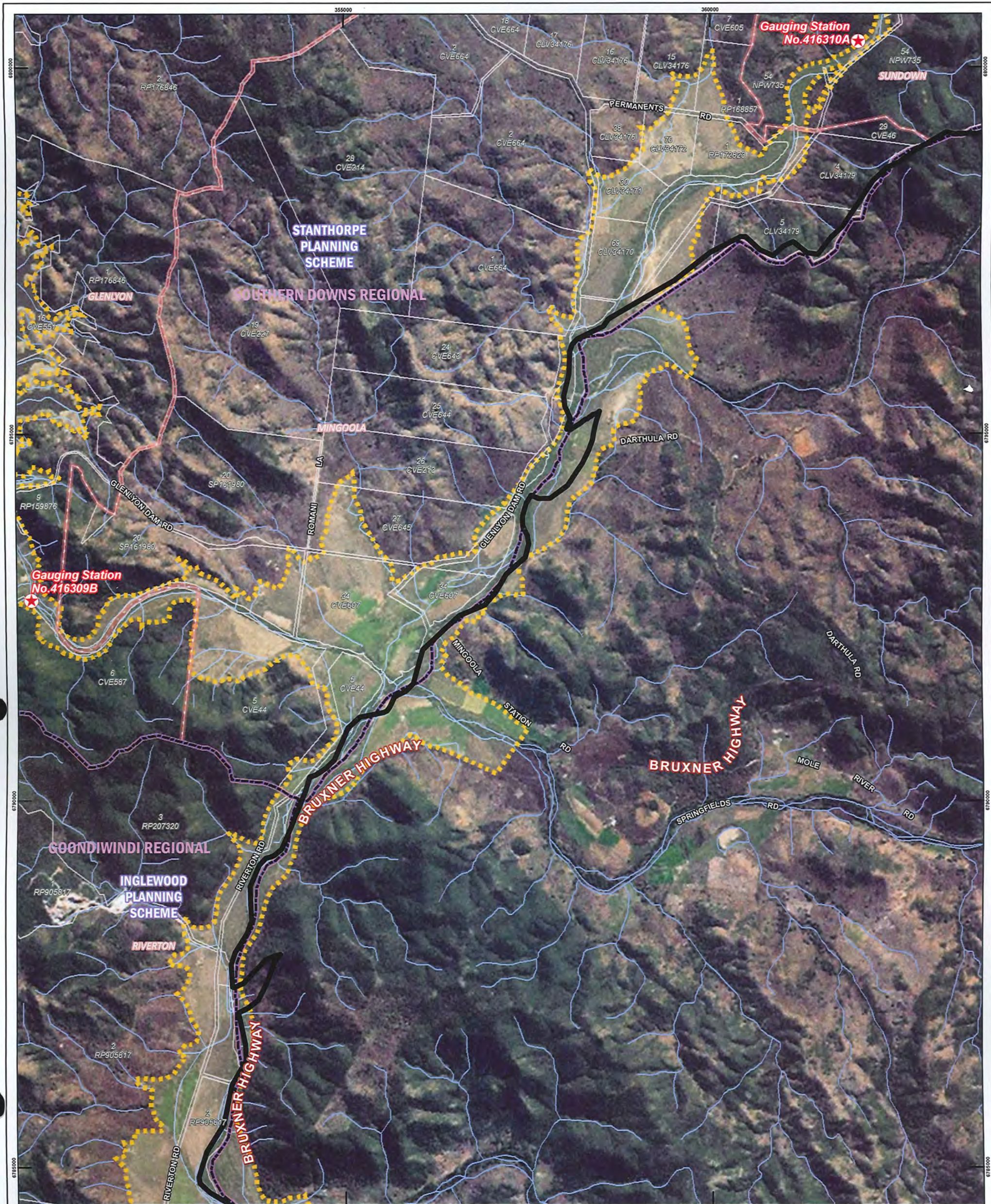
MAP INFORMATION	
Imagery:	ESRI ArcGIS Online Imagery Basemap
Cadastral:	Digital Cadastral Database (DCDB) is current as August 2011. Positional accuracy representing the 'maximum error' has been calculated at ± 57 metres.
Floodplain Assessment Overlay:	For more information regarding the capture of this line please see the Foreword at the front of this atlas.
Watercourses:	The average accuracy of the data is plus or minus 25 metres in the horizontal position
Drainage Sub-Basin:	Dumaresq River
Drainage Basin:	Border Rivers
Drainage Division:	Murray-Darling
Datum:	Horizontal - Geocentric Datum of Australia 1994 (GDA94)
Projection:	Horizontal - Map Grid of Australia (MGA94), which is a standard Universal Transverse Mercator (UTM) projection in Zone 56 with Central Meridian 153° East
Grid:	Grid lines are at 5 kilometre intervals
Technical enquiries:	The Manager GIS Mapping Services (Client Outcomes), Spatial Information Group Department of Environment and Resource Management GPO Box 2454, Brisbane QLD 4001



While every care is taken to ensure the accuracy of this data, the Department of Environment and Resource Management, and/or contributors to this publication, makes no representations or warranties about its accuracy, reliability, completeness or suitability for any particular purpose and disclaims all responsibility and all liability (including without limitation, liability in negligence) for all injuries, expenses, losses, damages (including indirect or consequential damage) and costs which might be incurred as a result of the data being inaccurate or incomplete in any way or for any reason.

Map No.:  
**4163.17**





**INTERIM FLOODPLAIN ASSESSMENT OVERLAY  
DUMARESQ RIVER SUB-BASIN  
2011 V1.0**



SCALE 1:50000  
Original Size is A3

© The State of Queensland (Department of Environment and Resource Management) 2011. Imagery © ESRI 2009.  
Produced for the Queensland Reconstruction Authority by the Department of Environment and Resource Management, August 2011.

LEGEND	
	Interim Floodplain Assessment Overlay
	Cadastral
	Planning Scheme Boundaries
	Locality Boundaries
	Current Local Government Boundaries
	Watercourses
	Drainage Divisions
	Drainage Basins
	Gauging Station

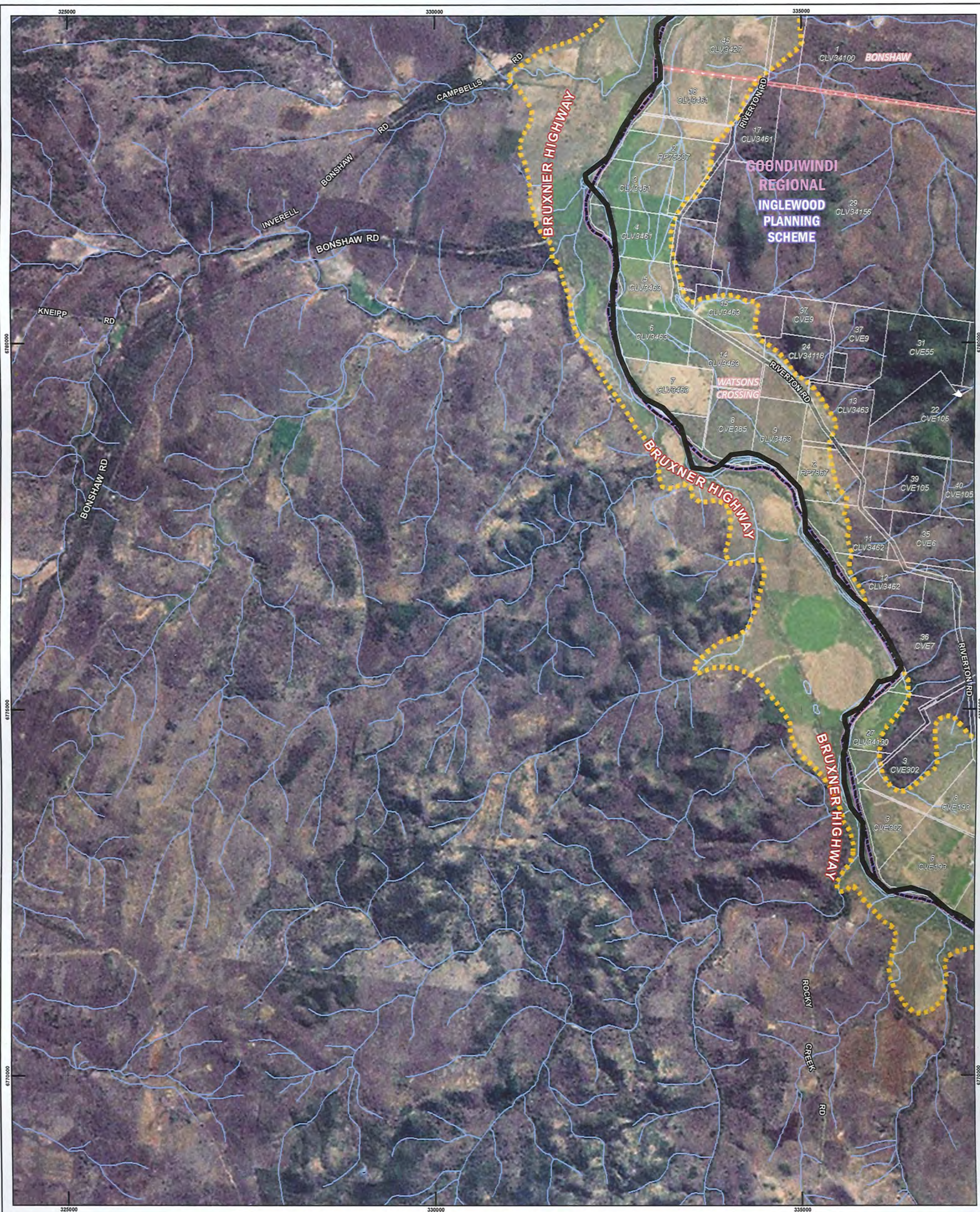
MAP INFORMATION	
Imagery:	ESRI ArcGIS Online Imagery Basemap
Cadastral:	Digital Cadastral Database (DCDB) is current as August 2011. Positional accuracy representing the 'maximum error' has been calculated at a 57 metres.
Floodplain Assessment Overlay:	For more information regarding the capture of this line please see the Foreword at the front of this atlas.
Watercourses:	The average accuracy of the data is plus or minus 25 metres in the horizontal position
Drainage Sub-Basin:	Dumaresq River
Drainage Basin:	Border Rivers
Drainage Division:	Murray-Darling
Datum:	Horizontal - Geocentric Datum of Australia 1994 (GDA94)
Projection:	Horizontal - Map Grid of Australia (MGA94), which is a standard Universal Transverse Mercator (UTM) projection in Zone 56 with Central Meridian 153° East
Grid:	Grid lines are at 5 kilometre intervals
Technical enquiries:	The Manager GIS Mapping Services (Client Outcomes), Spatial Information Group Department of Environment and Resource Management GPO Box 264, Brisbane QLD 4001



While every care is taken to ensure the accuracy of this data, the Department of Environment and Resource Management, and/or contributors to this publication, makes no representations or warranties about its accuracy, reliability, completeness or suitability for any particular purpose and disclaims all responsibility and all liability (including without limitation, liability in negligence) for all injuries, expenses, losses, damages (including indirect or consequential damage) and costs which might be incurred as a result of the data being inaccurate or incomplete in any way or for any reason.

Map No.:  
**4163.18**





**INTERIM FLOODPLAIN ASSESSMENT OVERLAY  
DUMARESQ RIVER SUB-BASIN  
2011 V1.0**

0 200 400 600 800 1000 2000 3000  
Metres

**SCALE 1:50000**  
Original Size is A3

© The State of Queensland (Department of Environment and Resource Management) 2011. Imagery © ESRI 2009.  
Produced for the Queensland Reconstruction Authority by the Department of Environment and Resource Management, August 2011.

**LEGEND**

- Interim Floodplain Assessment Overlay
- Cadastre
- Planning Scheme Boundaries
- Locality Boundaries
- Current Local Government Boundaries
- Watercourses
- Drainage Divisions
- Drainage Basins
- Gauging Station

**MAP INFORMATION**

Imagery: ESRI ArcGIS Online Imagery Basemap

Cadastre: Digital Cadastral Database (DCDB) is current as August 2011. Positional accuracy representing the 'maximum error' has been calculated at ± 57 metres.

Floodplain Assessment Overlay: For more information regarding the capture of this line please see the Foreword at the front of this atlas.

Watercourses: The average accuracy of the data is plus or minus 25 metres in the horizontal position

Drainage Sub-Basin: Dumaesq River

Drainage Basin: Border Rivers

Drainage Division: Murray-Darling

Datum: Horizontal - Geocentric Datum of Australia 1994 (GDA94)

Projection: Horizontal - Map Grid of Australia (MGDA), which is a standard Universal Transverse Mercator (UTM) projection in Zone 56 with Central Meridian 153° East

Grid: Grid lines are at 5 kilometre intervals

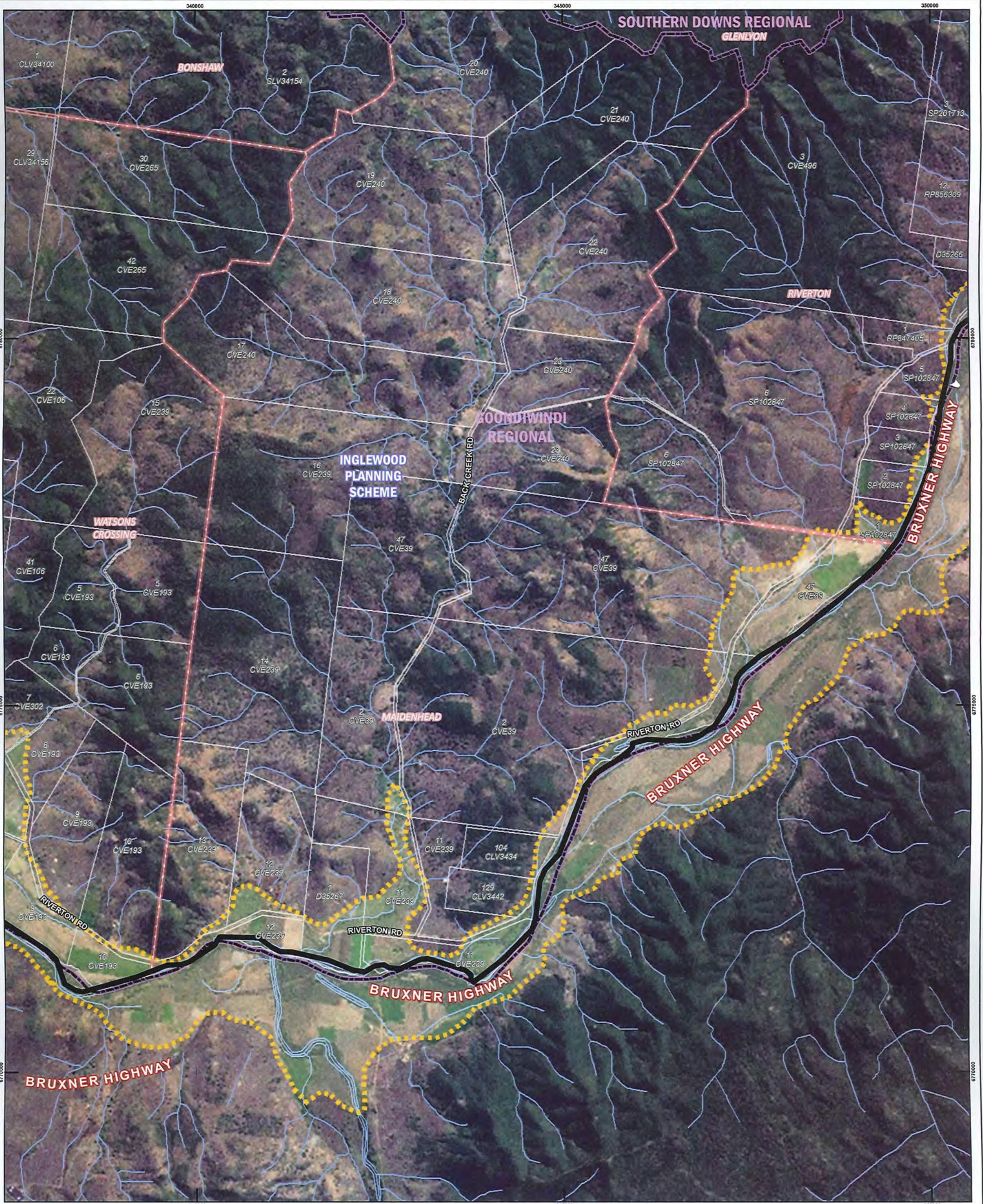
Technical enquiries:  
The Manager  
GIS Mapping Services (Client Outcomes), Spatial Information Group  
Department of Environment and Resource Management  
GPO Box 2454, Brisbane QLD 4001

While every care is taken to ensure the accuracy of this data, the Department of Environment and Resource Management, and/or contributors to this publication, makes no representations or warranties about its accuracy, reliability, completeness or suitability for any particular purpose and disclaims all responsibility and all liability (including without limitation, liability in negligence) for all injuries, expenses, losses, damages (including indirect or consequential damage) and costs which might be incurred as a result of the data being inaccurate or incomplete in any way or for any reason.

**Map No.:**  
**4163.19**







**INTERIM FLOODPLAIN ASSESSMENT OVERLAY  
DUMARESQ RIVER SUB-BASIN  
2011 V1.0**

0 200 400 600 800 1000 2000 3000  
Metres

**SCALE 1:50000**  
Original Size is A3

© The State of Queensland (Department of Environment and Resource Management) 2011. Imagery © ESRI 2009.  
Produced for the Queensland Reconstruction Authority by the Department of Environment and Resource Management, August 2011.

- LEGEND**
- Interim Floodplain Assessment Overlay
  - Cadastre
  - Planning Scheme Boundaries
  - Locality Boundaries
  - Current Local Government Boundaries
  - Watercourses
  - Drainage Divisions
  - Drainage Basins
  - Gauging Station

**MAP INFORMATION**

Imagery: ESRI ArcGIS Online Imagery Basemap

Cadastre: Digital Cadastral Database (DCDB) is current as of August 2011. Positional accuracy representing the 'maximum error' has been calculated as a 57 metres.

Floodplain Assessment Overlay: For more information regarding the capture of this line please see the Foreword at the front of this atlas.

Watercourses: The average accuracy of the data is plus or minus 25 metres in the horizontal position

Drainage Sub-Basin: Dumaresq River

Drainage Basin: Border Rivers

Drainage Division: Murray-Darling

Datum: Horizontal - Geocentric Datum of Australia 1994 (GDA94)

Projection: Horizontal - Map Grid of Australia (MGA94), which is a standard Universal Transverse Mercator (UTM) projection in Zone 56 with Central Meridian 153° East

Grid: Grid lines are at 5 kilometre intervals

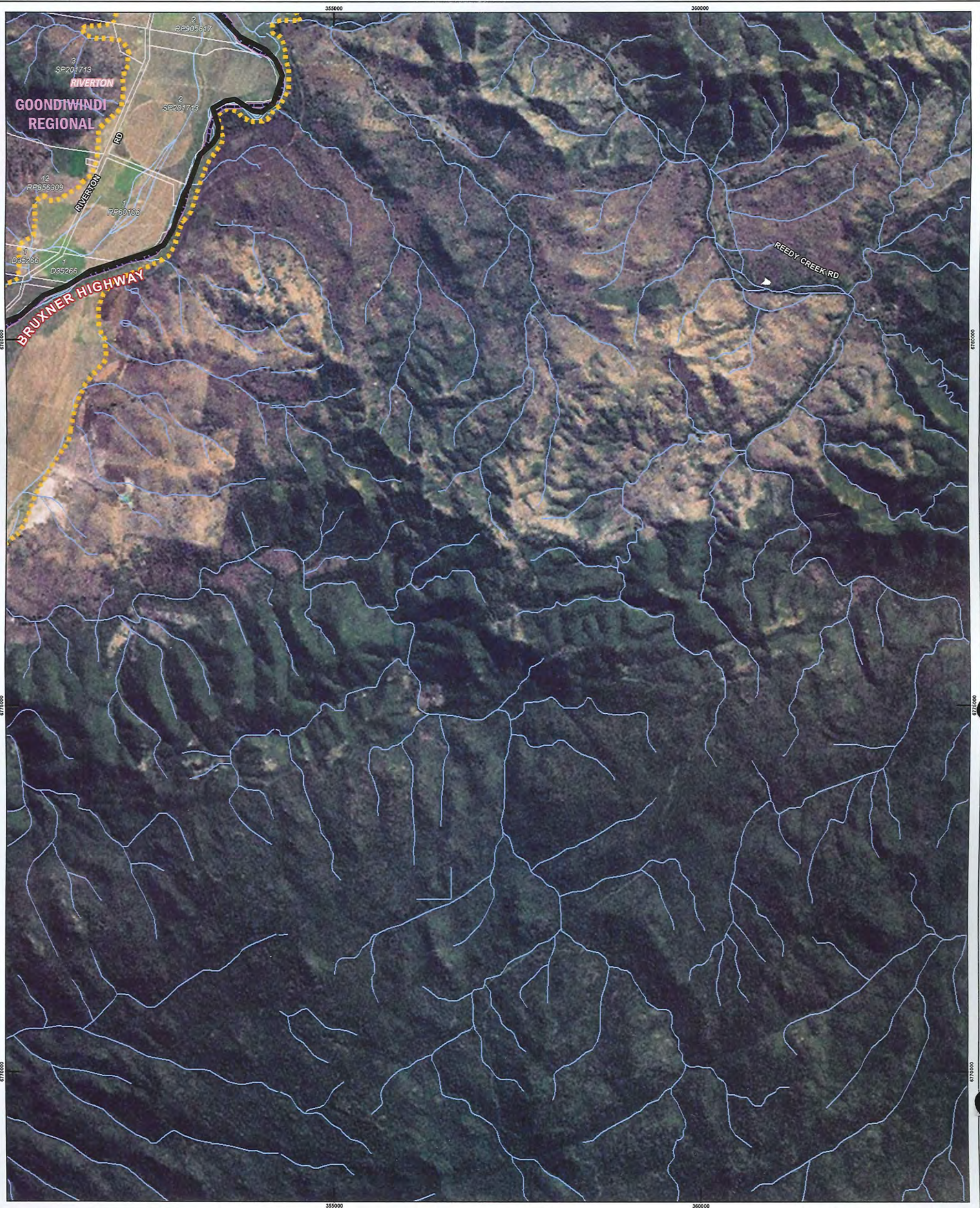
Technical enquiries:  
The Manager  
GIS Mapping Services (Client Outcomes), Spatial Information Group  
Department of Environment and Resource Management  
GPO Box 2454, Brisbane QLD 4001



While every care is taken to ensure the accuracy of this data, the Department of Environment and Resource Management, and/or contributors to this publication, makes no representations or warranties about its accuracy, reliability, completeness or suitability for any particular purpose and disclaims all responsibility and all liability (including without limitation, liability in negligence) for all injuries, expenses, losses, damages (including indirect or consequential damage) and costs which might be incurred as a result of the data being inaccurate or incomplete in any way or for any reason.

Map No.:  
**4163.20**





**INTERIM FLOODPLAIN ASSESSMENT OVERLAY  
DUMARESQ RIVER SUB-BASIN  
2011 V1.0**

0 200 400 600 800 1000 2000 3000  
Metres

**SCALE 1:50000**  
Original Size is A3

© The State of Queensland (Department of Environment and Resource Management) 2011. Imagery © ESRI 2009.  
Produced for the Queensland Reconstruction Authority by the Department of Environment and Resource Management, August 2011.

**LEGEND**

- Interim Floodplain Assessment Overlay
- Cadastre
- Planning Scheme Boundaries
- Locality Boundaries
- Current Local Government Boundaries
- Watercourses
- Drainage Divisions
- Drainage Basins
- Gauging Station

**MAP INFORMATION**

Imagery: ESRI ArcGIS Online Imagery Basemap

Cadastre: Digital Cadastral Database (DCDB) is current at August 2011. Positional accuracy representing the 'maximum error' has been calculated at ± 57 metres.

Floodplain Assessment Overlay: For more information regarding the capture of this line please see the Foreword at the front of this atlas.

Watercourses: The average accuracy of the data is plus or minus 25 metres in the horizontal position

Drainage Sub-Basin: Dumaresq River

Drainage Basin: Border Rivers

Drainage Division: Murray-Darling

Datum: Horizontal - Geocentric Datum of Australia 1994 (GDA94)

Projection: Horizontal - Map Grid of Australia (MGA94), which is a standard Universal Transverse Mercator (UTM) projection in Zone 56 with Central Meridian 153° East

Grid: Grid lines are at 5 kilometre intervals

Technical enquiries:  
The Manager  
GIS Mapping Services (Client Outcomes), Spatial Information Group  
Department of Environment and Resource Management  
GPO Box 2454, Brisbane QLD 4001

**Map No.:**  
**4163.21**



While every care is taken to ensure the accuracy of this data, the Department of Environment and Resource Management, and/or contributors to this publication, makes no representations or warranties about its accuracy, reliability, completeness or suitability for any particular purpose and disclaims all responsibility and all liability (including without limitation, liability in negligence) for all injuries, expenses, losses, damages (including indirect or consequential damage) and costs which might be incurred as a result of the data being inaccurate or incomplete in any way or for any reason.