



*Statewide Integrated Operational Planning Process*

*Making TSWL & Functional Management Simpler & More Consistent*

# **Regional Functional Plan 2009 – 2010**

## **South Western Region**

# **OPERATIONS MANAGEMENT**

## **Wildfire Operational Plan**

# TABLE OF CONTENTS

<b>1.0 INTRODUCTION .....</b>	<b>4</b>
1.1 Scope .....	4
1.2 Associated Documents.....	4
<b>2.0 OBJECTIVES .....</b>	<b>5</b>
<b>3.0 LINKAGE TO STRATEGIC PLANS .....</b>	<b>6</b>
<b>4.0 LINKAGE TO TOTAL STATION WORKLOAD.....</b>	<b>6</b>
<b>5.0 WILDFIRE OPERATIONAL PLAN.....</b>	<b>7</b>
5.1 Management of Plan.....	8
<b>6.0 INCIDENT CLASSIFICATIONS.....</b>	<b>9</b>
<b>7.0 WILDFIRE ALERT LEVELS.....</b>	<b>11</b>
7.1 Wildfire Alert Level 1 .....	13
7.2 Wildfire Alert Level 2 .....	13
7.3 Wildfire Alert Level 3 .....	13
7.4 Wildfire Alert Level 4.....	14
7.5 Common activation definitions.....	15
7.6 Wildfire activation process.....	17
7.7 Fire Behavior .....	18
7.8 Weight of initial attack.....	19
<b>8.0 WILDFIRE ALERT LEVEL ACTIVITIES.....</b>	<b>20</b>
<b>9.0 ACTIVATION DESCRIPTORS .....</b>	<b>23</b>
<b>9.1 Strike Teams .....</b>	<b>23</b>
9.1.1 Rural Strike Teams .....	23
9.1.2 Urban Strike Teams.....	23
9.1.3 Strike Team Activation .....	23
9.1.4 Strike Team Identification.....	23
<b>9.2 Incident Control Centres.....</b>	<b>24</b>
9.2.1 Activation of pre-determined Incident Control Centres .....	24
<b>9.3 Regional Fire Coordination Centre (ROCC) .....</b>	<b>24</b>
9.3.1 Activation of ROCC.....	24
<b>10.0 REGIONAL INFRASTRUCTURE .....</b>	<b>26</b>

10.1 Overview.....	26
11.0 PRE-DETERMINED INCIDENT CONTROL CENTRES (ICC) .....	27
11.1 Geographical areas managed by pre-determined ICC's.....	27
11.1.1 Toowoomba ICC.....	28
11.1.2 Warwick ICC.....	29
11.1.3 Stanthorpe ICC.....	32
11.1.4 Millmerran ICC.....	34
11.1.5 Crowsnest ICC.....	38
11.1.6 Tara ICC.....	39
12.0 REGIONAL OPERATIONS COORDINATION CENTRE (ROCC) .....	41
12.1 Purpose of ROCC .....	41
12.2 Location of ROCC and resources .....	41
12.3 ROCC Team.....	42
12.4 Staffing of ROCC .....	43
12.5 Roles & Responsibilities of ROCC Team Members .....	44
12.6 Reporting & Communications Structures .....	46
12.7 De-Commissioning of ROCC .....	47
12.8 Preparedness and Maintenance of ROCC .....	47
13.0 REGIONAL TEAMS.....	48
14.0 AIR OPERATIONS.....	49
15.0 COMMUNICATION PLANS.....	50
15.1 Toowoomba .....	51
15.2 Warwick .....	52
15.3 Stanthorpe.....	53
15.4 Millmerran.....	54
15.5 Dalby.....	55
15.6 Tara.....	56
15.7 Crowsnest.....	57
Radio channel and station Identifier .....	58
Map of Radio repeaters .....	61

## 1.0 INTRODUCTION

In order to ensure a coordinated response to wildfires, it is essential that all staff within the Queensland Fire and Rescue Service (QFRS) South West Region (permanent, auxiliary and volunteers) operate according to policies, procedures and practices as prescribed in the:

- QFRS Operations Doctrine Manual
- Region iZone Plan 2009-2010
- Region Wildfire Management Plan 2009-2010.

### 1.1 Scope

This plan will operate from 1 August 2009 to 30 July 2010 and applies to all permanent, auxiliary and volunteer Officers and Fire fighters in South Western Region.

This plan is restricted to managing wildfire operations and excludes:

- (a) Training associated with fighting wildfires
- (b) Community education.

This plan will be implemented in the areas identified in the plan, it must be noted that with such a large Region there will areas where the plan is not applicable.

### 1.2 Associated Documents

Doc Ref	Title
1	Regional iZone Plan 2009-2010
2	Operations Doctrine Manual
3	State Operations Coordination Centre Operational Procedures
4	Regional Fire Coordination Centre Activation Procedures
5	Commissioners Priorities

## **2.0 OBJECTIVES**

To ensure the required infrastructure for the Regional Operations Coordination Centre (ROCC) and pre-determined Incident Control Centres (ICC's) are in a constant state of readiness, thereby minimising the risk to fire officers and the community.

This plan has been developed to provide a holistic approach to wildfire operations that includes:

- Wildfire preparedness (infrastructure & resources)
- Proactive strategies (including pre-emptive activities to manage response to wildfires along with weight of initial attack process and activities in place). It is now QFRS policy where possible to assign additional resources with available aircraft support to rapidly suppress wildfires while they are still in a containable situation. This approach is to remove the threat of wildfires escalating to a point beyond human control in conditions that are severe or are predicted to deteriorate.
- Coordinated wildfire response (permanent, auxiliary and volunteer staff)
- Coordinated wildfire operations at the:
  - Fire ground ;
  - Operations Point;
  - Incident Control Centres; and
  - Coordination Centres (Regional and State).

### **Regional Outcomes**

- The ROCC and ICC's operating according to pre-determined stages, including the required:
  - Staffing
  - Infrastructure
- Meeting the requirements as described in the Operations Doctrine Manual.

### **Measures**

- ROCC infrastructure in place and operational all year round
- Pre-determined ICC infrastructure in place and operational all year round
- Implementation of all aspects of this Wildfire Operational Plan in accordance with the criteria described in the wildfire alert levels.

### 3.0 LINKAGE TO STRATEGIC PLANS

This Wildfire Operational Plan contributes towards the requirements to achieve:

- Whole-of-Government Priorities
- Department of Emergency Services Corporate Plan 2008-2012
- QFRS Strategic Plan 2004-2008

#### QFRS Strategic Plan 2008-2012

- **QFRS Goal 2 – Emergency Response**  
To provide effective and efficient operational service delivery
  - Strategies:
    - Strategy 2.1 Use appropriate resources and a flexible approach to service delivery that matches community needs
    - Strategy 2.2 Provide integrated service delivery that is responsive to the diversity of Queensland communities
    - Strategy 2.3 Provide operational best practice equipment, communications and technology to support service delivery

### 4.0 LINKAGE TO SIOPP- AREA REFERENCE MANUAL

- To complement activities undertaken at station, brigade and regional level under Functional Management the following business rules support this plan.

#### Operations Management A1

- A 1.8 Participate in Regional Planning-Operations Management
- A 1.9 Ensure operational readiness

#### Operations Management A2

- A 2.1 Monitor and report seasonal conditions for Bureau of Meteorology
- A 2.2 Manage education programs for Bushfire prepared communities.
- A2.3 Identify, Develop and maintain Local Area Plans of risks in your patch
- A2.6 Apply Operations Doctrine to manage response
- A2.7 Implement Prepare, Stay and Defend or Go Early

## 5.0 WILDFIRE OPERATIONAL PLAN

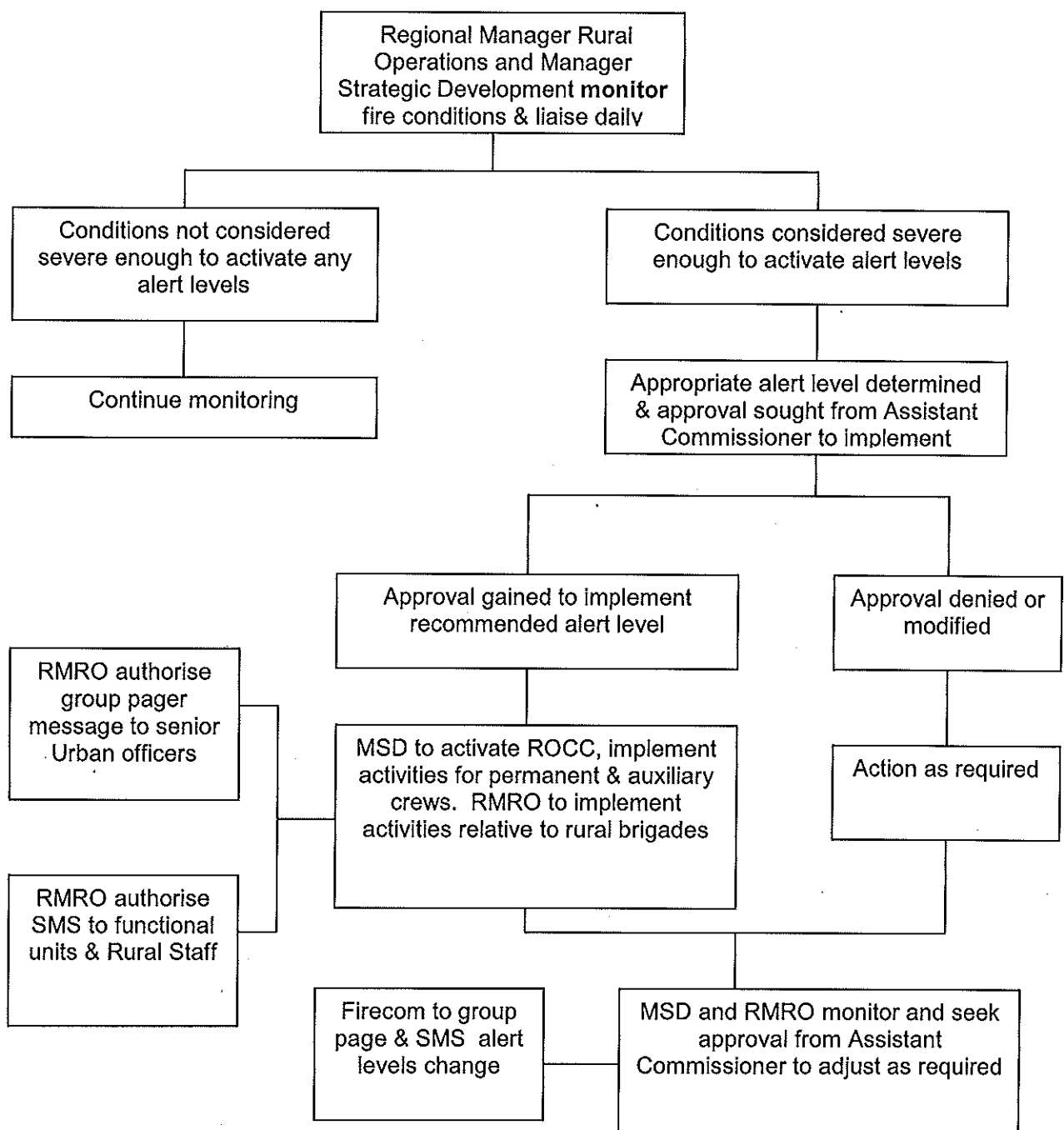
OPERATIONS MANAGEMENT	Wildfire Operational Plan	Preparedness and Response			
<b>General Description:</b> This Plan provides for: <ul style="list-style-type: none"><li>• Wildfire preparedness (infrastructure &amp; resources)</li><li>• Proactive strategies (including pre-emptive activities to manage response to wildfires)</li><li>• Coordinated wildfire response (permanent, auxiliary and volunteer staff)</li><li>• Coordinated wildfire operations at the:<ul style="list-style-type: none"><li>○ Fire ground;</li><li>○ Incident Control / Operational Point ;</li><li>○ Incident Control Centres; and</li><li>○ Coordination Centres (Regional and State).</li></ul></li></ul>					
<b>Outcomes:</b> <ul style="list-style-type: none"><li>• The ROCC and ICC's operating according to pre-determined stages, including the required:<ul style="list-style-type: none"><li>○ Staffing</li><li>○ Infrastructure</li></ul></li><li>• Meeting the requirements as described in the Operations Doctrine Manual.</li></ul>					
<b>Measures:</b> <ul style="list-style-type: none"><li>• ROCC infrastructure in place and operational</li><li>• Pre-determined ICC infrastructure in place and operational</li><li>• Implementation of all aspects of this Wildfire Operational Plan in accordance with the criteria described in the wildfire alert levels.</li></ul>					
Activity and Measure		Target	Due Date	Action Officer	Comment
ROCC infrastructure in accordance with operational requirements to coordinate information and activities between ICC's and State Operations Coordination Centre		Toowoomba ROCC	1 August 2009	Manager Regional Training	Completed and tested
Pre-determined ICC infrastructure (as per ICC standards) in place and operational		6 pre-determined ICC's	1 August 2009	Area Directors Urban and Rural	Mobile ICC Kits completed and allocated
Wildfire Operational Plan managed in accordance with stated requirements (see Management of Plan) & associated alert levels (see Wildfire Alert Levels)			On-Going	Area Directors Urban and Rural	Utilise information from Mobilisation Plan and ROCC Activation Plan

## 5.1 Management of Plan

This Wildfire Operations Plan is for the 2009/2010 financial year. The "fire season" is expected to last from August to December however, the actual duration will depend upon prevailing weather conditions. The Area Directors Urban and Rural will provide advice to the Regional Assistant Commissioner on the progression and severity of the fire season.

Refer to the flow chart below and Section 7.5 (Wildfire Alert Level's Activation Table) for guidance on implementing this plan.

During the fire season, weekly planning meeting will be conducted at the ROCC for the purpose of updating information and group decisions on recommended alert levels.





## 5.2 Distribution

Name/Title	Position/Location
Tom Dawson	Assistant Commissioner Regional Office Toowoomba
Area Directors	All Functional Managers & Area Directors Urban and Rural, South Western Region
Fire Stations	Anzac Avenue, Kitchener Street and Warwick Fire Station
Rural Fire Brigades	All Rural, Village and Izone brigades and Groups
Wayne Waltisbuhl	Regional Manager Rural Operations Regional Office Toowoomba
Laurie Bill	Manager Strategic Development, Regional Office Toowoomba
ROCC Co-ordinator	Regional Coordinator Regional Fire Coordination Centre, Anzac Avenue
Firecom Manager	Firecom, Toowoomba
Incident Control Centres	Toowoomba, Crows Nest, Stanthorpe, Warwick, Tara and Millmerran
Director Operations	State Operations Coordination Centre
Director Rural Operations	Rural Operations Central Office Kedron
State Coordinator	State Operations Coordination Centre
Director	Organisational Performance Unit

## 6.0 INCIDENT CLASSIFICATIONS

There are three levels of incident classifications related to wildfires. These are:

### Level 1

- Small to medium fires that will be contained by the initial attack resources. These are expected to be solely QFRS resources.
- Typically, these fires can be controlled within 12 hours.
- These will be managed by mobile control or an Incident Control Centre using local resources.

NB. A wildfire may exceed this time scale and still remain a Level 1 incident if located in inaccessible terrain and not threatening or damaging assets.

Weather characteristics associated with level 1 are:

- (a) Temperatures around 30°C
- (b) Humidity less than 30%
- (c) Dew point less than 15°C
- (d) Wind 20km/h or more NNW to SSW
- (e) Drought Index over 80

## Level 2

- Fires that are medium to large may require extended attack and likely to involve multiple agencies.
- Assets that are at risk possibly including those assets with environmental cultural and heritage significance.
- Typically, these fires can be controlled within 12 to 24 hours.
- An Incident Control Centre should be implemented using local and regional resources.

Weather characteristics associated with level 2 are:

- (a) Temperatures in the mid 30°C's
- (b) Humidity is less than 20%
- (c) Dew point in single figures or in the minus
- (d) Wind 25 to 35km/h NW to SW
- (e) Drought Index is over 100

## Level 3

- Large and complex fires that may take several days to control and suppress.
- Likely to occur at times of very high or extreme fire weather conditions, with a significant fire risk and potentially uncertain fire behaviour.
- Significant assets at risk with potentially high suppression costs. May also apply when significant environmental, cultural or heritage assets are at risk.
- This type of incident is where the State Incident Management Team (SMT) could be deployed [supported by local and regional resources].

Weather characteristics associated with level 3 are:

- (a) Temperatures are usually in the mid to high 30°C's
- (b) Humidity is less than 10%
- (c) Dew point is below -5°C
- (d) Wind is often above 30km/h and is land based WNW
- (e) Drought Index is over 120

In these conditions all fuel becomes available. Usually, only defensive strategies should be employed. Back-burning or burning out areas should not occur, as containment would almost be impossible. Suppression is expected to be very difficult to achieve.

## 7.0 WILDFIRE ALERT LEVELS

Wildfire Alert Levels are based on the Fire Danger Ratings (FDR) from the Macarthur Forest Fire Danger Meter Mark 5. The ranging from Low to Extreme FDR's are the primary basis for developing and determining a level of pre-emptive response to wildfire management in the Region.

All current and forecasted weather are taken into account when determining the FDR as well as current fire activity.

RMRO, ADRO's and MSD will monitor the Bureau of Meteorology (BOM) weather forecast and local Drought Indexes.

The MSD and RMRO will liaise daily during the fire season to **determine** the alert level the Region should activate.

Operating in conjunction with the Wildfire Alert Levels are pre-emptive regional activities in accordance with the table below.

**Southwest Region WAL covers the whole Region. All resources will be at the same alert and preparedness level to meet the highest risk that the Region has to manage.**

### Part 1 - WILDFIRE ALERT LEVELS

There is an indirect correlation between the Fire Danger Rating Index (FDRI) and the Wildfire Alert Level (WAL). This allows Regions to apply local knowledge to local conditions, with available resources in determining the appropriate WAL and therefore activation.

The decision process for determining the WAL is a combination of:

Fire Danger Rating Index	+	Variables	=	Wildfire Alert Level
The QFRS will use the Fire Danger Rating Graphic (FDRG) which includes <ul style="list-style-type: none"><li>- The FDRI;</li><li>- Temperature;</li><li>- Relative Humidity;</li><li>- Wind speed;</li><li>- Wind direction;</li><li>- Forest fuel drought factor; and</li><li>- Grassland curing and loading data.</li></ul>		<ul style="list-style-type: none"><li>• Fire activity</li><li>• Fuel</li><li>• Fire history (in the local area)</li><li>• Seasonal developments</li><li>• Local knowledge</li><li>• Potential community risk</li></ul>		<b>Level 1 to 4</b>

The Regional Manager, Rural Operations (RMRO) to consult with the Assistant Commissioner (AC) before endorsing the WAL for the whole Region.

## Part 2 - WILDFIRE ALERT LEVEL ACTIVATION TABLE

Wildfire Alert Level Activation Table for a Region									
ALERT LEVEL	WILDFIRE ACTIVATION ACTIVITIES - #								
	Staff and Agencies	Weight of Initial Attack *	Rural Region Reporting **	Resources Prepared	Community Warnings ***	Fire Permits +	ICC	ROCC	SOCC
4	Notify and activate relevant staff and agencies	Maximise initial response	RMRO Liaise with Region AC	Optimum resources staged where appropriate	Issue Community Warnings	Implement Fire Ban	Standby	Activated	Alert
3	Notify relevant staff and agencies	Increase initial response	RMRO Liaise with Region AC	Additional resources verified	Contact key stakeholders Consider Issuing General Community Advice & Warnings	Consider Local Fire Permits Restrictions	Alert	Alert/ Standby	Watching brief
2	Notify relevant staff	Normal response	Liaise Through RMRO	Additional resources identified	Provide general Community Safety information and advice	Ensure Adequate Fire Permit Conditions	Alert	Watching brief	Watching brief
1	NORMAL BUSINESS								

# These are the minimum activity requirements. Regions may increase these activity categories (columns) based on local conditions (but may not increase or decrease the Alert Levels 1 to 4)

\* **Weight of initial attack:** Regions should consider additional appliances and air attack based on the risk and available resources.

\*\* Rural reporting to the Region AC at WAL 3 and 4 because Level 2 or 3 incident (s) are expected to occur or have occurred.

\*\*\* **Community Advice and Warnings:** Community advice and warnings should escalate with increasing WAL as described in the Regional Wildfire Readiness Plan

+ **Permit Restrictions and Fire Bans:** RMRO or designate to solely handle attaining Fire Ban approvals along with implementation of Fire Permit variations and instructions in a Region.

## 7.1 Wildfire Alert - Level 1

### Characteristics of Level 1

Fire Danger Rating Index	+	Variables	=	Wildfire Alert Level
Temperatures <30oC Humidity > 40% Dew Point > 20oC Wind <15 kmh Drought Index < 80		<ul style="list-style-type: none"><li>• Fire activity</li><li>• Fuel</li><li>• Fire history (in the local area)</li><li>• Seasonal developments</li><li>• Local Knowledge</li><li>• Potential community risk</li></ul>		<b>Level 1</b>

Alert Level 1 is normal conditions and fire activity is normal for that time of year or conditions are such that there is no adverse threat of fire. Rural and Urban Regional Fire Management Team consult regularly to establish future forecasts.

## 7.2 Wildfire Alert - Level 2

### Characteristics of Level 2

Fire Danger Rating Index	+	Variables	=	Wildfire Alert Level
Temperatures around 30o C Humidity less than 30% Dew Point less than 15oC Wind 20 klm/h Drought Index over 80		<ul style="list-style-type: none"><li>• Fire activity</li><li>• Fuel</li><li>• Fire history (in the local area)</li><li>• Seasonal developments</li><li>• Local Knowledge</li><li>• Potential community risk</li></ul>		<b>Level 2</b>

The above table is a guide and the appropriate Wildfire Alert Level should be determined based on the fire danger index, a combination of the variables and discussion between the Rural and Urban Regional Fire Management Team with consideration given to the number of active fires in the Region.

## 7.3 Wildfire Alert - Level 3

### Characteristics of Level 3

Fire Danger Rating Index	+	Variables	=	Wildfire Alert Level
Temperatures in the mid 30o C Humidity less than 20% Dew Point in single figures or in the minus Wind 25 - 35klm/h Drought Index over 120		<ul style="list-style-type: none"><li>• Fire activity</li><li>• Fuel</li><li>• Fire history (in the local area)</li><li>• Seasonal developments</li><li>• Local Knowledge</li><li>• Potential community risk</li></ul>		<b>Level 3</b>

The above table is a guide and the appropriate Wildfire Alert Level should be determined based on the fire danger index, a combination of the variables and discussion between the Rural and Urban Regional Fire Management Team and consideration given to complexity and number of fires burning in the Region.

## 7.4 Wildfire Alert - Level 4

### Characteristics of Level 4

Fire Danger Rating Index	+	Variables	=	Wildfire Alert Level
Temperatures in the mid 30o C Humidity less than 10% Dew Point less than -5oC Wind is often 30km/h Drought Index over 120		<ul style="list-style-type: none"> <li>• Fire activity</li> <li>• Fuel</li> <li>• Fire history (in the local area)</li> <li>• Seasonal developments</li> <li>• Local Knowledge</li> <li>• Potential community risk</li> </ul>		<b>Level 4</b>

The above table is a guide and the appropriate Wildfire Alert Level should be determined based on the fire danger index, a combination of the variables and discussion between the Rural and Urban Regional Fire Management Team. This is the highest level of alert and consideration will include Fire-fighter safety and communities at risk.

---

## 7.5 COMMON ACTIVATION DEFINITIONS

To accommodate the wide variance of emergency situations and events the ICC, ROCC and SOCC common activation levels will be:

- Watching Brief
- Alert
- Standby
- Activation

### Watching Brief

The Watching Brief involves monitoring the warnings about a potential incident that may require activation of all or part of a ROCC.

During the Watching Brief the nominated representative will ensure the following is carried out:

- Watch the developing situation/s during normal business hours and under normal operating conditions and,
- A coordinator/monitor is appointed to be available to remain in the ROCC during normal business hours in Alert
- Keep the AC and RMRO or SOCC Management Group informed of unfolding events.

**Note:** The Watching Brief **does not** require a coordinator/monitor to remain in the ROCC or SOCC

### Alert

Alert involves ensuring the ICC, ROCC or SOCC is ready to be activated.

During Alert the nominated representative will ensure the following is carried out:

- Check, prepare and verify the ICC and ROCC can be activated (check that phone lines and faxes will work, emails will work, etc)
- ICC kits are checked for accessibility and completeness
- Watch the developing situation/s during all hours (either on site or off site) and,
- Identify ICC or ROCC staff who can attend the centre within 1 hour
- If not done so in your plans a coordinator/monitor is appointed to be available to remain in the ROCC during all hours in Standby
- A coordinator/monitor is appointed to be available to remain in the ICC during normal business hours in Standby
- Keeps the AC and RMRO or SOCC Management Group informed of unfolding events.

**Note:** Alert **does** require a coordinator/monitor to remain in the ROCC or SOCC during normal business hours only

Alert **does not** require a coordinator/monitor to remain in the ICC

---

## **Standby**

Standby involves the initial opening the ICC, ROCC or SOCC so it is ready to be fully activated within 60 minutes.

During Standby the nominated representative will ensure the following is carried out:

- Open the ICC or ROCC (make sure that phone lines and faxes are working, emails are working, etc)
- Watch the developing situation/s during all hours and,
- Identify ICC or ROCC staff who can attend the centre within 1 hour
- A coordinator/monitor is appointed to be available to remain in the ICC during all hours in Activation
- Keeps the AC and RMRO or SOCC Management Group informed of unfolding events.

**Note:** Standby **does** require a coordinator/monitor to remain in the ROCC or SOCC during all hours

Standby **does** require a coordinator/monitor to remain in the ICC during normal business hours only

## **Activation**

Activation involves expanding the operations and staffing of the ICC or ROCC to meet the current and projected situation.

**Note:** Activation **does** require a coordinator/monitor to remain in the ROCC during all hours of its operation

Activation **does** require a coordinator/monitor to remain in the ICC during all hours of its operation.

## **Scale Down**

Scale Down will be advised when the ICC or ROCC is to begin demobilisation. The scale down of the ICC or ROCC may be staged by functional area at the discretion of the coordinator. Debriefing of the operational activities of the ICC, ROCC and SOCC will follow the final stand down.

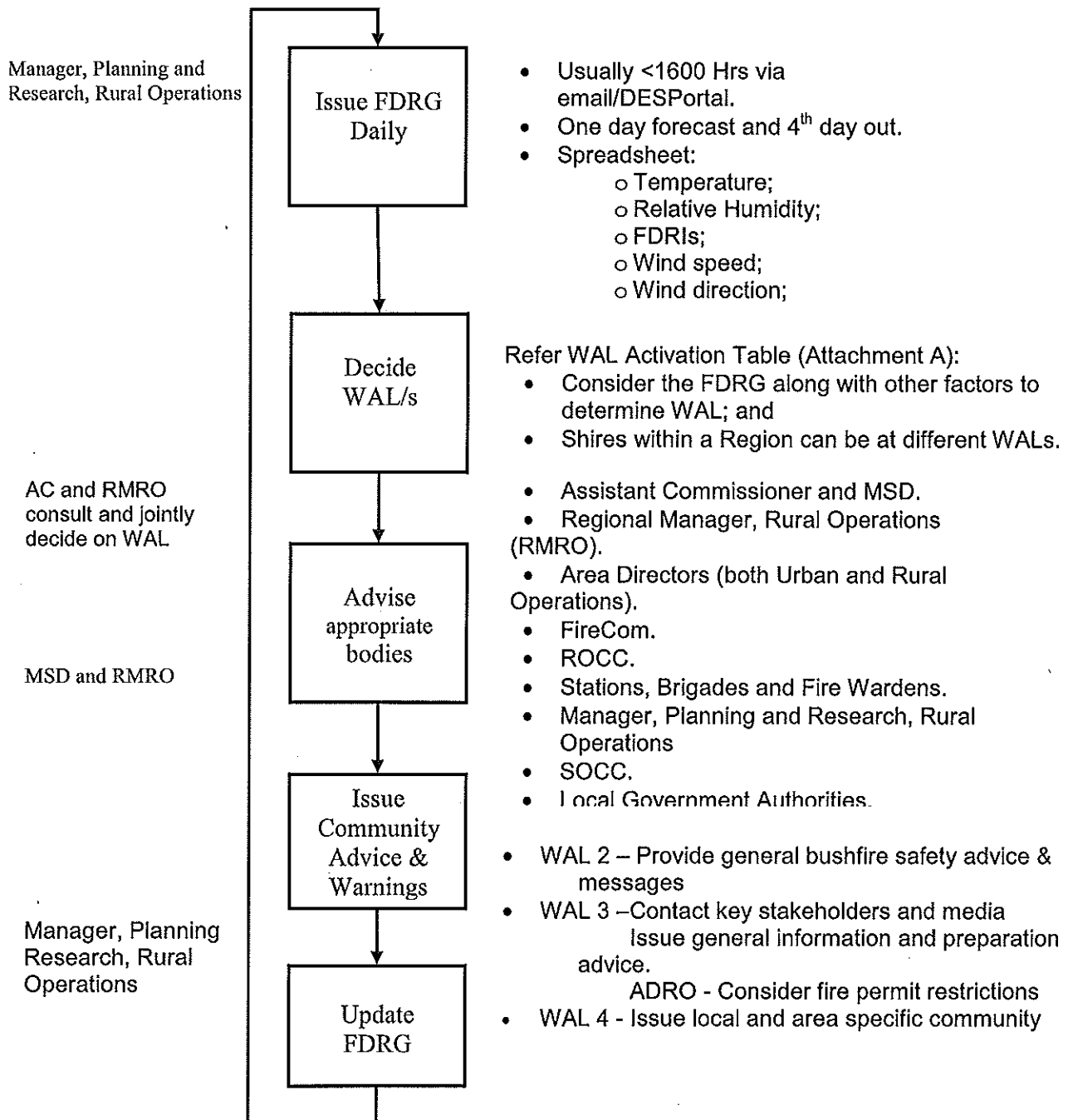
## **Approval Process for Activation Levels**

The approval process to move into a Watching Brief and then between activations is dependant on the situation. **If it is a Wildfire, then:**

- The RMRO\*, for the Region consults with the AC before deciding on the WAL for the whole Region
- For the SOCC, it involves the approval by one of the following Senior Managers, Deputy Commissioner, QFRS, QAS or Deputy Executive Director, EMQ. The Deputy Commissioners or Deputy Executive Director will delegate a person to activate the SOCC.



## 7.6 Wildfire Activation Process



---

## 7.7 Fire Behaviour

Fire behaviour is influenced by a number of factors:

- Fuel – type, arrangement and quantity.
- Topography, Slope and Aspect – flat, undulating, hilly, north and west, south and east.
- Weather conditions – temperature, relative humidity, wind speed, atmospheric stability and diurnal effects.
- Drought factor and seasonal effects, such as prolonged drought and soil moisture profile.
- Fuel moisture content

Strategies employed will depend on consideration of these factors during the course of the incident.

All of the inputs are variable throughout the day and therefore must be continually monitored during an incident. A sudden drop in humidity can rapidly change the Fire Danger Index and rating and give erratic fire behaviour. Changes in temperature have little or no effect on fire behaviour.

The key elements in the weather to monitor are sudden drops in Relative Humidity and an increase in wind strength. These 2 factors will have an effect on fire behaviour.

The Dew Point should also be observed when planning for night time burning out operations.

---

## 7.8 Weight of Initial Attack

Under certain conditions small incidents or incidents of low community impact may develop into devastating fires. Therefore it is critical in times of high fire danger to assign additional resources with available aircraft support to rapidly suppress wildfires whilst in a containable situation.

It is now QFRS policy where possible to assign additional resources with available aircraft support to rapidly suppress wildfires whilst in a containable situation. This approach is to remove the threat of wildfires escalating to a point beyond human control in conditions that are severe or are predicted to deteriorate.

The policy of the QFRS response during times of high fire danger (eg Wildfire Alert level 3 and 4) is to attack bushfires:

- Hard,
- Heavy, and
- Fast

Air Operations are recommended to be called in as an initial response along with a heavier number of appliances to all bushfires to quickly extinguish the fire before it has a chance to escalate. This policy would involve FireCom automatically calling in an extra appliance or two to an initial bushfire incident and air support if available. Activation of Aircraft must be in accordance with Operations Doctrine (Aircraft operations activation INCDIR 1.1)

As with all incident response, the use of RECEO, PACT and LCES will continuously identify hazards, assess the risk, prioritise objectives and apply tactics to control and resolve the incident.

From the initial response, the Incident Management System (IMS) should expand to maintain control and coordination of resources, identifying and achieving objectives.

The rapid suppression of wildfire incidents may have immediate benefits but there must be the realisation that as fires are suppressed quickly before spreading, the unaffected areas will show an increase in fuel loading. Therefore any strategy of swift and overwhelming action must be supported by land management techniques to reduce the cumulative effect of unburnt fuel loads across a region.

## 8.0 Wildfire Alert Level's Activation Table

	Alert level 1 activities	Alert Level 2 Activities (in addition to Level 1 activities)	Alert Level 3 Activities (in addition to Levels 2 & 3 activities)	Alert Level 4 Activities (in addition to Levels 2 & 3 activities)
<b>Brigades</b>	<ul style="list-style-type: none"> <li>Normal Business</li> </ul>	<ul style="list-style-type: none"> <li>All equipment checked and appliances in a complete state of readiness</li> <li>Consider ceasing hazard reduction burning</li> <li>Contact with Fire Wardens to discuss local conditions</li> <li>Brigade area familiarisation and awareness of local area conditions</li> <li>Assessment of water points (dams, creeks, pools etc)</li> <li>Update risk assessment of known hazards</li> <li>Ensure adequate supply of PPE and drinking water in store</li> </ul>	<ul style="list-style-type: none"> <li>Conduct Brigade area inspections and patrols</li> <li>Develop availability lists</li> <li>Develop team roster</li> <li>Be prepared to back up urban crews</li> <li>Be aware, two Brigade response now active</li> <li>Recommendation of 2 Brigade response to all wildfires</li> <li>Strike Teams on Standby</li> </ul>	<ul style="list-style-type: none"> <li>All members be prepared and advise First Officer of unavailability</li> <li>Fire-fighters to keep hydrated</li> <li>Where possible, have a crew on standby</li> <li>Strike Team Activated where required</li> </ul>
<b>Stations</b>	<ul style="list-style-type: none"> <li>Normal Business</li> </ul>	<ul style="list-style-type: none"> <li>All wildfire equipment checked and appliances in a complete state of readiness</li> <li>All staff to keep hydrated</li> <li>Ensure adequate supply of PPE and drinking water in store and on appliance</li> </ul>	<ul style="list-style-type: none"> <li>Desist from issuing new permits and cancel all existing permits</li> <li>Where possible, take early lunch break</li> <li>Strike Team on Standby/Activation</li> </ul>	<ul style="list-style-type: none"> <li>Re-schedule all non-essential activities</li> <li>All crews to keep hydrated</li> </ul>
<b>Group Officers</b>	<ul style="list-style-type: none"> <li>Normal Business</li> </ul>	<ul style="list-style-type: none"> <li>Contact with brigades and develop Strike Team format</li> <li>Review of Regional Plan at Group Meetings</li> </ul>	<ul style="list-style-type: none"> <li>Activate Strike Teams at Stage 1 or 2, as directed</li> <li>Keep daily contact with Area Director Rural Operations</li> <li>Group command vehicle to respond to incidents</li> </ul>	<ul style="list-style-type: none"> <li>Daily contact with Duty Officer or Inspector</li> <li>Strike Teams activated at Stage 2</li> </ul>

	Alert level 1 activities	Alert Level 2 Activities (in addition to Level 1 activities)	Alert Level 3 Activities (in addition to Levels 2 & 3 activities)	Alert Level 4 Activities (in addition to Levels 2 & 3 activities)
<b>Rural Area Office</b>	<ul style="list-style-type: none"> <li>Normal Business</li> </ul>	<ul style="list-style-type: none"> <li>Monitor Drought Index throughout Area</li> <li>Undertake weekly curing rate assessment</li> <li>Undertake weekly contact with other Agencies</li> <li>Monitor weather patterns</li> </ul>	<ul style="list-style-type: none"> <li>Ensure appropriate staff proceed to ROCC if required.</li> <li>Re-schedule all non-essential activities</li> <li>Frequent monitoring throughout the day of BOM site</li> <li>Contact with fire wardens re: Permit cancellation or local restrictions</li> <li>Deploy staff as required throughout Area</li> <li>Consider contact with all permit holders who contact Firecom</li> </ul>	<ul style="list-style-type: none"> <li>Area Director Rural Operations to ICC as per plan</li> <li>Re-schedule all non-essential activities</li> <li>Operational staff to be stationed throughout Area</li> <li>Administration staff to assist with recording of resource movements across Area</li> <li>Obtain extra Administration staff</li> <li>Re-schedule all training activities</li> <li>Cancel all Fire Permits</li> <li>Daily contact with QPWS and DPI</li> <li>Recommend fire bans</li> </ul>
<b>Area Office</b>	<ul style="list-style-type: none"> <li>Normal Business</li> </ul>	<ul style="list-style-type: none"> <li>Ensure all ICC's in zone are resourced</li> <li>Ensure adequate supply of PPE, drinking water and Class "A" foam concentrate in store at Area Office</li> </ul>	<ul style="list-style-type: none"> <li>Ensure ICC's in zone are fully operational at Stage 1 alert</li> <li>Consider re-scheduling all non-essential duties</li> </ul>	<ul style="list-style-type: none"> <li>Ensure nominated ICC's in zone are operational in accordance with Stage 1 or Stage 2 activation</li> <li>Re-schedule all non-essential duties</li> </ul>
<b>Regional Office</b>	<ul style="list-style-type: none"> <li>Normal Business</li> </ul>	<ul style="list-style-type: none"> <li>Advise all non-operational staff</li> </ul>	<ul style="list-style-type: none"> <li>Consider re-scheduling all Regional training</li> <li>Community Safety and Regional Training staff on standby (but to continue functional roles)</li> <li>Notify EMQ Area Director of fire weather</li> </ul>	<ul style="list-style-type: none"> <li>Re-schedule all Regional training</li> <li>Re-schedule Community Safety activities and building inspections</li> <li>Ensure ROCC is staffed and replacement roster completed</li> </ul>
<b>Manager Regional Training</b>	<ul style="list-style-type: none"> <li>Normal Business</li> </ul>	<ul style="list-style-type: none"> <li>Ensure ROCC is in a state of readiness and activated at Stage 1</li> <li>Notify Duty Officer at State Operations Coordination Centre</li> </ul>	<ul style="list-style-type: none"> <li>ROCC is activated at Stage 1 or Stage 2 and replacement roster completed if required</li> <li>Consider 24-hour operation to support active ICC's</li> <li>Notify Workshops/technicians</li> </ul>	<ul style="list-style-type: none"> <li>Activate ROCC at Stage 3</li> <li>Consider 24-hour operation to support active ICC's</li> </ul>

	Alert level 1 activities	Alert Level 2 Activities (in addition to Level 1 activities)	Alert Level 3 Activities (in addition to Levels 2 & 3 activities)	Alert Level 4 Activities (in addition to Levels 2 & 3 activities)
<b>Regional Manager Rural Operations</b>	<ul style="list-style-type: none"> <li>Normal Business</li> </ul>	<ul style="list-style-type: none"> <li>Normal Duties and monitoring weather and any active fires</li> <li>Liaise with SWR Management, DRO and RMRO's of adjoining Regions</li> <li>Group SMS to all Operational staff</li> <li>Ensure Regional Air Ops plans are in place</li> <li>Co-ordinate Air ops roster</li> </ul>	<ul style="list-style-type: none"> <li>Discuss weather forecasts a.m. and p.m. with SWR Management, DRO and RMRO.</li> <li>Contact ROCC as required</li> <li>Monitor any active fires</li> <li>Advise DDMG's and LDMG's</li> <li>Audit all level 2 and 3 IMT's</li> <li>Liaise with State Air Desk</li> <li>Ensure remote air base is in readiness for activation</li> </ul>	<ul style="list-style-type: none"> <li>Participate in Teleconferences</li> <li>Implement fire bans</li> <li>Re-schedule all non-essential tasks</li> <li>Ensure a roster for Air Attack supervisors is in place</li> <li>Review community warning alerts and adjust accordingly</li> </ul>
<b>Manager Strategic Development</b>	<ul style="list-style-type: none"> <li>Normal Business</li> </ul>	<ul style="list-style-type: none"> <li>Normal Duties and monitoring weather and any active fires</li> <li>Liaise with Assistant Commissioner</li> <li>Discuss weather forecasts a.m. and p.m. with SWR Management, DRO and RMRO relative to forthcoming fire conditions</li> </ul>	<ul style="list-style-type: none"> <li>In consultation with AC ensure ROCC is activated and that Ministerial documentation is readied.</li> <li>Mobilise to incident with Minister if required.</li> <li>Consider 24-hour operation to support active ICC's and ROCC</li> </ul>	<ul style="list-style-type: none"> <li>Monitor any active fires and prepare Ministerial documentation</li> <li>Participate in Teleconferences</li> </ul>
<b>Assistant Commissioner</b>	<ul style="list-style-type: none"> <li>Normal Business</li> </ul>		<ul style="list-style-type: none"> <li>Advise QAS, EMQ &amp; QPS</li> <li>Mobilise to incident with Minister if required.</li> <li>Advise Media Unit</li> </ul>	<ul style="list-style-type: none"> <li>Advise QAS, EMQ, QPS</li> <li>Mobilise to incident with Minister if required.</li> <li>Advise Media Unit</li> </ul>
<b>Firecom - Weight of Response</b>	<ul style="list-style-type: none"> <li>Normal Business</li> </ul>	<ul style="list-style-type: none"> <li>FireCom operators understand when and how to send extra appliances as part of an initial response to a bushfire incident</li> </ul>	<ul style="list-style-type: none"> <li>FireCom operators understand when and how to send extra appliances &amp; air support as part of an initial response to a bushfire incident</li> </ul>	<ul style="list-style-type: none"> <li>FireCom operators understand when and how to send extra appliances &amp; air support as part of an initial response to a bushfire incident</li> </ul>
<b>Air Operations</b>	<ul style="list-style-type: none"> <li>Fire Spotter Recon as required</li> </ul>	<ul style="list-style-type: none"> <li>Daily Recons Morning &amp; Evening</li> <li>Air Attach as required</li> </ul>	<ul style="list-style-type: none"> <li>Daily Recons Morning &amp; Evening</li> <li>Air Attach as required</li> </ul>	<ul style="list-style-type: none"> <li>Daily Recons Morning &amp; Evening</li> <li>Air Attach as required</li> </ul>

## **9.0 ACTIVATION DESCRIPTORS**

To assist with the implementation of this Plan, the following descriptors provide guidance to fire officers.

### **9.1 Strike Teams**

The following are considered the minimum numbers available. The Regional Coordinator in the Regional Fire Coordination Centre will assemble additional Strike Teams as required to manage the number and scale of wildfire incidents.

#### **9.1.1 Rural Strike Teams**

- Strike Team (5 medium attacks + 1 light attack)  
Assembly point – Fire Station
- Strike Team (5 medium attacks + 1 light attack)  
Assembly point – Fire Station
- Strike Team (5 medium attacks + 1 light attack)  
Assembly point –

#### **9.1.2 Urban Strike Teams**

Strike Teams are assembled at these identified areas within South West Region:  
Area One Strike Team will be assembled at Kitchener Street Fire Station and deployed as required.

Area Two Strike Teams are assembled at Warwick Fire Station and deployed as required.

Area Three Strike Teams will be assembled at Dalby Fire Station and deployed as required.

**Note when strike teams are deployed within the Region strike team members can expect to work 10 – 12 hour shifts and all team members should be prepared for 72 hour deployment. Once the appliances have been deployed to an Incident, change over**

**Staff may be transported by bus to the Incident.**

#### **Stage 1 Activation**

- Urban Strike Teams - Team Leader and crews notified by Regional Coordinator and placed on standby
- Rural Strike Teams - Team Leader and crews notified by Area Director Rural Operations and placed on standby/alert

#### **Stage 2 Activation**

- Strike Teams mobilised as required and placed on standby at designated locations.
- For Rural Strike Teams, it will be in accordance with 9.1.1, above.

- For Urban Strike Teams, it will be at Anzac Ave, Goondiwindi, Dalby or Warwick Fire Stations. This will be determined by the Assistant Commissioner and the Regional Coordinator depending upon the destination of the Strike Team.

## **9.2 Incident Control Centres**

South Western Region has 6 Incident Control Centres (ICC's) capable of managing Level 3 wildfire incidents. These are located at Highfields, Crows Nest, Warwick, Stanthorpe, Millmerran and Tara (Refer Sections 10.0 and 11.0). Supporting these Centres are numerous Incident Control Centres capable of managing Level 2 wildfire incidents. Level 1 wildfire incidents will be managed from mobile resources.

There are two stages of activation for the 6 pre-determined ICC's, being Stage 1 and Stage 2. Activation is by the Team Leaders, after advice received from the Regional Coordinator and Area Director Rural Operations (based on weather conditions and fire activity),

### **Stage 1 Activation**

Team Leaders ensure that their ICC's are fully resourced with equipment and staff identified to assume functional roles in an Incident Management Team. Refer to the Table in Section 7.5 for instances when this occurs.

### **Stage 2 Activation**

The pre-determined ICC's are operational with staff and volunteers. This level of response can be for going fires or as a pre-emptive action due to Wildfire Alert Levels 2 or 3 being determined as required to be activated. Each of these levels of activation may be at either high or low levels. Refer to the Table in Section 7.5.

### **9.2.1 Activation of pre-determined Incident Control Centres**

A pre-determined ICC will be activated:

- When two or more Incident Control Centres (fixed or mobile) are operating in a zone covered by a pre-determined ICC.
- When an incident escalates to Level 2 or Level 3.
- At the direction of the Assistant Commissioner, Area Directors or the Regional Fire Coordination Centre.

## **9.3 Regional Operations Coordination Centre (ROCC)**

### **9.3.1 Activation of ROCC**

There are three stages of activation for Regional Operations Coordination Centre (ROCC), being Stage 1, Stage 2 and Stage 3. Activation is by the Assistant Commissioner and Regional Manager Rural Operations and is in accordance with the Wildfire Alert Level criteria.



### **Stage 1**

The Regional Coordinator, Planning Officer and RMRO are liaising and monitoring weather conditions and wildfire activity in the Region. This will be in accordance with the Wildfire Alert Level criteria. Refer to Table in Section 7.5. This does not necessarily require the ROCC room to be opened.

### **Stage 2**

The ROCC is activated with 4 staff assigned to monitor and support incidents or in preparation of fire outbreaks due to predicted fire weather. The staff should consist of:

- Manager Regional Training
- Manager Strategic Development
- Planning Officer
- Admin Officer

This will be in accordance with the Wildfire Alert Level criteria. Refer to Table in Section 7.5.

### **Stage 3**

The ROCC is fully operational with a minimum of 4 staff, all with specified roles. Refer Section 12.5 for details on the management of the ROCC.

This will be in accordance with the Wildfire Alert Level criteria. Refer to Table in Section 7.6.

**Regional Manager Rural Operations to have All Air Observers in Southwest Region on standby**

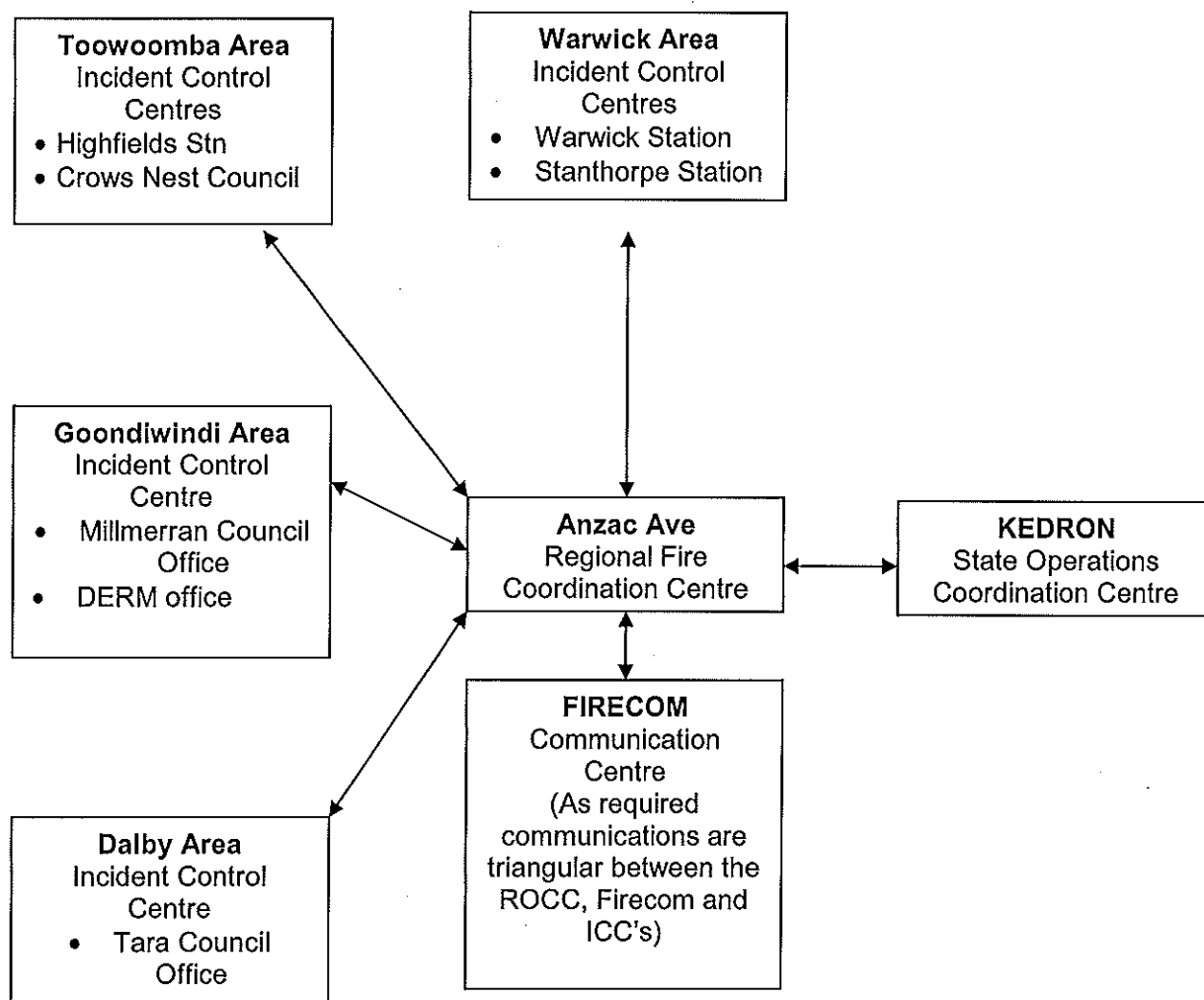
## 10.0 REGIONAL INFRASTRUCTURE

To provide the appropriate levels of command, control and coordination of wildfires, the following infrastructure has been developed:

- Pre-determined Incident Control Centres (ICC's), located at:
  - Highfields Fire Station
  - Crows Nest (Council Office)
  - Warwick Fire Station
  - Stanthorpe Fire Station
  - Millmerran (Council Office)
  - Tara (Council Office)
- Regional Operations Coordination Centre, located at Regional Training Anzac Avenue

### 10.1 Overview

The following is an overview of the regional infrastructure.



## **11.0 PRE-DETERMINED INCIDENT CONTROL CENTRES**

It is expected that wildfire activity will commence at the lower, or Level 1, stage of incident progression. Statistics indicate that approximately 96% of wildfires will not progress beyond this level of activity.

However, depending upon the weather conditions, fuel load and curing rate, approximately 3% will progress to Level 2 stage. In this stage, the appropriate Incident Control Centre should be activated to manage the incident.

Further, approximately 1% of wildfires will progress to the Level 3 stage. In the event of this occurring, the Incident Control Centre will either be discontinued or revert to a Divisional Command and control will be transferred to one of the pre-determined ICC's capable of managing a Level 2/ 3 incident.

### **11.1 Geographical areas managed by pre-determined ICC's**

When one of the 6 ICC's is established, it will manage all wildfire activity in the local authority's area in which it is located. Responsibility for managing wildfires in specific geographical areas is the relevant Command Area Director and/or Area Director Rural Operations. Coordination of urban and rural resources will be used to protect life, property and the environment, regardless of whether the wildfire is in an urban or rural area.

#### **11.1.1 Toowoomba ICC ( Highfields Station)**

The Toowoomba ICC will manage Level 2 and 3 wildfires throughout Area One Toowoomba, including the localities of:


- Toowoomba Area
- The Area identified as the Escarpment Area
- Crows Nest area
- Cambooya area
- Rosalie area

#### **Team Leader**

- Area Director, Area 1 Toowoomba

#### **Staging**


- Highfields Fire Station.

Highfields ICC IMT	VHF repeater	Fireground UHF	UHF SES (portable repeater)	ICC Contact Numbers
Fireground to ICC	69 67 71	Talk around and 1/3	11, 12	
Incident Controller				
Operations				
Planning				
Logistics				
ICC Fax				

Email: [iccsouthwesttoow@emergency.qld.gov.au](mailto:iccsouthwesttoow@emergency.qld.gov.au)

User name: iccsouthwesttoow

Password: iccsouthwesttoow

QFRS Rural Brigades	Fire Ground VHF	Contact
Cabarlah	12	
Peachy Groomesville	19	
Wagners Flat	19	
Crows Nest	17	
Goombungee	20	
Gowrie Little Plain	15	
Cambooya	20	
Anduramba	15	
Cooyar Town	16	
Cooyar District	13	
Southbrook Linthorpe	13	
West Pittsworth	15	
Irongate Rossvale	18	
Gowrie Mountain & Wagners Flat	19	
Peranga	12	
Hampton	13	
Ravensbourne	13	
Pinelands	14	
Gomaren	16	
Haden & District	18 see above	
Maclagen	19	
Mount Binga	20	
Emu Creek	21	

QFRS Urban Brigades	Fire ground UHF	Voting
Kitchener Street Station	CH 1/3	82 (46 & 61)
Anzac Avenue Station	CH 1/3	82 (46 & 61)
Pittsworth Station	CH 1/3	
Oakey Station	CH 1/3	

Goombungee Station	CH 1/3	
Crows Nest Station	CH 1/3	
Highfields Station	CH 1/3	

Other Agencies	Radio Channel	Contacts
QPWS	Ch 111 vhf	
Toowoomba Office		
DPI Forestry Pechey	(100 ch/1000ch) VHF 85/123 114	
Yarraman	VHF 86/125	
SES (SES Ch's 11&12) Repeaters	UHF 194/ 195	
Toowoomba	UHF 2(5,1,3) 202	
Pittsworth	UHF 5 (1,3) 205	
Crows Nest	UHF 4 (5) 204	
Cambooya	UHF 1(2,3) 201	
Rosalie	UHF 5 (2,4) 205	
CrowsNest Council service centre	VHF 90	
Cambooya Council service centre	VHF 93	
Police		
QPS Comms Toowoomba	Ch 34 (Repeater)	

UHF repeaters – Mt Kynock 46  
 Picnic Point 61  
 Bald Hill 60

VHF repeaters – Anduramba (Local Repeater 71)  
 Picnic Point (Local Repeater 69)  
 Pittsworth (local Repeater 67)  
 Perseverance (Local Repeater 35)

### 11.1.2 Warwick ICC (Warwick Training Room and Area Office)

Warwick ICC will manage Level 2/3 wildfires throughout Warwick Shire, including the localities of:

- Allora;
- Clifton;
- Killarney;
- Inglewood (minimal Fire ground use Forestry VHF 115)
- Warwick.

Warwick ICC IMT	VHF	Fireground UHF	UHF SES (portable )	ICC Contact Numbers
Fireground to ICC	66,61,67,65	1/3	11, 12	Sat Phone (CUG)
Incident Controller				
Operations				
Planning				
Logistics				
ICC Fax				

**NB Last 4 digits of phone number is code for displan line activation**

Email: [iccswwarwick@emergency.qld.gov.au](mailto:iccswwarwick@emergency.qld.gov.au)

User name: iccswrwarwick

Password: iccswrwarwick

### Team Leader

- Area Director, Warwick and nominated Station Officer, plus Regional Support.

### Staging

- Can be facilitated at Warwick Fire Station or local Council facility.

QFRS Urban Brigades	VHF ( local repeater)	Fireground UHF	UHF	Channel 83 - Voting
Allora	66 / 61	1/3/5 42, 44 talk around	83	42, 44
Clifton	66 /61	1/3/5	82,83	46, 61 and 42, 44
Killarney	66 /65	1/3/5 42, 44 talk around	83	42, 44
Inglewood	61	1/3 54 talk around	54	NA
Warwick	66	1/3 42, 43, 44 talk around	83	42, 43, 44

UHF Repeater sites: Bacons Hill (42), Passchendale (43) Bony Mountain (44), Bracker Forest (54)

VHF Repeater site: Braeside Ch 66, Pittsworth 67, Karara 61, Killarney 65

QFRS Rural Brigades	Firecom	UHF CB	Fireground VHF	Contacts
Massie	44	7	12	John Davis [REDACTED] Tom Willet Mob [REDACTED]
Allora	44	7, 20	18	Don Burge [REDACTED] Len Chandler [REDACTED]
Freestone & District	44	5, 7	21	Alan Payne [REDACTED] Rod Austin [REDACTED]
Leslie			16	Tim Johnson [REDACTED] E Benz [REDACTED]
Pratten Bony Mountain	44	20	11	Jeff Clegg H 4 [REDACTED] Mob [REDACTED] Mark Paroz [REDACTED]
Karara Leyburn	44	9, 20	15	Michael Welsh [REDACTED]
Leyburn Town	44		19	Stephen Evans [REDACTED] Robert Blackett [REDACTED]
Greymare	44	20	17	Don Marshall [REDACTED]

South Western Region Wildfire Operational Plan 2009-2010

				Mal Marshall [REDACTED]
The Glen	44		19	Mark Saunders [REDACTED]
Wildash	44		13	John Mayer [REDACTED] Peter Keogh [REDACTED]
Swan & Emu Creek	44		15	Graham Hoffman [REDACTED] Robert Bradford [REDACTED]
Killarney District	44	11	17	Bruce Gustafson [REDACTED] Rod Peterson [REDACTED]
Dalveen	44		18	Jim Mitchell [REDACTED] Nigal Shatte [REDACTED]
Gladfield Maryvale	44	7, 14	19	Mal Stacey [REDACTED]
Warwick Group/Support	44	20, 10	66, 19	Alan Payne [REDACTED] Mal Stacey [REDACTED] Michael Welsh [REDACTED]

Other Agencies	Radio Ch (100/1000)	Contacts
Forestry Passchendale	VHF 75/111	Howard Ward [REDACTED]
Inglewood	VHF 79/115	Mark Wren [REDACTED]
QPWS	VHF 118,119,120	Martin Ambrose [REDACTED]
SES Warwick	SES UHF 1, 11, 12 Firecom UHF 94=SES 11 95=SES 12 201= SES 1	[REDACTED] John Newly [REDACTED]
Southern Downs Council Warwick Council service centre	VHF 92 (QRFS INC CH. 98/92)	[REDACTED] Peter See- Dir. Eng. Services [REDACTED] Brian Weeks - Tech. Officer [REDACTED]

Clifton Council service centre	VHF	[REDACTED] John keen [REDACTED] Ron Gurney (2IC) [REDACTED]
Goondiwindi Regional Council Inglewood service centre	VHF	Ian Badham – Branch Manager [REDACTED] Peter Crisp – Dist Engineer [REDACTED]
QAS Warwick	VHF 52	[REDACTED] Geoff Dunning [REDACTED]
Police Warwick	UHF 90 (190)	[REDACTED] District Inspector [REDACTED]

### 11.1.3 Stanthorpe ICC (Stanthorpe Fire Station)

The Stanthorpe ICC will manage Level 2/3 wildfires throughout the Stanthorpe Shire, including the localities of:

- Stanthorpe;
- Happy Valley;
- Sugarloaf;
- Wallangara; and
- Ballendean.

Stanthorpe ICC IMT	VHF (Mt Dillion and Christies Target, local repeaters)	Fireground UHF	UHF SES (portable repeater)	ICC Contact Numbers
Fireground to ICC	58, 59, 63	Talk around and 1/3	11, 12	Sat Phone (CUG) [REDACTED]
Incident Controller				[REDACTED] and IC normal phone
Operations				[REDACTED]
Planning				[REDACTED]
Logistics				[REDACTED]
ICC Fax				[REDACTED]

Email [REDACTED]  
User name: [REDACTED]  
Password: [REDACTED]

UHF Repeaters: Mt McKenzie (40), Mt Marley (41), Passchendale (43)

VHF Repeaters: Christies Target 58, Mt Dillon 59, Amiens 63



### Team Leader

- Area Director Warwick and nominated Station Officer plus Regional Support.

### Staging Area

At the rear car park of Stanthorpe Fire Station and Council depot or shopping centre car park if required.

QFRS Rural Brigades	Fireground VHF	Contact
North Granite Belt	21	Michael Caitlin [REDACTED]
Drumsleed	13	Gordon Smith [REDACTED]
Applethorpe	14	Scott Rogers [REDACTED]
Broadwater-Amiens	17	Howard Sweet [REDACTED]
Mallow	20	Edward Boyce [REDACTED]
Sugarloaf	16	Peter Neville [REDACTED]
Thorndale Glen Applin	12	David (Ian) Townsend [REDACTED]
Severnlea West	11	Tony Scuderi [REDACTED]
Glenlyon	15	William (John) Pratt [REDACTED]
Severnlea East and Mt Tully	11	Michael Boucher [REDACTED]
Eukey	19	Robert Pugno [REDACTED]
Ballandean	13	Allan Taylor [REDACTED]
Wyberba	18	Greg Saxby [REDACTED]

QFRS Urban Brigades	Fireground UHF	UHF	Voting
Stanthorpe	1/3	41, 43	NA
Wallangarra	1/3	40	NA

Other Agencies	Radio Ch	Contacts
Forestry Passchendale	VHF111	Howard Ward [REDACTED] Mob [REDACTED]
QPWS Girraween	VHF 111, 113 UHF 12	[REDACTED] John Cowburn [REDACTED] Jolene McLellan [REDACTED]
SES Stanthorpe	UHF 10 (210)	[REDACTED]

Southern Downs Regional Council Stanthorpe	91	<div style="background-color: black; width: 100px; height: 1.2em; margin-bottom: 5px;"></div> day time  After hours contact <div style="background-color: black; width: 100px; height: 1.2em;"></div>
QAS Stanthorpe	VHF 43 VHF 49 (Passchendale)	<div style="background-color: black; width: 100px; height: 1.2em; margin-bottom: 5px;"></div> Bill Martin (OIC)
Police Stanthorpe	UHF 90 (190)	<div style="background-color: black; width: 100px; height: 1.2em; margin-bottom: 5px;"></div> Darryl Coleman (OIC)

#### 11.1.4 Millmerran ICC

Millmerran ICC will manage Level 2/ 3 wildfires throughout the Shire of Millmerran in the localities of:

- Scrubby Creek
- Burnt Brigalow
- Captains Mountain
- Yandilla
- Forest Pines
- East Millmerran
- North Millmerran
- Bringalilly & Weir River
- Leyburn Town
- Pampas
- South Millmerran

#### Team Leader

Area Director Goondiwindi and Auxiliary Captain and Rural Operations Toowoomba Area Office.

#### Staging Area

Millmerran Fire Station

Rural Brigades	Fireground VHF	Contact
Scrubby Creek	11	Dennis Dwyer <div style="background-color: black; width: 150px; height: 1.2em;"></div>
Burnt Brigalow	12	David Anderson <div style="background-color: black; width: 150px; height: 1.2em;"></div>
Captains Mountain	13	Paul Antonio <div style="background-color: black; width: 150px; height: 1.2em;"></div>
Yandilla	14	Marcus Salomon <div style="background-color: black; width: 150px; height: 1.2em;"></div>
Forest Pines	15	David Downing <div style="background-color: black; width: 150px; height: 1.2em;"></div>
East Millmerran	16	Lindsay Simmons

South Western Region Wildfire Operational Plan 2009-2010

North Millmerran	17	Keith Lindenmayer
Bringalilly	18	John (Graham) Chandler
Weir River	18	Peter Markham
Leyburn Town	19	Stephen Evans
Pampas	20	Michael Hegarty
South Millmerran	21	Philip Thornton

<b>Urban</b>	<b>Fireground UHF</b>	<b>UHF</b>
Millmerran	1/3	62

<b>Other Agencies</b>	<b>Radio Ch (100/1000)</b>	<b>Contacts</b>
Natural Resources & Minerals Previously DPI	80/118	Wayne Kapernick
Western Creek (Repeater)	80/118	
	82/115 – 119 (RTA)	
Karara (Repeater)	76/112	
	78/110 – 113 (RTA)	
<b>Police</b>	UHF 90 (190)	SA Ryan
<b>QPWS</b>		Martin Ambrose
<b>Millmerran Service Centre Council</b>		
Overseer	WL Johnson	
<b>SES Local Controller</b>	WL Johnson	

<b>QAS</b>	Ian Thompson	
<b>Millmerran Hospital</b>	P Le Griffon	
Disaster Management Officer	R Cox	
Millmerran & Dist Community Support Services	G D Fogarty	


UHF repeaters: Mt Domville 62

VHF repeaters: Captains Mtn 57

Email: [REDACTED]

User name: [REDACTED]

Password: [REDACTED]

Millmerran ICC IMT	VHF	Fireground UHF	UHF SES (portable repeater)	ICC Contact Numbers
Fireground to ICC	118	Talk around and 1/3	11, 12	Sat Phone (CUG)
Incident Controller				
Operations				
Planning				
Logistics				
ICC Fax				
Spare No's				
Line 4				

**NB. LAST 4 DIGITS OF PHONE NUMBER ARE DISPLAN CODE NUMBERS TO  
ACTIVATE PHONE**

**AIRSTRIPS \ WATER SUPPLIES \ STAGING AREAS \ SAFEHAVENS**

<b>SITE</b>	<b>TYPE</b>	<b>ADDRESS</b>	<b>GPS COORDINATES</b>
Millmerran Airport	Airstrip	Cecil Plains Road	S27.86362 E151.27574
SSAA Phil Commens [REDACTED]	Airstrip & Staging Area	Moffat Road Rural No. 10125	S27.98541 E151.09818
Repeater Site		Blackwell Road Rural No. 113	S27.92934 E151.18318
Water Supply 1	Dam Heliattack	Blackwell Road Rural No. 113	S27.98652 E151.09335
Water Supply 2	Dam Heliattack	Blackwell Road Rural No. 113	S27.98768 E151.08023
Water Supply 3 Harry Dislers [REDACTED]	Dam Heliattack	Kimberley Fields Drive, Lot 33	S27.97187 E151.03027
	Alternate supply  Safehaven		S27.97358 E151.02925
Water Supply 4 Mr Dawson [REDACTED]	Dam Heliattack	Lot 16 Rd No. 257, Rosella Avenue, Forest Pines	S27.97692 E150.95700
Water Supply 5	Bore & tanks	Poola Macca Drive, Scrubby Creek	S27.98496 E151.06721
Water Supply 6	Bore & tanks	Cnr Thyme Rd & Basil Dr, Forest Pines	S27.96258 E151.01520
Scrubby Creek Community Hall	Staging Area	Cnr Primrose Dr & Camellia Crt, Scrubby Creek	S27.97834 E151.05652
Forest Pines Rural Brigade	Staging Area	Cnr Gore Hwy & Rosella Av, Forest Pines	S27.97970 E150.98116

### 11.1.5 CROWSNEST ICC

Crowsnest ICC will manage Level 2/ 3 wildfires throughout the localities of Crowsnest, parts of Rosalie in the localities of:

- Northern part of Toowoomba escarpment
- Hampton
- Ravensborne
- Cooyar
- Mt Binga
- Emu Creek

#### Team Leader

Area Director Rural Operations supported by the Crowsnest Rural Fire Brigade Group Officer

#### Staging Area

Crowsnest Showgrounds

QFRS Rural Brigades	Fire Ground VHF	Contact
Cabarlah	12	
Peachy Groomesville	19	
Wagners Flat	19	
Crows Nest	17	
Goombungee	20	
Anduramba	15	
Cooyar Town	16	
Cooyar District	13	
Irongate Rossvale	18	
Gowrie Mountain & Wagners Flat	19	
Peranga	12	
Hampton	13	
Ravensbourne	13	
Pinelands	14	
Gomaren	16	
Haden & District	18 see above	
Maclagen	19	
Mount Binga	20	

QFRS Urban Brigades	Fire ground UHF	Voting
Goombungee Station	CH 1/3	Ch 60
Crows Nest Station	CH 1/3	Ch 60
Highfields Station	CH 1/3	V82

Crowsnest Rural Fire Brigade Timber Road Crowsnest Ph 4698 1133

Other Agencies	Radio Ch (100/1000)	Contacts
Forestry Pechey	Ch123 vhf	Office [REDACTED] RIC mob [REDACTED] David Adam [REDACTED] Greg Stuckey [REDACTED]
Police		[REDACTED]
Crowsnest Council	VHF 90	
SES	UHF 204	Les King [REDACTED] [REDACTED]

UHF repeaters: Picnic Point Ch 61, Mt Kynock Ch 46, Bald Hill Ch 60,  
Perserverance Ch 26

VHF repeaters: Mt Perserverance Ch 35, Anduranba Ch 71, Picnic Point Ch 69

**Crowsnest Incident Control Centre**  
**Toowoomba Council Building**  
**Crowsnest**

Crowsnest ICC IMT	VHF	Fireground UHF	UHF SES (portable repeater)	ICC Contact Numbers
Fireground to ICC	Ch35/71	Talk around and 1/3	11, 12	
Incident Controller				[REDACTED]
Operations				
Planning				
Logistics				
ICC Fax				
Data lines Ops				
Data lines Logs				
Data line IC				

### Council chambers layout

**The training room**  
**The Chambers**  
**The meeting Room**

**Operations and Planning**  
**Logistics**  
**Incident Controller**

**Building entry key**  
**IT/Comms assistance**

Janelle Schmaling  
Michael Swindells  
Brent Moore

Email: [REDACTED]

### 11.1.6 TARA ICC

Tara ICC will manage Level 2/ 3 wildfires throughout most parts of the Dalby Regional Council.

A backup location to set up an ICC is at the Council Chambers in Tara. Contacts for the use of this building.

Doug Bogoure

Office

Mob

Home

#### Team Leader

- Area Director Dalby, and Area Director Rural Operations Toowoomba and support staff

#### Staging Area

- Tara Showgrounds

QFRS Rural Brigades	Fireground VHF	Contact
Bennett's School Road	13	
Wieambilla South	17	
Weranga Goramba	15	
Tolmah	16	
Kogan Condamine	18	
Condamine	19	

QFRS Urban Brigades	Fireground UHF	Voting
Tara	1/3	

Other Agencies	Radio Ch (100/1000)	Contacts
Forestry		
DPI Inglewood	77/115	Mark Wren
DPI Merinda	78/116	
DPI Karara	76/112	
DPI Western Creek	80/118	
DPI Kumbarilla	81/119	
DPI Bunya Mountains	83/120	
Forestry Talk Around (RTA)	78/110 – 113 (RTA) 82/ 115 – 119 (RTA) 84/ 120 – 121 (RTA)	
SES	87/122-127 RTA	
Tara Shire Council		
Police	UHF 90 (190)	

UHF Repeaters: Nil in area closest Mt Kiangarow 50

Bennett RFB Tara shed Chinchilla 51

Miles 52

Dalby 48 (NIS)

VHF Repeaters: Bennett RFB Shed Tara 27. Bunya Mtns 73

Email:



## **12.0 REGIONAL OPERATIONS COORDINATION CENTRE**

The Regional Operations Coordination Centre (ROCC) forms an integral part of wildfire management in South Western Region. The ROCC can assist Incident Controllers to meet incident management resourcing issues, and to assist regional requirements to report the current status of all incidents to the State Operational Coordination Centre (SOCC). These functions directly assist in managing demands placed on individual Incident Controllers by the complexity of the incidents being managed.

### **12.1 Purpose of Regional Operations Coordination Centre (ROCC)**

The purpose of the ROCC is to:

- Provide strategic direction and operational support to IMT's operating within South West Region; and
- Receive and supply relevant information from/to the SOCC) and Assistant Commissioner (see flowchart in Section 12.6 and refer to Operations Doctrine).

### **12.2 Location of ROCC and resources**

The Regional Operations Coordination Centre is located at:  
Regional Training  
201 Anzac Avenue

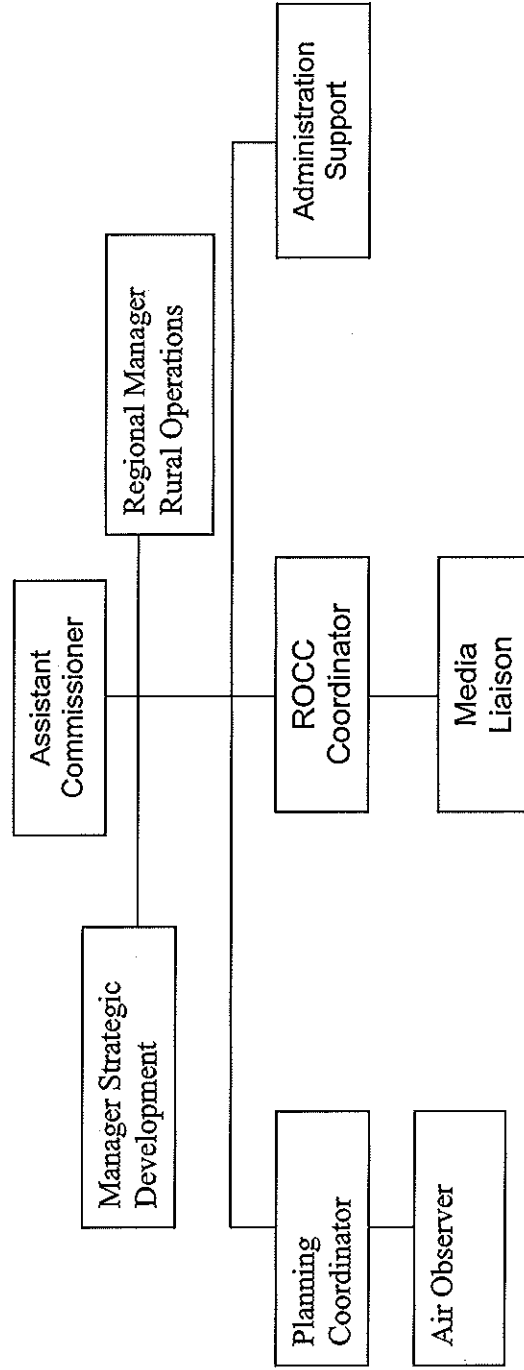
Coordinator

(Teleconferencing Facility)

This location also provides access to computers linked to Firecom Brisbane, Firecom Southeast, Firecom North coast and Firecom South West to enable the ROCC team to monitor all available resources.

Also available are desktop computers, scanner, maps of South West Region, Regional LSOPS, VHF and UHF radio capability all forms manual and electronic and stationery.

### 12.3 ROCC Team



## 12.4 Staffing of ROCC

The following teams will be used when Stage 3 activation of the ROCC occurs.

Role	Team 1
Regional Coordinator	Manager Strategic Development
Media	Community Liaison Officer
Ministerial Liaison	
Other Agency Liaison	
Planning Coordinator*	Planning Officer
Management Support	
Administration	Admin Officer Regional Training
Incident Data Entry	
GIS	
Resources	
Information	
Operations/Liaison Coordinator	Area Director Toowoomba- Area 1
SOCC Liaison	
FireCom Liaison	
ICC Liaison	
ICC Liaison	
ICC Liaison	
Logistics Coordinator	Regional Admin support As required
IT/Comms Support	Manager Regional Communications
Finance	
Supplies/Resources	
Catering	

Regional Manager Rural Operations (RMRO) to audit and mentor IMT's and report to the Regional Co-ordinator at the ROCC on future requirements of resourcing for incidents and operational effectiveness.

## **12.5 Roles & Responsibilities of ROCC Team Members**

*Refer to the Operational Guide # 3 for details on the management structure and roles of the ROCC. NOTE – the Optimum, Standard and Basic examples provided in Operational Guide # 3 to allow for different resources available in each Region and to allow the ROCC to grow and contract depending on the level of incidents occurring.*

### **12.5.1 Regional Coordinator**

The Regional Coordinator reports directly to the Assistant Commissioner QFRS.

The functional duties of the Regional Coordinator include the following tasks:  
*Refer to the Operational Guide # 3 for details on the management structure and roles of the ROCC.*

### **12.5.2 Regional Planning Coordinator**

The functional duties of the Regional Planning Coordinator include the following tasks:  
*Refer to the Operational Guide # 3 for details on the management structure and roles of the RFCC*

- **Administrative Support (reports to Planning Coordinator)**

The functional duties of the Administrative Support include the following tasks:

*Refer to the Operational Guide # 3 for details on the management structure and roles of the ROCC*

### **12.5.3 Regional Operations/Liaison Coordinator**

The functional duties of the Regional Operations/Liaison Coordinator include the following tasks:  
*Refer to the Operational Guide # 3 for details on the management structure and roles of the RFCC*

### **12.5.4 Regional Logistics Coordinator**

The functional duties of the Regional Logistics Coordinator include the following tasks:  
*Refer to the Operational Guide # 3 for details on the management structure and roles of the ROCC*

<p>NOTE – these are the suggested minimum positions in the ROCC as shown in the basic example in Operational Guide # 3. Please feel free to add more positions as may be required for your Region but only as per those outlined in Operational Guide # 3.</p>
--

### **12.5.5 Communications Officer**

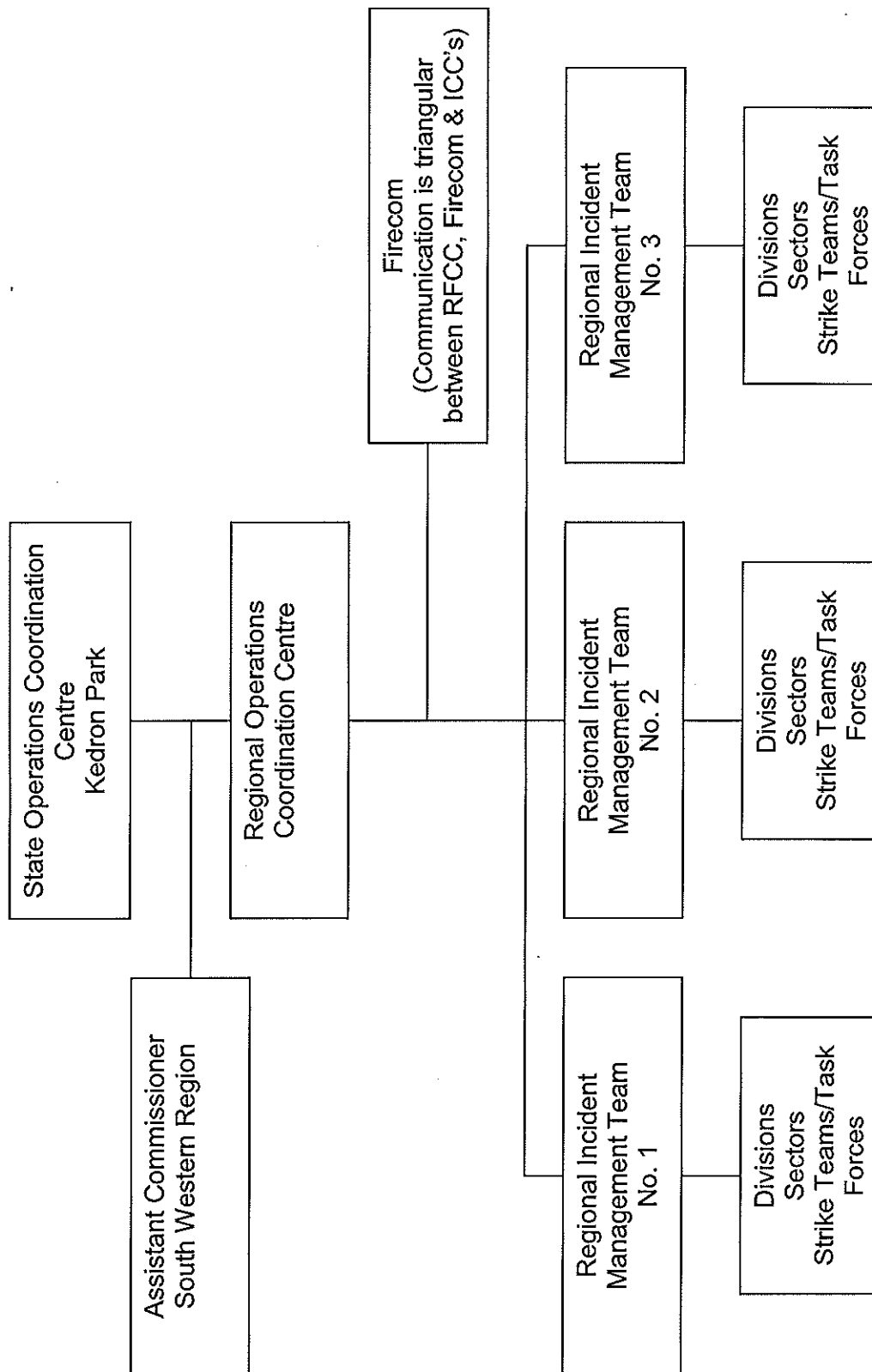
### **12.5.6 Data Support Officer**

### **12.5.7 Agency Liaison Officer**

### **12.5.8 Finance Officer**



## 12.6 Reporting & Communications Structures



## **12.7 De-Commissioning of ROCC**

- (a) The Assistant Commissioner is to be advised that ROCC is closing down
- (b) Make an entry on the general log that ROCC is being deactivated
- (c) Make up Room and return all equipment to storage areas.
- (d) Print out required data from the electronic white board. Print and put with hard copy of general log attached.
- (e) Hard copy documentation sent to RHQ for archiving and future reference
- (f) Clean off any unnecessary details from white board and table top
- (g) Return all keys to Regional Training
- (h) Clean up room and return condiments to storage cupboard.
- (i) Restock regional PPE supplies as required

## **12.8 Preparedness and Maintenance of ROCC**

In order to ensure the ROCC is in an operational mode at all times, it is essential that the ROCC is checked on a regular basis and the process of checking is recorded.

This will be completed once every three months (or more often in times of adverse weather conditions).

The Manager Regional Training, in conjunction with the Planning Officer will manage these duties

The purpose of this preparedness and maintenance procedure is to:

- (a) Test the functionality of all equipment; and
- (b) Provide a competency maintenance program for all personnel who may be deployed to the ROCC
- (c) To periodically test the procedures in this document, including those that are outlined in the Regional Operations Coordination Centre Activation Plan.

These directives ensure the Assistant Commissioner's priorities of maintaining an efficient and effective operational response capacity is in place and managed.

## **13 Regional Teams**

### **13.1 Incident Management**

The following positions have been identified as pre-planned Incident Management Teams

#### **Team 1**

Area Director Rural Operations Toowoomba  
Manager Community Safety  
Area Director Dalby  
Area Training and Support Officer Rural Operations Toowoomba  
Area Director Warwick  
Admin Officer  
Local Rural Fire Brigade rep  
Other agencies as required

#### **Team 2**

Area Director Rural Operations Roma  
Area Director Goondiwindi  
Regional Training Officer  
Izone Officer  
Area Director Roma  
Admin Officer  
Local Rural Fire Brigade rep  
Other agencies reps as required

#### **Support Staff to Team 1 and 2**

Manager Regional Training  
Area Director Charleville  
Brigade Training and Support Officer Rural Operations Toowoomba x 2  
Safety assessment Officer x 2  
Regional Training officers x 2  
Building assessment officer x 2



## **14 Air Operations.**

### **14.1**

The Southwest Region Air operations is managed and co-ordinated by the Regional Manager Rural Operations (RMRO).

All requests for air operations must follow the correct procedure - Incident Directive 1.3

The RMRO will take pre-emptive actions during the fire season and dispatch an air observer to provide quick detection of any wildfires. In these cases the air observer will communicate directly with Firecom in the absents of an IMT operating. The air observer will also advise Firecom Southwest of the aircrafts flight plans.

In the event that an ICC is established and functioning, the aircraft will communicate with the incident controller for tasking.

### **14.2**

The team of air observers in Southwest Region is as follows:

Warren Buckley	SO Toowoomba
Scott Frame	Senior Fire Fighter Toowoomba
Mark Haddow	Senior fire fighter Toowoomba
Col Neal	ATSO Roma
Dave Downing	First Officer Forest Pines Rural Fire Brigade
Peter Crisp	Volunteer fire fighter
John Boucher	Volunteer fire fighter

Air Attack supervisors

Warren Buckley  
Col Neal

### **14.3**

Equipment.

A cache of equipment has been developed to support the establishment of an airbase. Currently this is in a trailer located at the ROCC.

An aircraft radio pack is located in the Roma Area office.

An Air Observer cache is located in the cabinet in the Regional Training Kitchen. Access is via the external door using the keypad. Each observer has a key for the cabinet.

## **15. Communication Plans**

The following are radio communication plans assigned to each of the designated Incident Control Centers

Toowoomba (Highfields)

Warwick

Stanthorpe

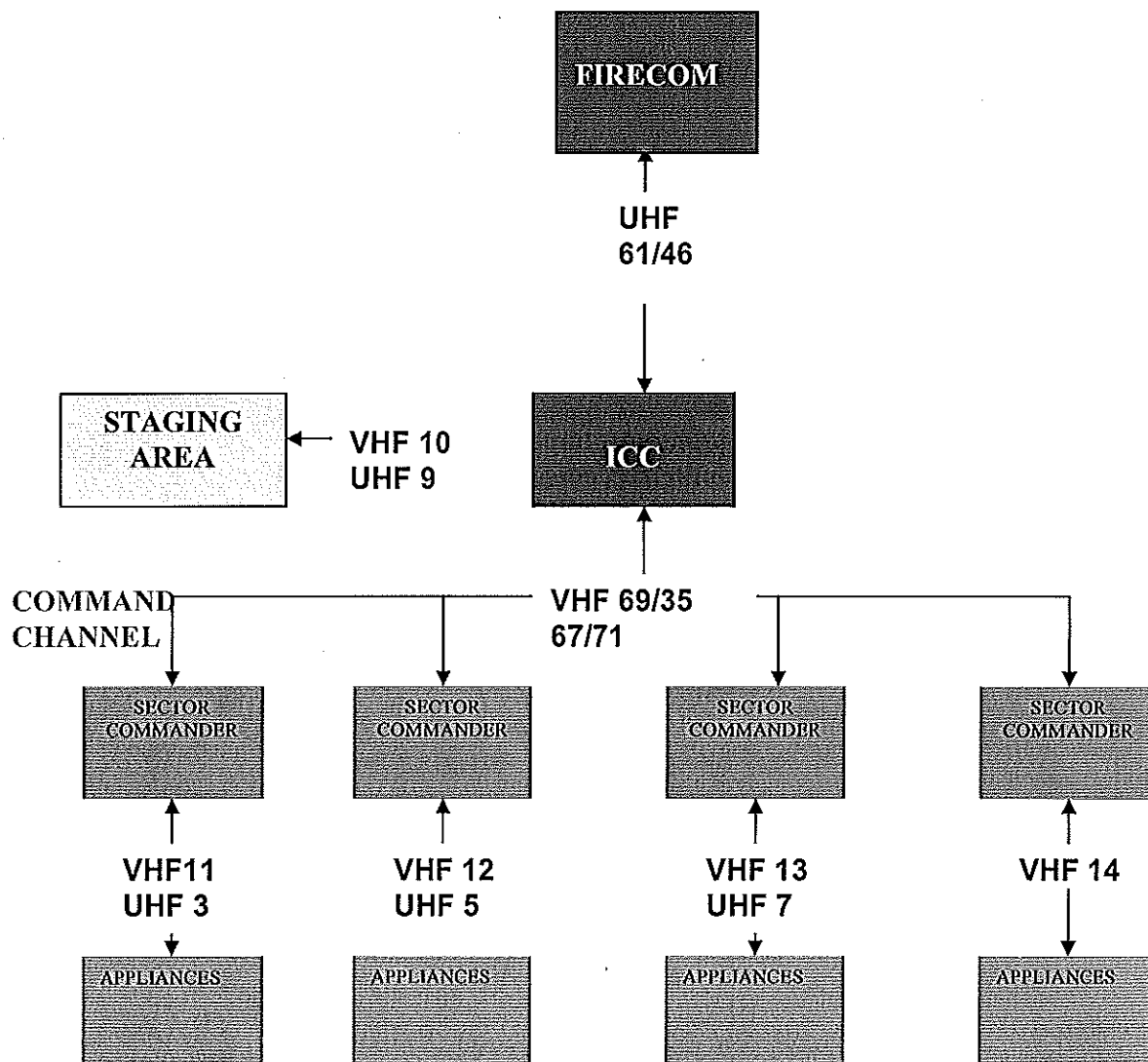
Millmerran

Tara

Crowsnest



# Local Wildfire Fireground Communications Plan South Western Region – Highfields ICC



## Command Channels

VHF 69 Picnic Point Repeater

VHF 35 Perseverance Repeater

VHF 67 Mt Parker, Pittsworth

VHF 71 Anduramba

## Alternative Command Channels

Forestry VHF 114 Pechey

Forestry VHF 123 Pechey

## Alternative Fireground Channels

VHF 15, VHF 16, VHF 17, VHF 18

VHF 19, VHF 20, VHF 21, VHF 22

Portable UHF Fireground repeater channels 2, 4, 6 or 8 (simplex channels 1, 3, 5 or 7 cannot be used if these repeater channels are utilised)

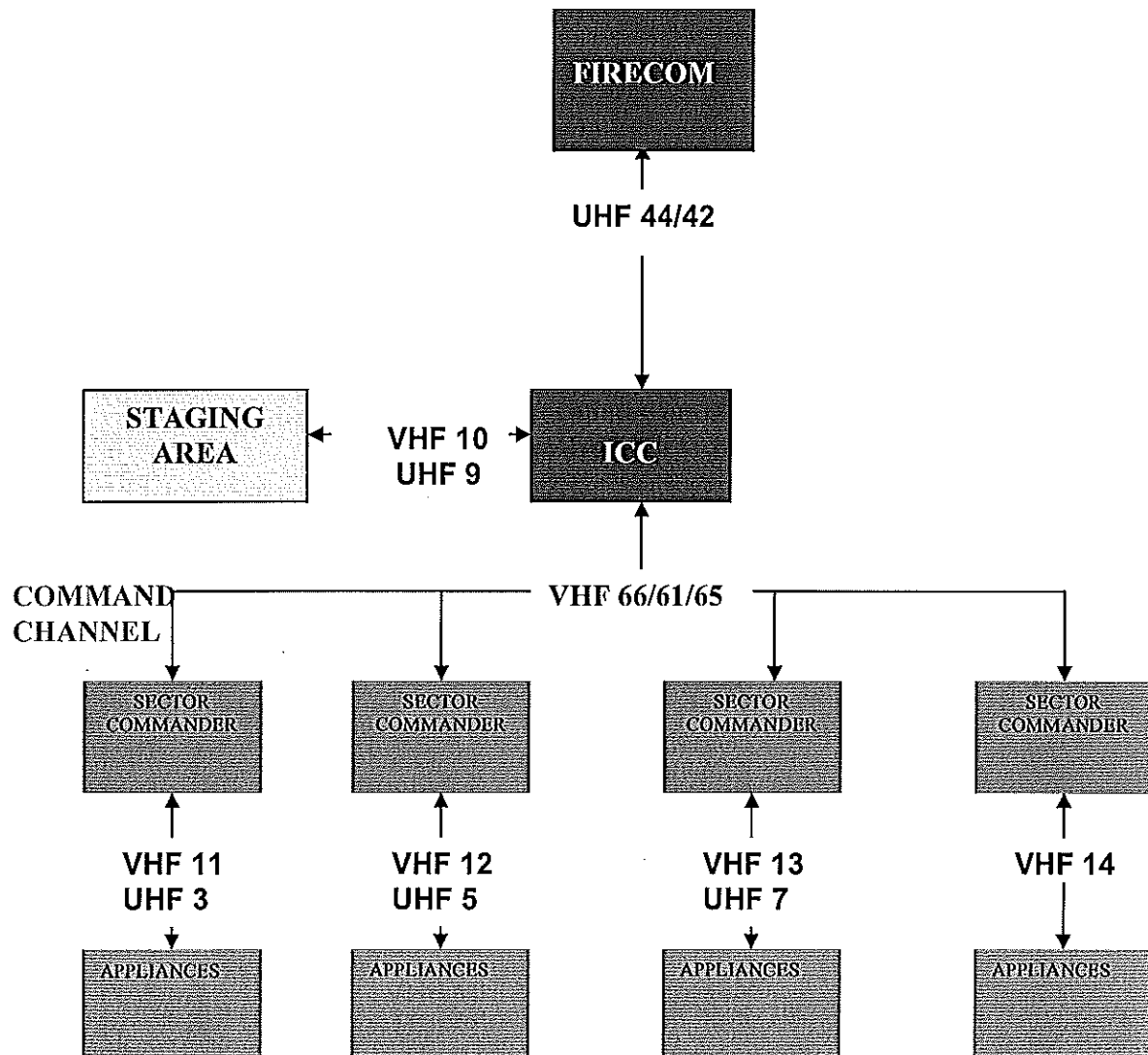
Alternative Command Channels can be used for Fireground communications if not used for command

Rosalie, Crowsnest and Pittsworth  
Group Rural Fire Brigades.  
Cambooya Rural Fire Brigade

Toowoomba (stations 11 and 12,  
Highfields, Pittsworth and Oakey  
Urban stations



Local Wildfire Fireground Communications Plan  
South Western Region – Warwick ICC



**Command Channels**

VHF 66 Braeside Repeater

VHF 61 Karara Repeater

VHF 65 Killarney Repeater

**Alternative Command Channels**

Forestry VHF 113 Cunningham Range

Forestry VHF 112 Karara

Forestry VHF 117 Karara

**Alternative Fireground Channels**

VHF 15, VHF 16, VHF 17, VHF 18

VHF 19, VHF 20, VHF 21, VHF 22

Portable UHF Fireground repeater

channels 2, 4, 6 or 8 (simplex channels 1, 3, 5 or 7 cannot be used if these repeater channels are utilised)

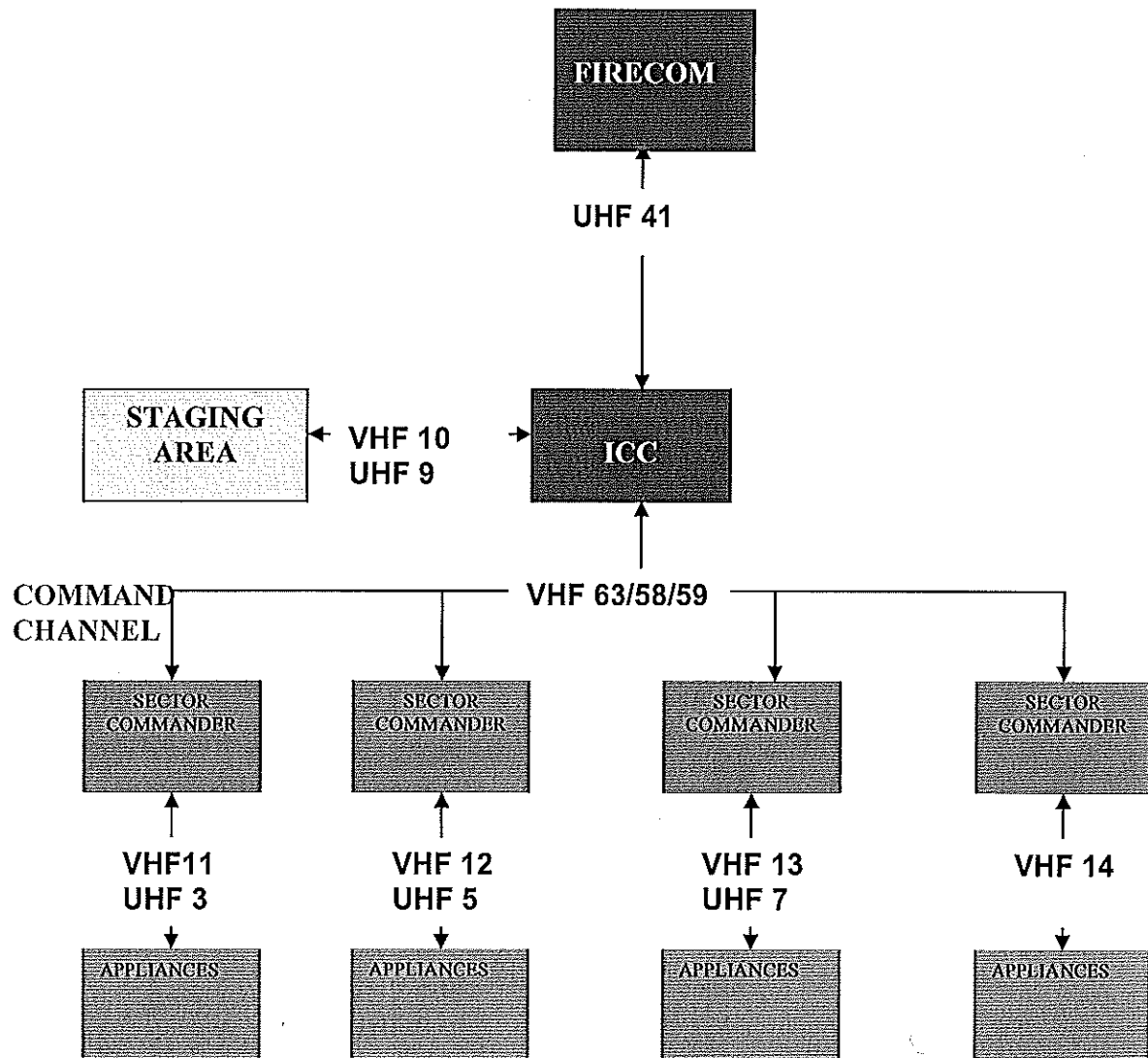
Alternative Command Channels can be used for Fireground communications if not used for command.

**Warwick Group Rural Fire Brigades**

Warwick, Allora, Clifton, Killarney  
and Inglewood Urban stations



**Local Wildfire Fireground Communications Plan  
South Western Region – Stanthorpe ICC**



**Command Channels**

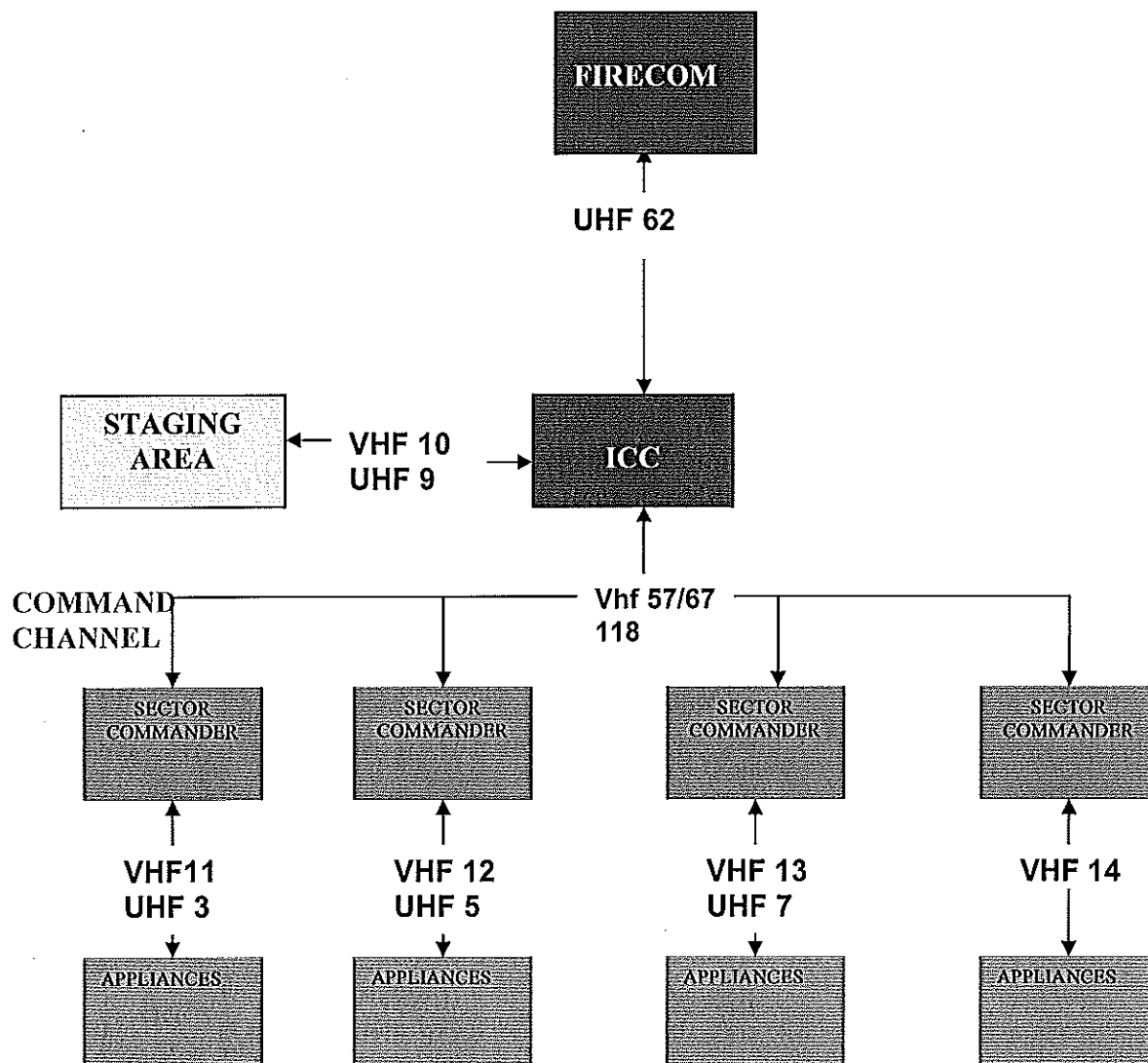
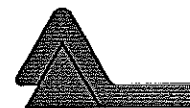
VHF 63 Amiens Repeater  
VHF 58 Christie's Target Repeater  
VHF 59 Mt Dillon Repeater  
**Alternative Command Channels**  
Forestry VHF 111 Passchendale  
QPWS VHF 110 Christie's Target  
**Alternative Fireground Channels**  
VHF 15, VHF 16, VHF 17, VHF 18  
VHF 19, VHF 20, VHF 21, VHF 22  
Portable UHF Fireground repeater  
channels 2, 4, 6 or 8 (**simplex channels 1, 3, 5 or 7 cannot be used if these repeater channels are utilised**)  
Alternative Command Channels can be used for Fireground communications if not used for command.

**Stanthorpe Group Rural Fire Brigades**

Stanthorpe, Warwick and Wallangarra Urban stations



**Local Wildfire Fireground Communications Plan  
South Western Region – Millmerran ICC**



**Command Channels**

VHF 57 Captains Mountain Repeater

VHF 67 Pittsworth

**Alternative Command Channels**

Forestry VHF 118 Western Creek

**Alternative Fireground Channels**

VHF 15, VHF 16, VHF 17, VHF 18

VHF 19, VHF 20, VHF 21, VHF 22

Portable UHF Fireground repeater channels 2, 4, 6 or 8 (simplex channels 1, 3, 5 or 7 cannot be used if these repeater channels are utilised)

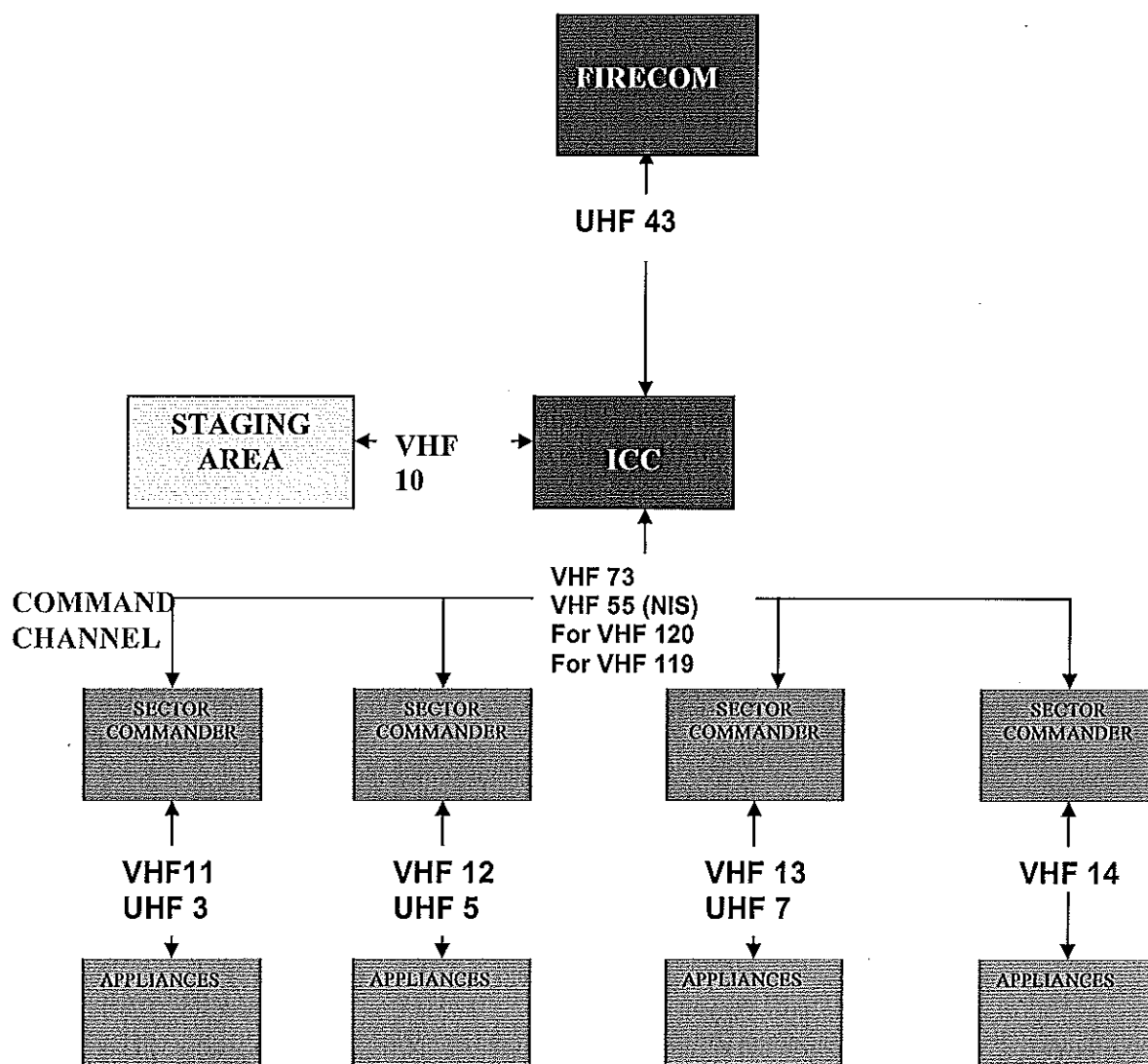
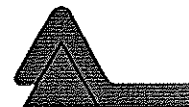
Alternative Command Channels can be used for Fireground communications if not used for command.

**Millmerran Rural Residential Rural Fire Brigades.**

**Millmerran and Pittsworth urban brigades**



**Local Wildfire Fireground Communications Plan  
South Western Region – Dalby ICC**



**Command Channels**

VHF 55 Kumbarilla Repeater (NIS)

VHF 73 Bunya Mountains (NIS)

For VHF 120 Bunya Mountains

For VHF 119 Kumbarilla

**Alternative Command Channels**

As above

**Alternative Fireground Channels**

VHF 15, VHF 16, VHF 17, VHF 18

VHF 19, VHF 20, VHF 21, VHF 22

Portable UHF Fireground repeater

channels 2, 4, 6 or 8 (simplex channels

1, 3, 5 or 7 cannot be used if these

repeater channels are utilised)

Alternative Command Channels can be

used for Fireground communications if

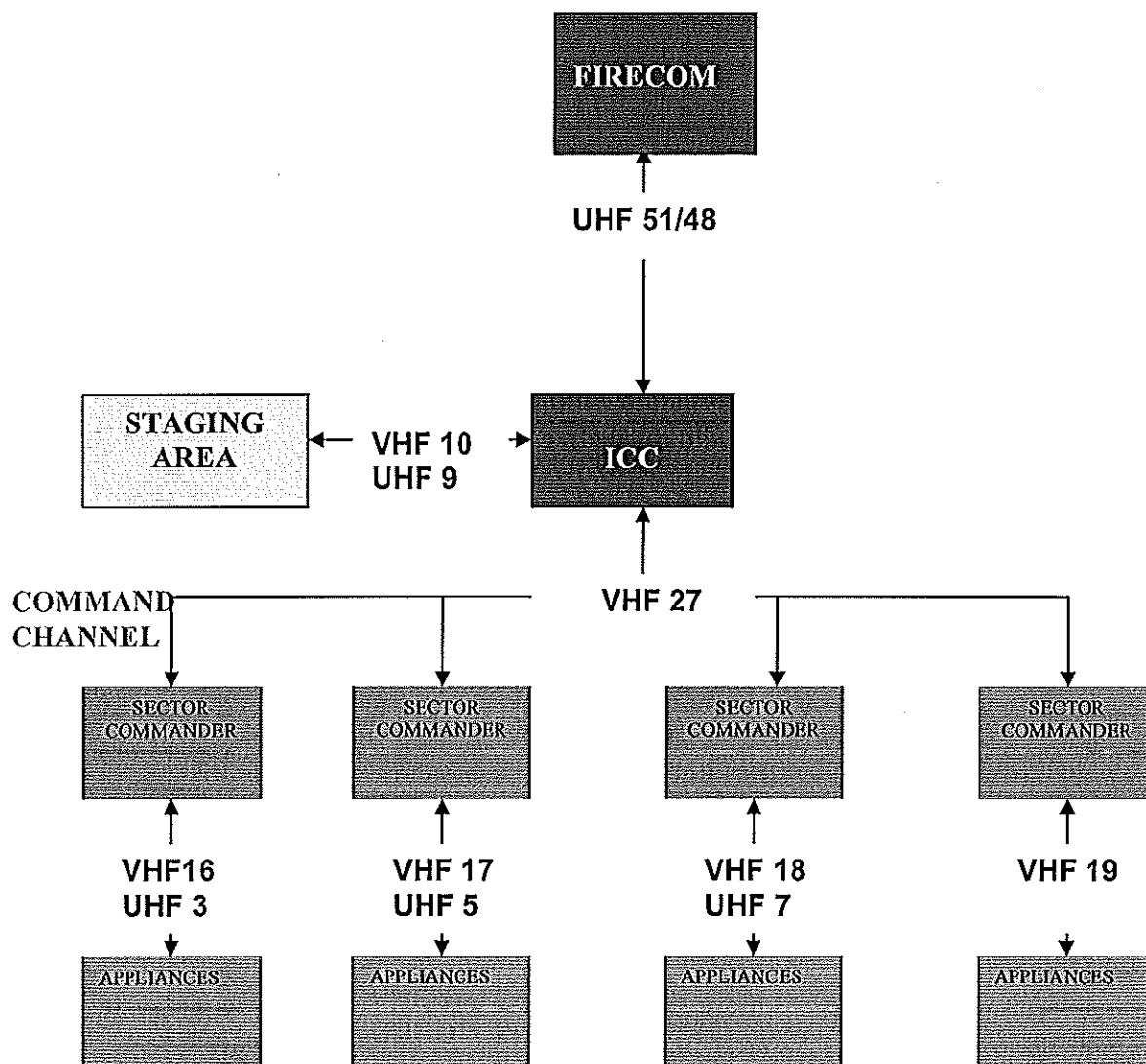
not used for command.

**Wilkie Creek, The Ridge, Bell  
Centre, Kaimkillenbun, Warra and  
Tara Blocks Rural Fire Brigades.**

**Dalby, Jandowae, Chinchilla and  
Cecil Plains urban brigades**



**Local Wildfire Fireground Communications Plan  
South Western Region – (Wieambilla South ICC)  
TARA**



**Command Channels**

VHF 27 Bennett Repeater

**Alternative Command Channels**

Kumbarilla Forestry VHF 119

Western Creek Forestry VHF 118

**Alternative Fireground Channels**

VHF 11, VHF 12, VHF 13, VHF 14

VHF 15, VHF 20, VHF 21, VHF 22

Portable UHF Fireground repeater channels 2, 4, 6 or 8 (simplex channels 1, 3, 5 or 7 cannot be used if these repeater channels are utilised)

Alternative Command Channels can be used for Fireground communications if not used for command.

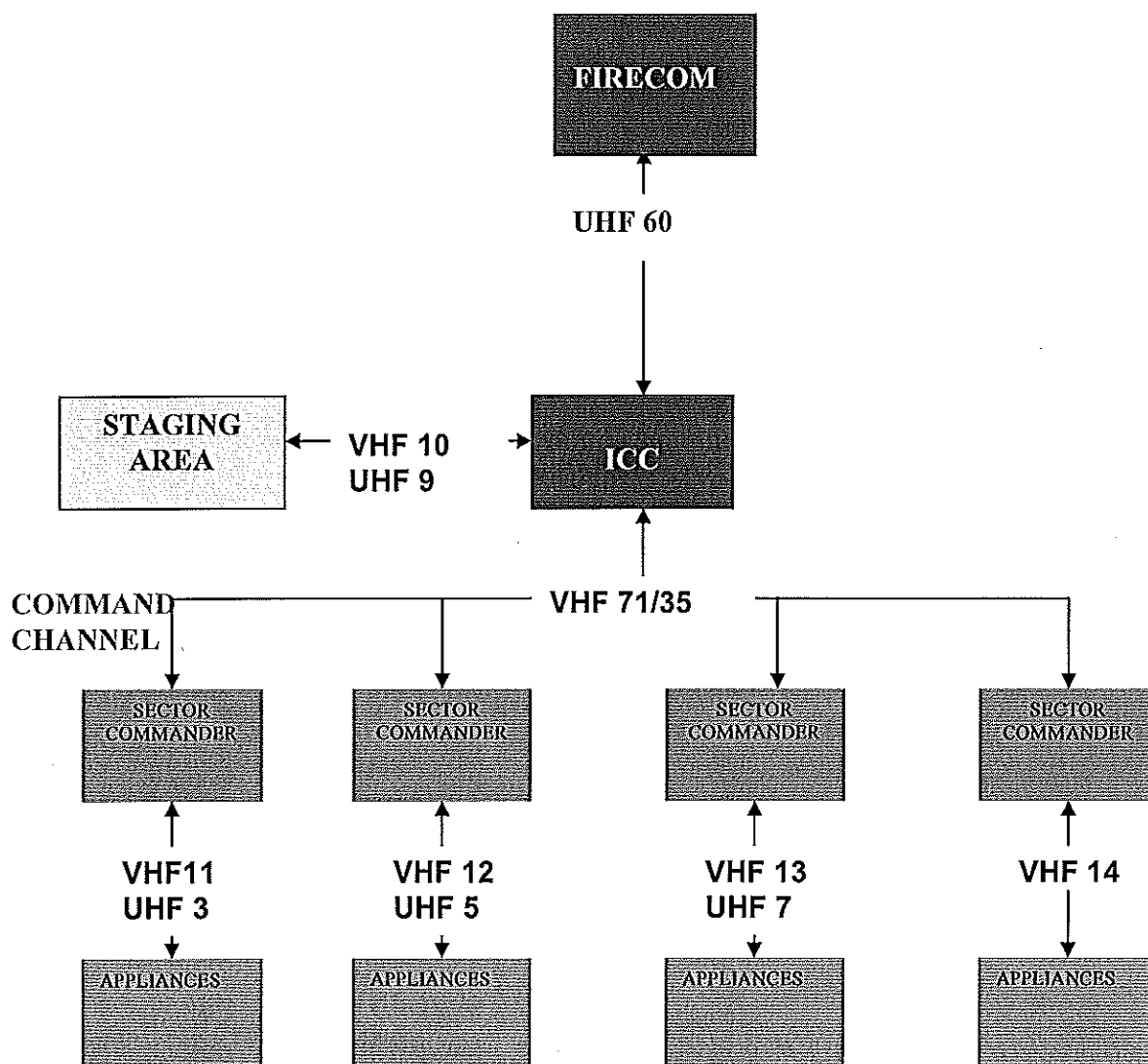
**Tara Rural Fire Brigades**

Weranga Goranba Bennett,  
Wieambilla South, Tolmah, Kogan  
and Tara and Chinchilla Urban  
Stations





**Local Wildfire Fireground Communications Plan  
South Western Region – Crowsnest ICC**



**Command Channels**

VHF 71 Anduramba Repeater

VHF 35 Perseverance Repeater

**Alternative Command Channels**

Forestry VHF 114 Pechey

Forestry VHF 123 Pechey

**Alternative Fireground Channels**

VHF 15, VHF 16, VHF 17, VHF 18

VHF 19, VHF 20, VHF 21, VHF 22

Portable UHF Fireground repeater  
channels 2, 4, 6 or 8 (simplex channels

1, 3, 5 or 7 cannot be used if these  
repeater channels are utilised)

Alternative Command Channels can be  
used for Fireground communications if  
not used for command.

**Rosalie and Crowsnest Group Rural  
Fire Brigades.**

Toowoomba (stations 11 and 12),  
Highfields, Crowsnest and  
Goombungee Urban stations

### South West Region radio channels and Station Identifiers

Area / Stations		UHF	VHF	Rpeat Location	Forestry
Area 1		Vote			
Toowoomba		82			
Kitchener st	11	46,61	69	Picnic Point	
Anzac Av	12	46,61	69	Picnic Point	
Pittsworth	13	46,61	67	Pittsworth	
Oakey	14	46,61	67	Pittsworth	114&123 Pechey
Goombungee	15	60	67	Pittsworth	114&123 Pechey
Crows Nest	16	60	71	Anduramba	114&123 Pechey
Highfields	17	46,61	69	Picnic Point	114&123 Pechey
Toowoomba East			35	Mt Perseverance	
Toowoomba East			39	Mt Glorious	122 Mt Glorious
Area 2 Warwick		Vote			
		83			
Warwick	21	42	66	Braeside	113 C'ham Range
Warwick			65	Killarney	
Warwick			61	Karara	112&117 Karara
Clifton	22	44	67	Pittsworth	
Allora	23	44			113 C'ham Range
Killarney	24	42	66	Braeside	113 C'ham Range
Stanthorpe	25	41	59	Mt Dillon	111 P'daele
Stanthorpe			63	Ameins	
Wallangarra	26	40	58	Christies Target	110 C' target
Inglewood	27	54			115 Inglewood

### South West Region radio channels and Station Identifiers

Area / Stations		UHF		VHF	Rpeat Location	Forestry
Area 3 Dalby						
Cecil Plains	31	43		73	Bunya Mt	118 West Creek
Dalby	32	43		73	Bunya Mt	120 Bunya Mt
				55	Kumbarilla (NIS)	119 Kumbarilla
Tara	33	48/51		27	Bennetts Rd	
Jandowae	34	43		73	Bunya Mt	120 Bunya Mt
Chinchilla	35	43/ 51/52		27	Bennetts Rd	121 Barakula
Miles	36	52				121 Barakula
Meandarra	37			27	Bennetts Rd	
Area 4 Goondiwindi						
Goondiwindi	41	56				
Yelarbon	42					
Texas	43	54/62				
Millmerran	44	62		57	Captains Mt (NIS)	118 West Creek
Dirranbandi	45					
St George	46					
Bollon	47					

### South West Region radio channels and Station Identifiers

Area / Stations		UHF	VHF	Forestry
Area 5 Roma				
Roma	51	54		
Injune	52			
Surat	53			
Wallumbilla	54			
Wandoan	55			
Taroom	56			
Dulacca	57			
Area 6 Charleville				
Charleville	61	54		
Quilpie	62			
Augathella	63			
Mitchell	64	254		
Cunnamulla	65			
Morven	66			
Mungallala	67			

