

# TENNYSON REACH | FLOODING DOCUMENTATION | 14 JANUARY 2011

## 1.0 SALES OFFICE

### 1.1 Car Park Entrance



**Figure:** View from King Arthur Terrace



**Figure:** West of car park



**Figure:** West of car park





**Figure:** Path from car park to sales office front door



**Figure:** West of Sales Office towards river



**Figure:** East of Sales Office towards the river



## 1.2 Debris Under the Sales Office



**Figure:** Debris includes bins, building materials and pallets.



**Figure:** More debris on the northern area under the sales office



**Figure:** More debris and the mud appears to be a few inches deep

### 1.3 Debris along River in Front of Sales Office



**Figure:** View north toward the river and left of the sales office



## 1.4 Water Level Marks



**Figure:** View east of the office showing the water line, which appears to be level with the balcony.



**Figure:** Close up of this water line





**Figure:** View from stairs on the eastern side of the sales office that shows the water line below the door



**Figure:** View on eastern side of entrance showing the water line



**Figure:** Close up of this water line



## 2.0 EXTERNAL AREAS

### 2.1 King Arthur Terrace



**Figure:** View facing west to the Animal Research Institute



**Figure:** View west of path along King Arthur Tce



**Figure:** View north along King Arthur Tce and open space east of Softstone



**Figure:** A close up of the previous figure





**Figure:** View West along King Arthur Tce

### 3.0 BODY CORPORATE AREAS

#### 3.1 Basement



**Figure:** Basement Entrance



**Figure:** Basement Entrance



### 3.2 Parkland



**Figure:** View of Stage 3 hoarding showing the water line



**Figure:** Close up of previous image



**Figure:** View of ramp to parkland and water line of hoarding



**Figure:** View towards river showing hoarding and parkland stairs





**Figure:** View of parkland from stairs facing the river



**Figure:** View of parkland facing east towards Lushington



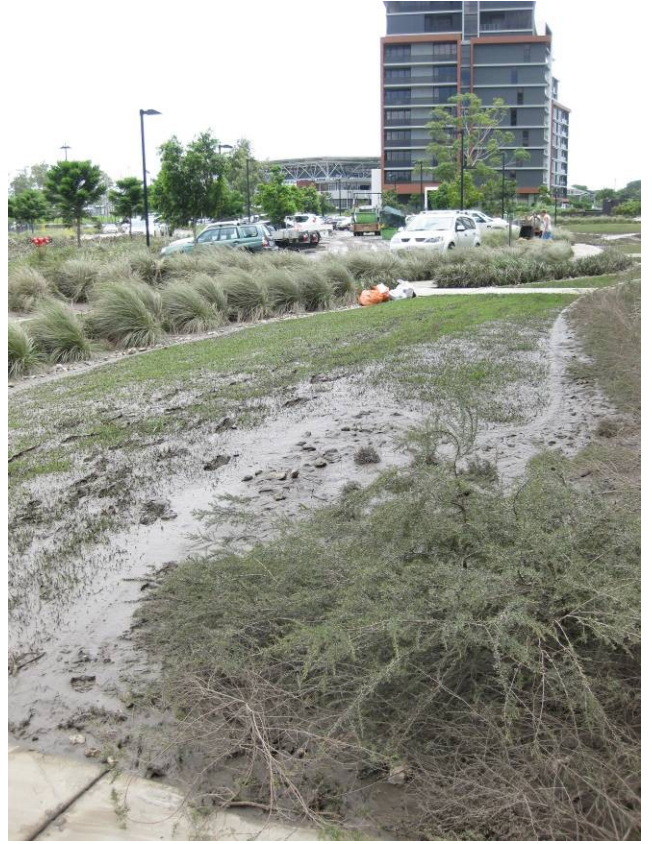


**Figure:** View of parkland facing east towards Lushington



**Figure:** View facing south towards the State Tennis Centre

### 3.3 Visitor Car Park



**Figure:** View west towards the visitor car park and Farringford



### 3.4 Common Areas around Farringford, Lushington and Softstone



**Figure:** View facing west between Farringford and Lushington



**Figure:** View facing south from Softstone entrance





**Figure:** View facing east from Lot 3301 showing King Arthur Tce and path



**Figure:** View from Lot 3301 towards King Arthur Tce





**Figure:** View from Lot 3301 towards the river and path to the east



**Figure:** View of path in front of Lot 3301 along the river

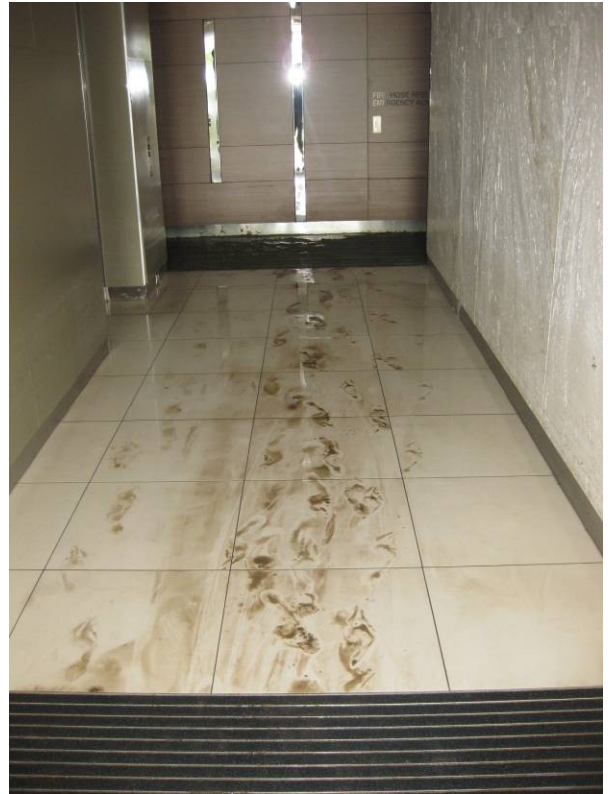


**Figure:** Pool in front of Farringford



## TENNYSON REACH | FLOODING DOCUMENTATION | 14 JANUARY 2011

### 4.0 LOT 3301



**Figure:** Entrance to Softstone and the Lobby



**Figure:** View from Lot 3301 door entrance and view looking back at the door

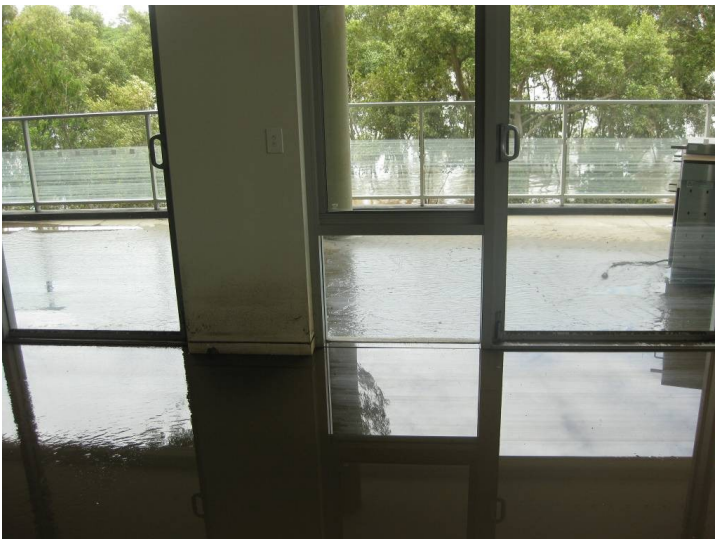


**Figure:** Living Room facing west towards the river





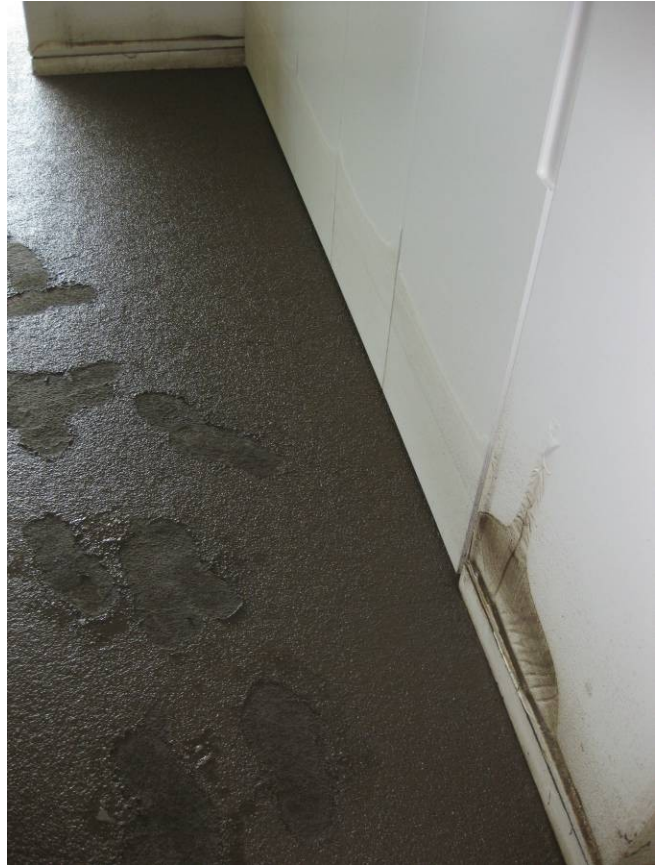
**Figure:** Living Room facing east



**Figure:** Living Room and Balcony



**Figure:** BBQ on balcony



**Figure:** Main Bedroom





**Figure:** Main ensuite showing mud in bath and toilet



**Figure:** View of kitchen





**Figure:** View of kitchen pantry showing warping of timber veneer



**Figure:** View of kitchen wall and pantry showing damage to plasterboard walls



**Figure:** View of kitchen wall that connects to balcony



**Figure:** View of room adjoining balcony